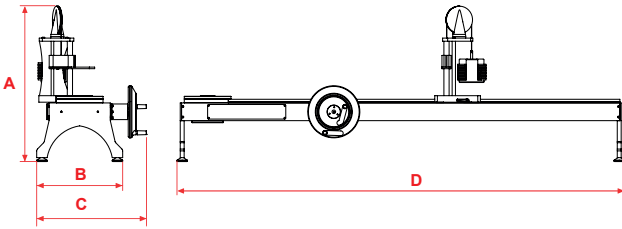




Manuel Tork Anahtarı Kalibrasyon Tezgahtarı

Torque Wrench Calibration Fixture

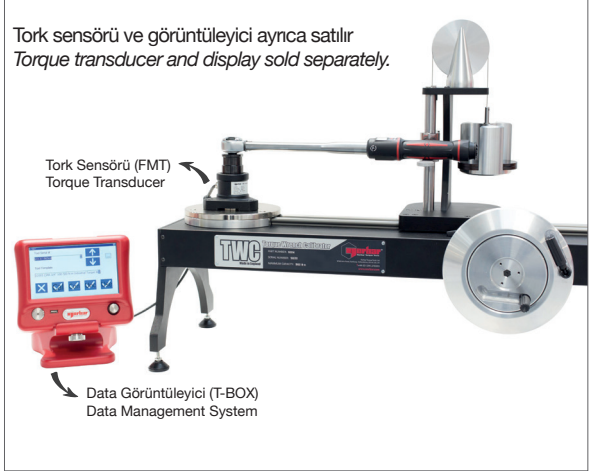


- » 0 - 1.500 N.m arası manuel tork anahtarı kalibrasyon aralığı.
- » Uyumlu standartlar: ISO 6789:2017, BSEN 26789:2003, GGG-W-686.
- » FMT ve Static Tork sensörleriyle çalışır, sensörler ayrıca satın alınır.
- » Tork sensörleri Class1, $\pm 0,5$ ölçüm hassasiyetine sahiptir.
- » T-BOX, TST, PRO-TEST görüntüleme cihazlarına uygundur.
- » Kalibre edilebilir torkmetre boyları 135 - 1.500 mm arasındadır.
- » İki ayrı redüktör ile farklı hızlarda çalışma imkanı sunar.
- » Denge ağırlıkları ile torsiyon harici kuvvetler ölçümleri etkilemez.
- » Tezghah ve tork sensörleri bir bütün olarak kalibre edilir.

- » Torque measurement capability up to 1.500 N.m.
- » Standards: ISO 6789:2017, BSEN 26789:2003, GGG-W-686.
- » Works with Flange Mounted Transducers (FMT), Static Transducers.
- » Torque transducers has $\pm 0.5\%$ torque measurement accuracy.
- » Suitable for T-BOX, TST and Pro-Test torque displays.
- » Usable torque wrenches has a length of 135 - 1.500 mm.
- » Two speed gearbox designed for a sufficient balance of speed and control.
- » Counter Balancer is designed to allow the tool to level to reduce parasitic loads.
- » Torque fixture, torque display and transducers calibrated as a whole.

Teknik Detaylar Technical Details	Birimler Units	TWC 400	TWC 1500
Parça / Part No.	#	60311	60314
Maks. Tork / Max. Torque	N.m	0 - 400	0 - 1.500
Maks. Tork / Max. Torque	lbf.ft	0 - 295	0 - 1.100
Anahtar Uzunluğu / Wrench Length	mm	135 - 750	135 - 1.500
Konumlandırma / Orientation	#	Yatay / Horizontal	Yatay / Horizontal
A	mm	596	596
B	mm	330	330
C	mm	421	421
D	mm	1.035	1.785
Ağırlık / Weight	Kg	35	40

Tork sensörü ve görüntüleyici ayrıca satılır
Torque transducer and display sold separately.



Tork Sensörü (FMT)
Torque Transducer

Data Görüntüleyici (T-BOX)
Data Management System

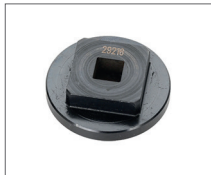
Opsiyonel Aksesuarlar / Optional Accessories



Part No : 29214
1" to 3/4" Adapter



Part No : 29215
1" to 1/2" Adapter



Part No : 29216
1" to 3/8" Adapter



Part No : 29217
1" to 1/4" Adapter



Part No : 60318
Static Transducer Support Kit



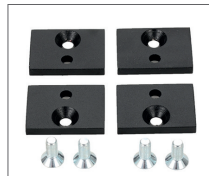
Part No : 60322
Quick Release FMT Kit



Part No : 60323
Pro-Test & Static Torque
Adapter Kit



Part No : 60324
Hexagon Adapter Kit



Part No : 60326
Bench Mounting Kit



Part No : 60327
FMT 25 Adapter Kit



Part No : 60319
Short Length Reaction Post