

## ALUMINIUM DOUBLE ACTING CYLINDERS



### LARZEP advantages

- Capacity from 50 to 200 Tn, stroke up to 300 mm.
- Made out of high strength aluminium alloy.
- All aluminium parts are treated to improve resistance and extend working life.
- Lightweight. Over 40% weight reduction when compared with steel equivalent.
- Fitted with steel base plate for wear resistance.
- Internal safety valve to prevent accidental over-pressure.
- Not suitable for high cycle applications



Flow Control Valves

Page. 110

Carefully read and understand the safety instructions.



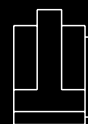
Double Acting Hand Pumps, X.

Page. 80

Larzep designs and manufactures special cylinders and fixing systems, upon request.



ALUMINIUM D/A CYLINDERS



DDA

50-200 Tn.

700 bar

CYLINDERS



Step by step aluminium cylinders.



Double Acting High Tonnage Cylinders, DDR.

Page. 68



Double Acting Aluminium Cylinders, Hollow Piston, DAH.

Page. 66



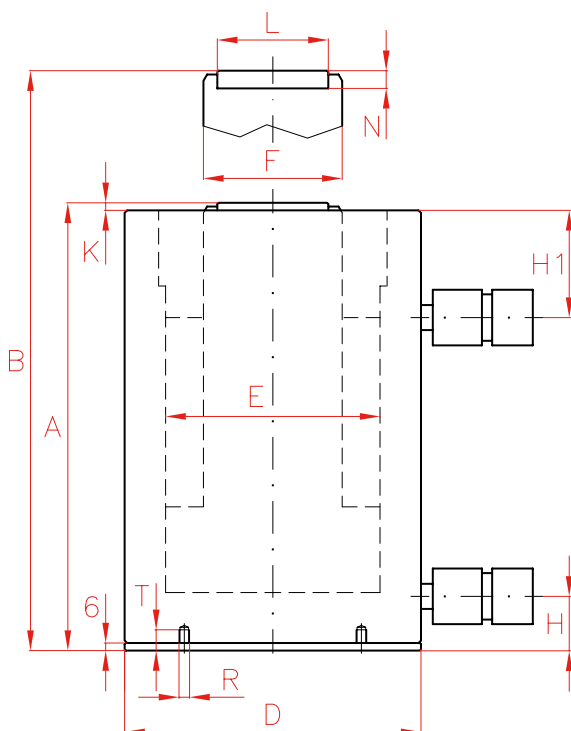
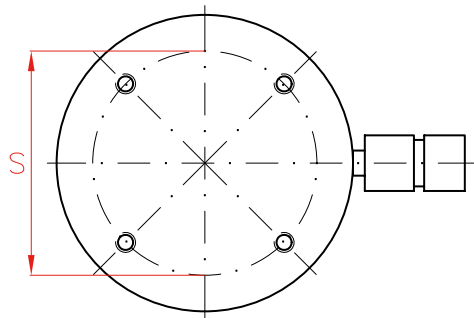
Powerpacks.

Page. 88



Air Hydraulic Pumps, Z.

Page. 82



Capacity	Stroke	Model	Capacity (kN)		Oil Cap.	A
			Push	Pull		
50	50	DDA05005	487	92	354	198
	100	DDA05010	487	92	709	248
	150	DDA05015	487	92	1.063	298
	200	DDA05020	487	92	1.418	348
	250	DDA05025	487	92	1.772	398
	300	DDA05030	487	92	2.126	448
75	50	DDA07505	713	137	520	215
	100	DDA07510	713	137	1.039	265
	150	DDA07515	713	137	1.558	315
	200	DDA07520	713	137	2.077	365
	250	DDA07525	713	137	2.597	415
	300	DDA07530	713	137	3.116	465
100	50	DDA10005	911	130	664	230
	100	DDA10010	911	130	1.327	280
	150	DDA10015	911	130	1.991	330
	200	DDA10020	911	130	2.655	380
	250	DDA10025	911	130	3.318	430
	300	DDA10030	911	130	3.982	480
140	50	DDA14005	1.380	364	1.135	255
	100	DDA14010	1.380	364	2.270	305
	150	DDA14015	1.380	364	3.405	355
	200	DDA14020	1.380	364	4.539	405
	250	DDA14025	1.380	364	5.675	455
	300	DDA14030	1.380	364	6.809	505
200	50	DDA20005	1.946	483	1.418	259
	100	DDA20010	1.946	483	2.835	309
	150	DDA20015	1.946	483	4.253	359
	200	DDA20020	1.946	483	5.670	409
	250	DDA20025	1.946	483	7.088	459
	300	DDA20030	1.946	483	8.506	509



Quick Couplers.

Page. 108

Carefully read and understand the safety instructions.



Optional Tilting Saddle.

Page. 112

	B	D	E	F	H	H1	K	L	N	S	R	T	Area	Weight	Model	With tilting saddle	
	mm	mm	mm	mm	mm	mm		mm	mm	mm		mm	cm <sup>2</sup>	kg	LARZEP	A	Model
	248	135	95	75	26	60	7	61	12	115	M6	19	71	8,0	<b>DDA05005</b>	225	AZ0402
	348	135	95	75	26	60	7	61	12	115	M6	19	71	9,7	<b>DDA05010</b>	275	AZ0402
	448	135	95	75	26	60	7	61	12	115	M6	19	71	11,3	<b>DDA05015</b>	325	AZ0402
	548	135	95	75	26	60	7	61	12	115	M6	19	71	12,9	<b>DDA05020</b>	375	AZ0402
	648	135	95	75	26	60	7	61	12	115	M6	19	71	14,6	<b>DDA05025</b>	425	AZ0402
	748	135	95	75	26	60	7	61	12	115	M6	19	71	16,2	<b>DDA05030</b>	475	AZ0402
	265	160	115	90	32	70	6	61	12	140	M6	19	104	11,8	<b>DDA07505</b>	242	AZ0402
	365	160	115	90	32	70	6	61	12	140	M6	19	104	14,0	<b>DDA07510</b>	292	AZ0402
	465	160	115	90	32	70	6	61	12	140	M6	19	104	16,3	<b>DDA07515</b>	342	AZ0402
	565	160	115	90	32	70	6	61	12	140	M6	19	104	18,6	<b>DDA07520</b>	392	AZ0402
	665	160	115	90	32	70	6	61	12	140	M6	19	104	20,8	<b>DDA07525</b>	442	AZ0402
	765	160	115	90	32	70	6	61	12	140	M6	19	104	23,1	<b>DDA07530</b>	492	AZ0402
	280	180	130	110	32	70	5	88	14	160	M6	19	133	16,1	<b>DDA10005</b>	263	AZ0404
	380	180	130	110	32	70	5	88	14	160	M6	19	133	19,2	<b>DDA10010</b>	313	AZ0404
	480	180	130	110	32	70	5	88	14	160	M6	19	133	22,2	<b>DDA10015</b>	363	AZ0404
	580	180	130	110	32	70	5	88	14	160	M6	19	133	25,3	<b>DDA10020</b>	413	AZ0404
	680	180	130	110	32	70	5	88	14	160	M6	19	133	28,3	<b>DDA10025</b>	463	AZ0404
	780	180	130	110	32	70	5	88	14	160	M6	19	133	31,3	<b>DDA10030</b>	513	AZ0404
	305	225	160	110	43	85	6	88	14	200	M6	19	201	28,2	<b>DDA14005</b>	288	AZ0404
	405	225	160	110	43	85	6	88	14	200	M6	19	201	32,3	<b>DDA14010</b>	338	AZ0404
	505	225	160	110	43	85	6	88	14	200	M6	19	201	36,4	<b>DDA14015</b>	388	AZ0404
	605	225	160	110	43	85	6	88	14	200	M6	19	201	40,5	<b>DDA14020</b>	438	AZ0404
	705	225	160	110	43	85	6	88	14	200	M6	19	201	44,6	<b>DDA14025</b>	488	AZ0404
	805	225	160	110	43	85	6	88	14	200	M6	19	201	48,7	<b>DDA14030</b>	538	AZ0404
	309	265	190	140	51	85	6	111	15	225	M6	19	284	40,0	<b>DDA20005</b>	296	AZ0405
	409	265	190	140	51	85	6	111	15	225	M6	19	284	45,9	<b>DDA20010</b>	346	AZ0405
	509	265	190	140	51	85	6	111	15	225	M6	19	284	51,8	<b>DDA20015</b>	396	AZ0405
	609	265	190	140	51	85	6	111	15	225	M6	19	284	57,8	<b>DDA20020</b>	446	AZ0405
	709	265	190	140	51	85	6	111	15	225	M6	19	284	63,7	<b>DDA20025</b>	496	AZ0405
	809	265	190	140	51	85	6	111	15	225	M6	19	284	69,6	<b>DDA20030</b>	546	AZ0405