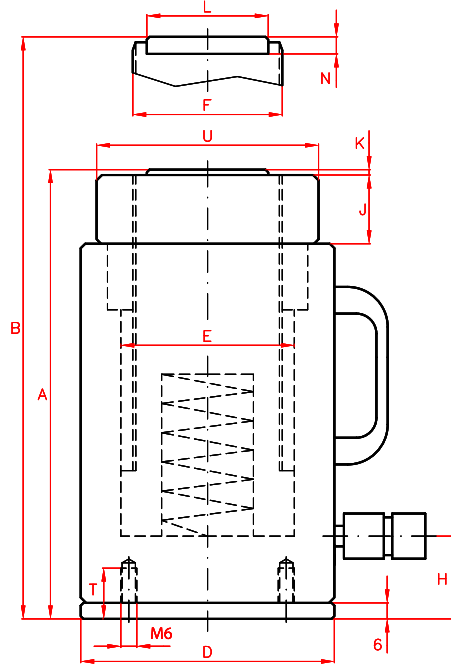


LARZEP
HYDRAULIC

SATM Serisi Alüminyum Kilit Somunlu Hidrolik Silindirler
SATM Single Acting Spring Return Aluminum Lock Nut Cylinders



- 200 Ton** 30 tondan 200 tona kadar hidrolik silindir modelleri
- Q** Maksimum 700 bar çalışma basıncı
- 🔧** 50 mm'den 300 mm'ye kadar stroke boyu seçeneği
- 🌀** Tek etkili, yay geri dönüşlü hidrolik sistem
- ⚠️** Strok aşım valfi ve kırmızı uyarı bandı standart
- 🔒** Ekstra %50 yük dayanımlı mekanik kilit kapasitesi
- 🔧** Değiştirilebilir, opsiyonel sertleştirilmiş başlıklar
- Al** Kaliteli alüminyumdan imal dayanıklı silindir gövdesi

Kapasite Capacity		Model	Strok Stroke	Etki Alanı Effect Area	Yağ Hacmi Oil Cap.	A	B	D	E	F	H	J	K	L	N	T	U	Ağırlık Weight
Ton	kN	LARZEP	mm	cm ²	cm ³	mm	mm	mm	mm	mm	mm	mm	mm	mm	mm	mm	mm	kg
30	303	SATM03005	50	44	221	204	254	105	75	Tr 60x4	24	35	3	45	11	19	95	4.9
30	303	SATM03010	100	44	442	254	354	105	75	Tr 60x4	24	35	3	45	11	19	95	5.9
30	303	SATM03015	150	44	663	304	454	105	75	Tr 60x4	24	35	3	45	11	19	95	6.9
30	303	SATM03020	200	44	884	354	554	105	75	Tr 60x4	24	35	3	45	11	19	95	7.9
30	303	SATM03025	250	44	1.104	404	654	105	75	Tr 60x4	24	35	3	45	11	19	95	8.9
30	303	SATM03030	300	44	1.325	454	754	105	75	Tr 60x4	24	35	3	45	11	19	95	9.8
50	487	SATM05005	50	71	355	216	266	135	95	Tr 80x4	26	40	3	61	12	19	125	9.4
50	487	SATM05010	100	71	709	266	366	135	95	Tr 80x4	26	40	3	61	12	19	125	11.1
50	487	SATM05015	150	71	1.063	316	466	135	95	Tr 80x4	26	40	3	61	12	19	125	12.8
50	487	SATM05020	200	71	1.418	366	566	135	95	Tr 80x4	26	40	3	61	12	19	125	14.6
50	487	SATM05025	250	71	1.772	416	666	135	95	Tr 80x4	26	40	3	61	12	19	125	16.3
50	487	SATM05030	300	71	2.127	466	766	135	95	Tr 80x4	26	40	3	61	12	19	125	18
100	911	SATM10005	50	133	663	258	308	180	130	Tr 110x4	32	50	3	88	14	19	170	18
100	911	SATM10010	100	133	1.326	308	408	180	130	Tr 110x4	32	50	3	88	14	19	170	21
100	911	SATM10015	150	133	1.989	358	508	180	130	Tr 110x4	32	50	3	88	14	19	170	24.1
100	911	SATM10020	200	133	2.652	408	608	180	130	Tr 110x4	32	50	3	88	14	19	170	27.1
100	911	SATM10025	250	133	3.315	458	708	180	130	Tr 110x4	32	50	3	88	14	19	170	30.1
100	911	SATM10030	300	133	3.978	508	808	180	130	Tr 110x4	32	50	3	88	14	19	170	33.2
140	1.380	SATM14005	50	201	1.005	282	332	225	160	Tr 140x6	43	60	3	88	14	19	210	32.6
140	1.380	SATM14010	100	201	2.011	332	432	225	160	Tr 140x6	43	60	3	88	14	19	210	37.5
140	1.380	SATM14015	150	201	3.016	382	532	225	160	Tr 140x6	43	60	3	88	14	19	210	42.4
140	1.380	SATM14020	200	201	4.021	432	632	225	160	Tr 140x6	43	60	3	88	14	19	210	47.4
140	1.380	SATM14025	250	201	5.027	482	732	225	160	Tr 140x6	43	60	3	88	14	19	210	52.3
140	1.380	SATM14030	300	201	6.032	532	832	225	160	Tr 140x6	43	60	3	88	14	19	210	57.2
200	1.946	SATM20005	50	284	1.418	296	346	265	190	Tr 170x6	51	65	3	111	15	19	250	52.7
200	1.946	SATM20010	100	284	2.835	346	446	265	190	Tr 170x6	51	65	3	111	15	19	250	58.6
200	1.946	SATM20015	150	284	4.253	396	546	265	190	Tr 170x6	51	65	3	111	15	19	250	64.5
200	1.946	SATM20020	200	284	5.760	446	646	265	190	Tr 170x6	51	65	3	111	15	19	250	70.5
200	1.946	SATM20025	250	284	7.088	496	746	265	190	Tr 170x6	51	65	3	111	15	19	250	76.4
200	1.946	SATM20030	300	284	8.506	546	846	265	190	Tr 170x6	51	65	3	111	15	19	250	82.3