



**OFFICINA MECCANICA**

**BINDA S.r.l.**

**HAND PUMPS FOR ALL PURPOSES**

**EXPORT PRICE LIST CATALOGUE 2015**



italiano

Pompe manuali  
Gruppi pompanti di travaso  
Pompe di prova idraulica  
Pompe disostruenti  
Pompe pneumatiche  
Elettro-pompe  
Pompe elettro-pneumatiche

Moto-pompe  
Conta - litri meccanici e digitali  
Pistole di erogazione  
Valvole di fondo e uni-direzionali  
Visualizzatori di passaggio a spia  
Riduttori di pressione per acqua  
Serpentine ammortizzatrici

Hand pumps  
Barrel & drums pump sets  
Test pumps  
Clearing pumps  
Air-operated pumps  
Electric pumps  
Electro-pneumatic pumps

Engine pumps  
Mechanical & digital flow meters  
Trigger nozzles  
One-way & foot valves  
Flow-indicator valves  
Water pressure reducing valves  
Coils

english

deutsch

Handpumpen  
Fasspumpen  
Prüfpumpen  
Reinigungspumpen  
Druckluftpumpen  
Elektropumpen  
Elektro-pneumatische Pumpen  
Motor Pumpen

Mechanische - und Digitale  
Durchflussmesser  
Zapfpistolen  
Rückschlag - und Fussventile  
Durchflussindikatoren  
Wasserdruck-Reduktionsventile  
Spulen

Pompes à main  
Pompes pour fûts et tonneaus  
Pompes d'essais  
Pompes d'évacuation  
Pompes pneumatiques  
Pompes électriques  
Pompes électro - pneumatiques

Pompes motorisées  
Débitmètre - mécanique et digital  
Pistolets  
Clapets et crépines  
Indicateurs de débit  
Réducteurs de pression d'eau  
Serpentins

français

La **pompa a mano** è la macchina semplice più antica nella storia dell'uomo. Un modello, denominato **machina ctesibica** è stato rinvenuto a Bolsena, nei pressi di Roma, nella casa di Liberio Gallo, fondatore di uno dei più importanti **collegia fabrorum**, durante l'Impero Romano. Essa rappresenta il primo tipo di **pompa manuale** prodotta da una società evoluta. Da 2000 anni l'ingegneria ha sviluppato il **know-how** attinente le **pompe**, fino a raggiungere performance di prevalenza, portata, compatibilità e affidabilità elevatissime. La società **BINDA**, proseguendo la tradizionale produzione di **pompe a mano**, iniziata nel **1919**, mirando ad una costante evoluzione tecnologica del prodotto, alla soddisfazione dei bisogni della propria clientela, al rispetto dell'ambiente e garantendo sempre un ottimo rapporto qualità/prezzo dei propri articoli, ha raggiunto la **leadership** mondiale per quanto concerne la gestione dei fluidi per mezzo di **sistemi manuali di pompaggio** offrendo il più completo range di **pompe** ed articoli complementari disponibili sul mercato internazionale. La ditta **BINDA**, certificata **RINA** e fornitrice ufficiale **NATO** garantisce l'elevato standard qualitativo della produzione grazie ai sistemi produttivi e di controllo procedurati secondo le suddette normative militari.

**Hand pumps** are among Man's oldest machines. An example called the **Ctesibice Machine** was discovered in Bolsena near Rome in the house of Liberio Gallo, and dates from the time of the Roman Empire. Gallo himself was founder of one of the most important **Collegia Fabrorum**. The **Ctesibice Machine** is the oldest **manual pump** found in the classical world. In the ensuing 2000 years engineers have improved pump technology, achieving greater flow-rates, suction lift and delivery heads, compatibility with many fluids, improved practicality and safety. **BINDA & Co** whose traditional production of hand pumps dates from **1919** have continuously improved the technology of the product to the satisfaction of their many customers, offering **non polluting environmentally friendly pumps** at excellent prices and are now one of the World's leading manufacturers of **hands pumps**. In fact, a very wide range of **pumps** is now available for great variety of liquids, together with an equally wide of **ancillary equipments**. Conforming to **RINA** (Italian Register of Navy Standards), **BINDA & Co** are also an official supplier to **NATO** and the quality control system carried out by these bodies assure that all products are of very highest quality.

Die **Handpumpe** ist der ältesten Maschinen der Menschheit. Ein Modell, genannt die "**Ctesibice Maschine**", wurde in Bolsena, nahe Rom entwickelt und datiert aus der Zeit des römischen Weltreichs. Liberio Gallo war der Entwickler dieser Maschine und gleichzeitig auch Gründer des bedeutenden "**Collegia Fibrorum**". Die antike "Ctesibe Maschine" ist die älteste bekannte Handpumpe der Welt. In den vergangenen 2000 Jahren haben Ingenieure die Pumpentechnik weiterentwickelt, um größere Durchflussmengen, Saughöhen und Förderdruck zu erreichen. Die Verträglichkeit zu vielen Flüssigkeiten ermöglichte mehr Sicherheit und Vielseitigkeit. **BINDA & Co** ist ein traditioneller Hersteller von Handpumpen seit **1919**. Seit dieser Zeit wurde ständig die Qualität weiterentwickelt, um eine sichere und umweltfreundliche Handhabung zu gewährleisten und um die vielen Kunden mit dieser Qualität zufriedenzustellen. Dieser Qualitätsanspruch und ein hervorragendes Preis-Leistungsverhältnis, haben BINDA zu einem der führenden Handpumpenhersteller der Welt gemacht. Heute ist eine große Auswahl an Handpumpen und Zubehör für eine Vielzahl an Flüssigkeiten lieferbar. In Übereinstimmung mit dem **RINA**, dem italienischen Register für die Marine Standards, ist **BINDA & Co** offizieller Lieferant für die **NATO**. Die Qualitätskontrollen dieser beiden Institutionen, gewährleisten höchste Qualität bei allen BINDA Produkten.

La **pompe à main** est parmi les plus vieilles des machines de l'homme. Une pompe appelée La **Machine De Ctesibice** fut découverte à Bolesena, près Rome, dans la maison de Liberio Gallo à l'époque de l'Empire Romain. Gallo à été lui meme fondateur d'un des plus importants "**Colleges Fabrorum**". La Machine De Ctesibice est la plus vieille pompe à main du monde classique. Depuis 2000 ans, les ingénieurs ont amélioré la technologie de la pompe résultant dans des débits plus grands, de l'aspiration, des pressions de livraison augmentées et une sécurité améliorée. **BINDA SRL**, dont la production de pompes traditionnelles date de **1919**, a continuellement amélioré ses techniques afin de satisfaire de nombreux clients en offrant des pompes écologiques à des prix économiques, est l'un des leaders mondiaux dans la fabrication de la pompe **à main**. En effet **BINDA** offre une des plus grandes gammes de pompes et accessoires pour le traitement des fluides disponibles sur le marché international. Fournisseur de l'**OTAN**, l'excellence des produits est garantie par notre système d'assurance qualité, agréé par les services de l'**OTAN** et **RINA** (registre Italien de la Marine).

## RAL VERS.

3020

GB

Corpo e coperchio: GHISA - Interni: BRONZO.  
 CAST-IRON body and cover - BRONZE internal parts.  
 Korpus und Deckel: GUSSEISEN - Innenteile: BRONZE.  
 Corps et couvercle: FONTE - Mécanisme intérieur: BRONZE.

9006

GL

Corpo e coperchio: GHISA - Interni: LEGA LEGGERA.  
 CAST-IRON body and cover - DIE-CAST ALLOY internal parts.  
 Korpus und Deckel: GUSSEISEN - Innenteile: DRUCKGUSSBESCHICHTUNG.  
 Corps et couvercle: FONTE - Mécanisme intérieur: ALUMINIUM.

1011

B

Corpo e coperchio: BRONZO - Interni: BRONZO.  
 BRONZE body and cover - BRONZE internal parts.  
 Korpus und Deckel: BRONZE- Innenteile: BRONZE.  
 Corps et couvercle: BRONZE - Mécanisme intérieur: BRONZE.

7000

INOX

Corpo e coperchio: ACCIAIO INOX - Interni: DIVERSI SECONDO IL MODELLO.  
 STAINLESS STEEL body and cover - Internal parts ACCORDING TO MODEL SELECTED.  
 Korpus und Deckel: EDELSTAHL - Innenteile JE NACH MODELLAUSFÜHRUNG.  
 Corps et couvercle: ACIER INOXIDABLE - Matériaux du mécanisme intérieur: SELON LE MODELE.

6003

G

Corpo e coperchio: GHISA - Interni: DIVERSI SECONDO IL MODELLO.  
 CAST-IRON body and cover - Internal parts ACCORDING TO MODEL SELECTED.  
 Korpus und Deckel: GUSSEISEN - Innenteile JE NACH MODELLAUSFÜHRUNG.  
 Corps et couvercle: FONTE - Matériaux du mécanisme intérieur: SELON LE MODELE.

9010

ACC

Corpo: ACCIAIO - Interni: DIVERSI SECONDO IL MODELLO.  
 STEEL body - Internal parts ACCORDING TO MODEL SELECTED.  
 Korpus: STAHL - Innenteile JE NACH MODELLAUSFÜHRUNG.  
 Corps et couvercle: ACIER - Matériaux du mécanisme intérieur: SELON LE MODELE.

NATUR

AL

Corpo e cappello: ALLUMINIO - Interni: DIVERSI SECONDO IL MODELLO.  
 DIE-CAST ALLOY body and cap - Internal parts ACCORDING TO MODEL SELECTED.  
 Korpus und Deckel: ALU-DRUCKGUß - Innenteile JE NACH MODELLAUSFÜHRUNG.  
 Corps et couvercle: ALUMINIUM - Matériaux du mécanisme intérieur: SELON LE MODELE.

NATUR

OT

Corpo e cappello: OTTONE - Interni: OTTONE.  
 BRASS body and cap - BRASS internal parts.  
 Korpus und Deckel: BRONZE- Innenteile: BRONZE.  
 Corps et couvercle: LAITON - Mécanisme intérieur: LAITON.

NATUR

P

Corpo: PLASTICA.  
 PLASTIC body (such as PP, PTFE, PVDF, etc.)  
 Korpus: KUNSTSTOFF.  
 Corps: MATIERE PLASTIQUE.

3020

K

Con manico di LEGNO.  
 With WOODEN handle.  
 Mit HOLZGRIFF.  
 Avec levier en BOIS.

1011

AM

ANTI MAGNETICO.  
 ANTI-MAGNETIC.  
 ANTIMAGNETISCH.  
 ANTI- MAGNETIQUE.

1011

AT

A-TOSSICO.  
 NON TOXIC.  
 NICHT TOXISCH.  
 NON TOXIQUE.

5012

BE

Con tenute in FPM (Viton).  
 With FPM (Viton) seals.  
 Mit FPM (Viton) Dichtungen.  
 Avec garnitures en FPM (Viton).

7000

PTFE

Con tenute in PTFE (Teflon).  
 With PTFE (Teflon) seals.  
 Mit PTFE (Teflon) Dichtungen.  
 Avec garnitures en PTFE (Teflon).

Z

Con zanche di ancoraggio regolabili.  
 With adjustable brackets.  
 Justierbare Wandbefästigung.  
 Avec oreille de fixation

## EXCELSIOR - G

**EXCELSIOR PUMP:** Semi-rotary hand pump, self-priming, double acting and reciprocating action. Cast iron body and cover, internal parts made of bronze; according to the versions seals may be NBR (GB) or Viton (GB-be). The maximum delivery head is 25 meters. E00 version without flanges.



Artic.	Vers.	Ø	lt/min	h	kg	€
E00	GB	3/8" - 1/2"	14	7 m	2,2	139,00
E0	GB	1/2"	16	8,5 m	3,1	194,00
E1	GB	3/4"	20	8,5 m	4,3	216,00
E2	GB	1"	30	8,5 m	5,5	268,00
E3	GB	1" 1/4	40	8,5 m	8,3	377,00
E4	GB-K	1" 1/4	55	7 m	15,0	385,00
E5	GB-K	1" 1/2	80	7 m	23,0	388,00
E7	GB-K	2"	105	7 m	32,0	696,00

Artic.	Vers.	Ø	lt/min	h	kg	€
E0	GB-be	1/2"	16	8,5 m	3,1	235,00
E1	GB-be	3/4"	20	8,5 m	4,3	255,00
E2	GB-be	1"	30	8,5 m	5,5	311,00
E3	GB-be	1" 1/4	40	8,5 m	8,3	410,00

## EXCELSIOR – B

**EXCELSIOR PUMP:** Bronze semi-rotary hand pump, self-priming, double acting and reciprocating action. Cast iron body, cover and internal parts made of bronze; according to the versions seals may be NBR (B) or Viton (B-be). The maximum delivery head is 25 meters.



Artic.	Vers.	Ø	lt/min	h	kg	€
E000	B	3/8"	8	7 m	1,7	263,00
E00	B	3/8"	14	7 m	2,6	285,00
E0	B	1/2"	16	8,5 m	3,3	336,00
E1	B	3/4"	20	8,5 m	4,8	412,00
E2	B	1"	30	8,5 m	6,0	476,00
E3	B	1" 1/4	40	8 m	9,0	696,00
E4	B	1" 1/4	55	7 m	11,5	914,00
E5	B	1" 1/2	80	7 m	15,0	1.107,00

Artic.	Vers.	Ø	lt/min	h	kg	€
E0	B-be	1/2"	16	8,5 m	3,3	389,00
E1	B-be	3/4"	20	8,5 m	4,8	458,00
E2	B-be	1"	30	8,5 m	6,0	541,00
E3	B-be	1" 1/4	40	8 m	9,0	757,00

## G.P. EXCELSIOR

**G.P. EXCELSIOR:** Pumping unit complete with EXCELSIOR hand pumps, section tube, bung adaptor, outlet elbow, flexible delivery hose and anti-drip spout.



Artic.	Vers.	Ø	lt/min	lt	kg	€
G.P. E0	GB	1/2"	15	200	6,0	295,00
G.P. E1	GB	3/4"	18	200	7,5	324,00
G.P. E2	GB	1"	27	200	9,0	389,00
G.P. E3	GB	1" 1/4	36	200	13,0	524,00

Artic.	Vers.	Ø	lt/min	lt	kg	€
G.P. E0	GB-be	1/2"	15	200	6,0	332,00
G.P. E1	GB-be	3/4"	18	200	7,5	394,00
G.P. E2	GB-be	1"	27	200	9,0	459,00
G.P. E3	GB-be	1" 1/4	36	200	13,0	574,00

## G.P. DISTRIBUTOR

**G.P. DISTRIBUTOR:** Pumping unit complete with EXCELSIOR hand pump, suction tube, bung adaptor, mechanical flow-meter, flexible delivery hose and manually operated trigger nozzle.



Artic.	Vers.	Ø	lt/min	lt	kg	€
G.P. DISTR0	GB	1/2"	14	200	8,5	630,00
G.P. DISTR1	GB	3/4"	17	200	10,0	648,00
G.P. DISTR2	GB	1"	25	200	11,5	673,00



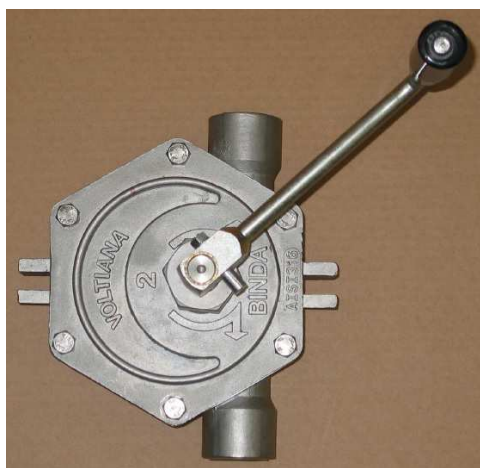
## VOLTIANA



**VOLTIANA PUMP:** Full rotary action hand pump, self-priming, fully reversible, one revolution 360°. Cast iron body.

Artic.	Vers.	Ø	lt/min	h	kg	€
V0	GB	1/2"	24	5 m	2,9	141,00
V1	GB	3/4"	35	5 m	3,4	153,00
V2	GB	1"	46	5 m	4,5	193,00
V2	GL	1"	46	5 m	4,5	166,00

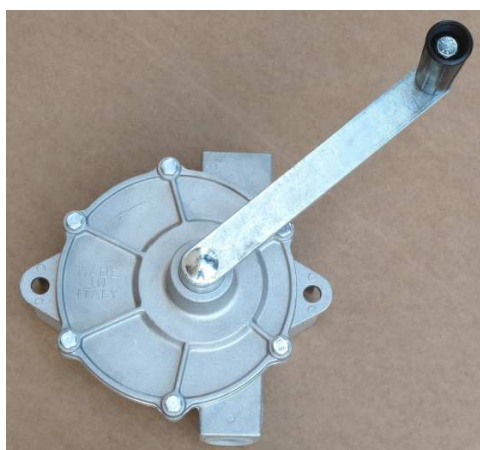
## VOLTIANA INOX



**VOLTIANA INOX PUMP:** Full rotary action hand pump, self-priming, fully reversible, one revolution 360°. Stainless steel body AISI 316.

Artic.	Vers.	Ø	lt/min	h	kg	€
V2 -INOX	AISI 316	1"	44	5 m	5,2	1.114,00

## PLINIO



**PLINIO PUMP:** Full rotary action hand pump, self-priming, fully reversible, one revolution 360°. Cast alloy body.

Artic.	Vers.	Ø	lt/min	h	kg	€
PLINIO 1	AL	3/4" x 1"	35	4 m	2,0	104,00



## G.P. VOLTIANA

**G.P. VOLTIANA:** Pumping unit complete with VOLTIANA hand pump, suction tube, bung adaptor, outlet elbow, flexible delivery hose and anti-drip spout.

Artic.	Vers.	Ø	lt/min	lt	kg	€
G.P. V0	GB	1/2"	23	200	5,0	247,00
G.P. V1	GB	3/4"	33	200	6,0	262,00
G.P. V2	GB	1"	43	200	8,0	329,00
G.P. V2	GL	1"	43	200	8,0	319,00



## G.P. FR

**G.P. FR:** Pumping unit complete with FR hand pump for gasoline, suction tube, flexible delivery hose and anti-drip spout. ATEX compliant

Artic.	Vers.	Ø	lt/min	lt	kg	€
G.P. FR	AL – GB be	1" – 3/4"	30	200	9,0	307,00



## G.P. VOLTIANA INOX

**G.P. V2 INOX:** Pumping unit complete with stainless steel VOLTIANA INOX hand pump, suction tube, bung adaptor, outlet elbow, flexible delivery hose and anti-drip spout. Food grade with PTFE and stainless steel hose.

Artic.	Vers.	Ø	lt/min	lt	kg	€
G.P. V2 IN 16	AISI 316	1"	44	200	9,0	1.405,00
G.P. V2 IN ALIM	AISI 316	1"	44	200	10,0	1.808,00



## G.P. R. PLASTIC

**G.P. R – P:** Pumping unit complete with hand pump, suction tube, bung adaptor and outlet curved hose

Artic.	Vers.	Ø	lt/min	lt	kg	€
G.P. R PLASTIC	PP	3/4" x 1"	40	60/200	3,5	160,00
G.P. R PLASTIC	RYTON	3/4" x 1"	40	60/200	3,5	420,00
G.P. R PLASTIC	PTFE	3/4" x 1"	40	60/200	3,5	898,00



## UREA PUMP

**UREA PUMP:** Rotary, self priming, reversible hand pump suitable for Urea, complete with 2" drum connector and 3 pcs. suction pipe and rigid outlet curved hose (ADB1). Available also with flow meters and flexible delivery hose. (ADB2).

Artic.	Vers.	Ø	lt/ciclo	lt	kg	€
ADB1	PP	3/4"	0,27	200	5,0	106,00
ADB2	PP	3/4"	0,27	200	5,5	409,00



## ADB 3 GROUP

**ADB 3:** Pumping unit complete with piston hand pump suitable for oil and AdBlue, rigid suction tube, bung adaptor and flexible delivery hose.

Artic.	Vers.	Ø	lt/colpo	lt	kg	€
ADB3	PP	3/4"	0,5	200	5,	118,00



## CADDY

**CADDY:** Manual rotary pump suitable for AdBlue with plastic manual nozzle and 3 m of hose mounted on a polyethylene tank, ideal for the refueling of small and light operating vehicles or crafts.

Artic.	Vers.	Ø	lt/min	lt	kg	€
CADDY 1	PP	3/4"	20	55	8,0	748,00
CADDY 2	PP	3/4"	20	110	12.0	790,00

## G.P. ROTARY FILTER



**G.P. ROTARY FILTER:** Diesel pumping unit complete with rotary hand pump, suction tube, bung adaptor, strainer (30  $\mu$ ), flexible delivery hose and anti-drip spout.

Artic.	Vers.	Ø	lt/min	lt	kg	€
G.P. RF	G	3/4"	20	200	8,0	318,00

## G.P. PADUS



**G.P. PADUS:** Pumping unit complete with gear hand pump, suction tube, bung adaptor, flexible delivery hose and anti-drip spout.

Artic.	Vers.	Ø	lt/min	lt	kg	€
G.P. PADUS	AL	3/4"	7,5	200	6,5	401,00

## G.P. HIGH FLOW

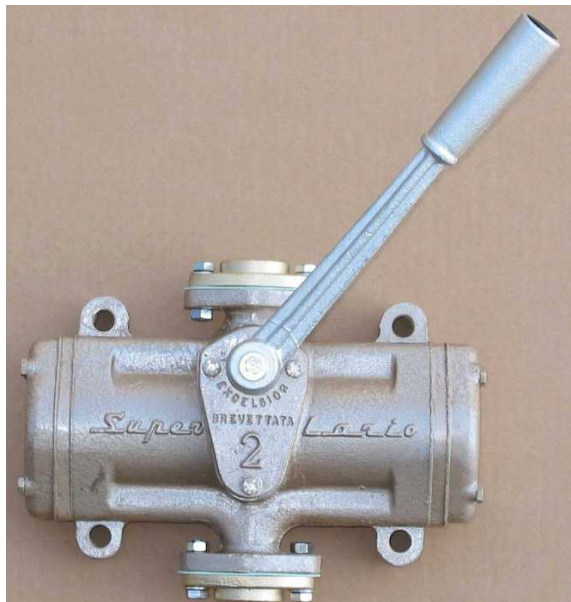


**G.P. HIGH FLOW:** Pumping unit complete with highliter pump, suction tube, bung adaptor, delivery hose and spout

Artic.	Vers.	Ø	lt/min	lt	kg	€
G.P. HF	AL	1"	100	200	8,0	473,00

## SUPER LARIO

**SUPER LARIO PUMP:** Piston hand pump, self-priming, double acting and reciprocating action; suction lift to 8m. Available with cast iron or bronze body.



Artic.	Vers.	Ø	lt/min	kg	€
SL 2	G	1"	40	8,7	461,00
SL 3	G	1" 1/4	55	12,2	558,00
SL 4	G	1" 1/2	80	18,5	706,00
SL 5	G	2"	110	28,1	1.044,00

Artic.	Vers.	Ø	lt/min	kg	€
SL 2	G-be	1"	40	8,7	510,00
SL 3	G-be	1" 1/4	55	12,2	653,00
SL 4	G-be	1" 1/2	80	18,5	816,00
SL 5	G-be	2"	110	28,1	1.122,00

Artic.	Vers.	Ø	lt/min	kg	€
SL 2	B-AM	1"	40	8,7	886,00
SL 3	B-AM	1" 1/4	55	12,2	1.203,00
SL 4	B-AM	1" 1/2	80	18,5	1.494,00
SL 5	B-AM	2"	110	28,1	2.117,00

## G.P. PISTON



**G.P. PISTON:** Pumping unit complete with cast-alloy hand piston pump, bung adaptor, suction tube, flexible delivery hose and anti-drip spout.

Artic.	Vers.	Ø	lt/min	lt	kg	€
G.P. PISTON	G-be	1" 1/2"	50	200	13	524,00

## BARADELLO JOLLY

**BARADELLO JOLLY PUMP:** Hand pump with body and couplings made of stainless steel, single diaphragm, self-priming and single acting. For boats (MARINA) or liquids with suspended solids (JOLLY A / B). Available with trolley on request.



Artic.	Vers.	Ø	lt/min	h	kg	€
BARADELLO JOLLY / A	AISI 304 AT	40–50 mm	120	4 m	12,0	343,00
BARADELLO JOLLY / B	AISI 304	40-50 mm	120	4 m	12,0	343,00
BARADELLO JOLLY MARINA / B	AISI 304	40 mm	120	4 m	12,0	343,00

## BARADELLO JUNIOR

**BARADELLO JUNIOR PUMP:** Hand pump with body and couplings made of stainless steel, single diaphragm, self-priming and single acting. MARINA version is for boats. Available with platform on request.



Artic.	Vers.	Ø	lt/min	h	kg	€
BARADELLO JUNIOR / A	AISI 304 AT	30–40 mm	60	4 m	7,0	255,00
BARADELLO JUNIOR / B	AISI 304	30–40 mm	60	4 m	7,0	255,00
BARADELLO JUNIOR MARINA / B	AISI 304	40 mm	60	4 m	7,0	255,00

## BARADELLO MINI



**BARADELLO MINI PUMP:** Hand pump with body and couplings made of stainless steel, single diaphragm, self-priming and single acting. MARINA version is for boats.

Artic.	Vers.	Ø	lt/min	h	kg	€
BARADELLO MINI / A	AISI 304 AT	30 mm	40	4 m	3,0	214,00
BARADELLO MINI / B	AISI 304	30 mm	40	4 m	3,0	214,00
BARADELLO MINI MARINA / B	AISI 304	30 mm	40	4 m	3,0	214,00



## BARADELLO MINI BARILE

**BARADELLO MINI BARILE PUMP:** Baradello Mini version for drums, complete with suction tube.

Artic.	Vers.	Ø	lt/min	h	kg	€
BARADELLO MINI BARILE	AISI 304	30 mm	30	4 m	4,0	230,00



## PATAY

**PATAY PUMP:** Double diaphragm hand pump, self-priming, double acting and reciprocating action. Epoxy coated and cast alloy body.

Artic.	Vers.	Ø	lt/min	kg	€
DD 70	AL	1"	70	3,5	390,00
DD 100	AL	1" 1/4	100	4,0	418,00
DD 120	AL	1" 1/2	135	5,0	653,00



## YAKO MARE

**YAKO MARE PUMP:** Single diaphragm hand pump with PVC body, self-priming and single action.

Artic.	Vers.	Ø	lt/min	kg	€
YAKO MARE ZZ	P	1" x 25	40	3,0	280,00
YAKO MARE VV	P	1" x 25	40	3,0	280,00



## TWICE

**TWICE PUMP:** Double diaphragm plastic hand pump, self-priming, double acting and reciprocating action.

Artic.	Vers.	Ø	lt/min	kg	€
TWICE	P	38 mm	100	3,0	202,00



## MP

**MP PUMP:** Single diaphragm plastic hand pump, self-priming and single action. Available for water N or for fuel V.

Artic.	Vers.	Ø	lt/min	kg	€
MP - N	P	1" x 27-38	25	1,0	67,00
MP - V	P - BE	1" x 27-38	25	1,0	110,00



## FOOT

**FOOT PUMP:** Foot operated diaphragm water pump.

Artic.	Vers.	Ø	lt/min	kg	€
FOOT SMALL	P	15 mm	10	0,3	57,00
FOOT BIG	P	15 mm	15	0,6	66,00





## YAKO ACIDI

**YAKO ACIDI PUMP:** Single diaphragm hand pump with PVC body, self-priming and single action.

Artic.	Vers.	Ø	lt/min	kg	€
YAKO ACIDI ZZ	P	1" x 25	40	3,0	300,00
YAKO ACIDI VV	P	1" x 25	40	3,0	300,00



## G.P. T/ACIDI

**G.P. T/ACIDI:** Pumping unit complete with single diaphragm hand pump, suction tube, bung adaptor, outlet elbow, flexible delivery hose and anti-drip spout.

Artic.	Vers.	Ø	lt/min	lt	kg	€
G.P. T/ACIDI	P	1" x 25	38	200	5,6	420,00



## LA

**LA PUMP:** Single diaphragm hand pump with cast iron body, self-priming and single action. Suitable for diesel, sea water and dirty water.

Artic.	Vers.	Ø	lt/min	kg	€
LA	G	1" 1/2	50	16	188,00



## GPL GAS

**LPG PUMP:** Piston hand pump on base used to transfer LPG. Connections are via hose-tails. The pump has a filter on the inlet side.

Artic.	Vers.	Ø	lt/min	kg	€
GPL GAS	OT AL	12 mm	18	3	427,00



## GUN PUMP

**GUN PUMP:** Gun hand pump with drive bottom. Lightweight and versatile for various kinds of liquids.

Artic.	Vers.	Ø	lt/min	kg	€
APL15 L	PP	19 mm	15	1,0	36,00



## GALLEY

**GALLEY PUMP:** Traditional galley pump, polished brass finish.

Artic.	Vers.	Ø	lt/min	kg	€
GALLEY	OT	15 mm	12	4,0	On request

## KEN

**KEN PUMP:** Hand pump for pumping used oil from marine motors and industrial engines pump. Lift action. Also available with clamps.



Artic.	Vers.	Ø	lt/min	kg	€
KEN A	AL - OT	16 P=1,5	5	0,4	30,80
KEN A - Z	AL - OT	16 P=1,5	5	0,4	34,50
KEN A - ZZ	AL - OT	16 P=1,5	5	0,4	36,80
KEN A - AUS	AL - OT	16 P=1,5	5	0,4	37,00



**KEN PUMP:** Hand pump for pumping used oil from marine motors and industrial engines sump. Lift action. Supplied with clamps.

Artic.	Vers.	Ø	lt/min	kg	€
KEN P/OT	OT	1/4"	5	0,65	46,80
KEN P/AL	AL - OT	1/4"	5	0,50	43,70



**KEN PUMP:** Hand pump for pumping used oil from marine motors and industrial engines sump. Lift action. Supplied with clamps.

Artic.	Vers.	Ø	lt/min	kg	€
KEN C/OT	OT	1/4"	5	0,7	53,10
KEN C/AL	AL - OT	1/4"	5	0,6	49,00



**KEN PUMP:** Hand pump for pumping used oil from marine motors and industrial engines sump. Lift action. Also available with clamps.

Artic.	Vers.	Ø	lt/min	kg	€
KEN L	OT	12 mm	4	0,35	36,40
KEN L - Z	OT	12 mm	4	0,40	40,70
KEN L - V	OT	1/4"	4	0,40	33,90



## BILGE

**BILGE PUMP:** Brass bilge pump underdeck mount.

Artic.	Vers.	Ø	lt/min	kg	€
BILGE B	OT	1"	12	4,0	On request



## DINGHY BAILER

**DINGHY BAILER PUMP:** Bilge plastic piston hand pump, self-priming and single action.

Artic.	Vers.	Ø	lt/min	kg	€
DINGHY 50	P	50 mm	30	1,0	41,00
DINGHY 70	P	50 mm	50	1,5	45,00
DINGHY 100	P	50 mm	70	2,0	49,00



## EOLO SUPER

**EOLO SUPER PUMP:** Double action air pump. Used both inflating and deflating.

Artic.	Vers.	lt	kg	€
EOLO SUPER 4	P	4	2,0	On request
EOLO SUPER 6	P	6	3,3	On request



## SUCCHIAROLA

**SUCCHIAROLA:** Plastic foot valve and strainer.

Artic.	Vers.	Ø	kg	€
SUCCH. TOP	P	25 – 37 mm	0,1	12,30
SUCCH. SIDE	P	25 – 37 mm	0,1	13,30

## BETA

**BETA PUMP:** Piston hand pump, self-priming, single action. Also available with clamp to fix on marine motors, industrial engine and gensets. Cast alloy body.



Artic.	Vers.	Ø	lt/min	kg	€
BETA 1	AL	16 mm	25	0,70	51,00
BETA 2	AL	1/2"	40	1,34	48,00
BETA 2	AL – BE	1/2"	40	1,34	84,00
BETA 2	AL – PTFE	1/2"	40	1,50	126,00

Artic.	Vers.	Ø	lt/min	kg	€
BETA 2 - Z	AL	1/2"	40	1,60	55,00

## G.P. BETA

**G.P. BETA 2:** Pumping unit complete with hand pump, rigid suction tube, flexible delivery hose and anti-drip spout.



Artic.	Vers.	Ø	lt/min	lt	kg	€
G.P. BETA 1	AL	16 mm	18	200	1,5	61,00
G.P. BETA 2	AL	1/2"	38	200	2,6	66,00
G.P. BETA 2	AL – BE	1/2"	38	200	2,6	94,00
G.P. BETA 2	AL – PTFE	1/2"	38	200	2,9	179,00

## G.P. MONOLITHE

**G.P. MONOLITHE:** Pumping unit complete with dosage hand pump, rigid suction tube and anti-drip spout. Available in stainless steel for lubricating oil or for edible fluid.



Artic.	Vers.	Ø	lt/min	lt	kg	€
G.P. MONO 1	GL	1/2"	1	200	8	On request
G.P. MONO / SS	INOX	1/2"	1	200	12	On request



## G.P. GAMMA

**G.P. GAMMA:** Pumping unit complete with hand pump, telescopic riser tube, bung adaptor and anti-drip nozzle. Also available in stainless steel for edible fluid and chemicals, or made of PVDF for solvents, acids, extremely aggressive chemicals and AdBlue.

Artic.	Vers.	Ø	lt/min	lt	kg	€
MA 3	ACC - AL	1/2" x 15	10	60/200	2	42,00
MA 3 / SS	INOX	1/2"	14	60/200	3	290,00
MA / PVDF	PVDF	23 mm	30	60/200	2	450,00



## G.P. OIL DOSAGE

**G.P. OIL DOSAGE:** Pumping unit complete with hand pump, telescopic suction tube, flexible delivery hose, anti-drip spout and digital flow meter.

Artic.	Vers.	Ø	lt/min	lt	kg	€
G.P. OIL DOSAGE 200	AL - ACC	1/2"	2	60/200	4	491,00
G.P. OIL DOSAGE 500	AL - ACC	3/4"	5	60/200	6	419,00



## GREASE BARREL

**GREASE BARREL:** Hand operated grease pump with bucket, flexible hose and hydraulic coupler.

Artic.	Vers.	Ø	kg/min	kg	€
GREASE BARREL 8	OT ACC	165 mm	1	8	129,00
GREASE BARREL 12	OT ACC	195 mm	1	12	134,00
GREASE BARREL 16	OT ACC	225 mm	1	16	139,00

## GREASE GUN

**GREASE GUN:** Lever grease gun, manual loading. Complete with flexible hose and hydraulic coupler.



Artic.	Vers.	Ø	kg/min	gr	€
GREASE GUN B	AL - ACC	57 mm	1	400	59,00
GREASE GUN C	AL - ACC	57 mm	1	600	61,00
GREASE GUN D	AL - ACC	57 mm	1	600	63,00
GREASE GUN E	AL - ACC	59 mm	1	600	65,00
GREASE GUN F	AL - ACC	59 mm	1	1000	On request

## OIL TEST



**OIL EXTRACTOR:** Sampling pump normally used forthieving samples of oil from machinery equipped with central lubrication system. Bottles and adaptors are available on request.

Artic.	Vers.	Stroke	kg	€
OIL TEST	P	150 mm	2	95,00



## OIL EXTRACTOR

**OIL EXTRACTOR:** Hand vacuum pump used for extracting or changing engine oils in motor vehicles, motor bikes, marine engines and stationary engines.

Artic.	Vers.	lt/min	lt	kg	€
OIL EXTRACTOR 4	P	10	4,0	3	188,00
OIL EXTRACTOR 6,5	P	15	6,5	4	230,00
OIL EXTRACTOR 14	P	15	14	6	270,00

## CAR TEST



**CAR TEST PUMP:** Radiator test and fuel injector test pump, for diesel and gasoline.

Artic.	Vers.	bar	kg	€
CT BENZ	AL	10	4,3	On request
CT DIES 1	AL	400	4,3	On request
CT DIES 2	AL	600	4,4	On request
CT RADIAT	P	10	2,0	On request

## OLEODYNAMIC



**OLEODYNAMIC PUMP:** Single action and double-stroke function hydraulic pump. Available with or without oil tank.

Artic.	Vers.	Ø	bar	kg	€
OLEODYN GLA 20	ACC AL	3/8"	460	11	On request
OLEODYN GLA 25	ACC AL	3/8"	320	11	On request
OLEODYN GLA 28	ACC AL	3/8"	250	11	On request
OLEODYN GLA 30	ACC AL	3/8"	220	11	On request
OLEODYN GLA 35	ACC AL	3/8"	160	11	On request
OLEODYN GLA 40	ACC AL	1/2"	120	11	On request
OLEODYN GLA 45	ACC AL	1/2"	90	11	On request



## SPRAYER S.S.

**SPRAYER S.S.:** Stainless steel precompression hand pump used for dispensing chemical agents, antiparasitic, herbicide and insecticide.

Artic.	Vers.	lt/min	bar	kg	€
SPRAYER SS	AISI 304	13	5	4,2	On request



## WATER PURIFIER

**WATER PURIFIER PUMP:** Microfilter (0.2 µ) pump effective against bacteria, protozoa and also reduces chemicals. Version EXPEDITION is suitable for large groups.

Artic.	Vers.	lt/min	bar	kg	€
WP EXPEDITION	AISI 316	4	1,5	5,2	On request
WP POCKET	AISI 316	1	1,5	0,3	On request
WP HIKER	P	1	1,5	0,5	On request
WP VARIO	P	1	1,5	0,5	On request





## RIO

**RIO PUMP:** Low stand hand pump, used for pumping water from wells of a depth of not more than 7 meters. Also available with bracket for wall mount P.

Artic.	Vers.	Ø	lt/min	h	kg	€
RIO 3 T	G	1" 1/4	26	7 m	15,5	206,00
RIO 3 P	G	1" 1/4	26	7 m	15,5	206,00



## RIO 3 SUB

**RIO 3 SUB PUMP:** Water well hand pump, complete with cylinder and 1,5m rods, used for pumping water from wells of a depth up to 28 meters.

Artic.	Vers.	Ø	lt/min	h	kg	€
RIO SUB	G	1" 1/4	20	28 m	18	650,00
ASTE	ACC	3/8"	-	-	1,3	39,00



## VENEZIA

**VENEZIA PUMP:** Low stand hand pump, used for pumping water from wells of a depth of no more than 7 meters. Also available with bracket for wall mount P.

Artic.	Vers.	Ø	lt/min	h	kg	€
VENEZIA T	G	1" 1/4	26	7 m	18	240,00
VENEZIA P	G	1" 1/4	26	7 m	18	240,00



## FIRENZE

**FIRENZE PUMP:** Low stand hand pump, used for pumping water from wells of a depth of no more than 7 meters.

Artic.	Vers.	Ø	lt/min	h	kg	€
MILANO	G	1" 1/4	25	7 m	40	354,00
FIRENZE	G	1" 1/4	28	7 m	65	622,00



## DEEP WELL INDIA MARK

**INDIA MARK PUMP:** Hand water pump complete with cylinder, used for pumping water from deep wells, up to 90 meters.

Artic.	Vers.	Ø	lt/min	h	kg	€
DWIM 50	ACC	1" 1/4	30	40 m	60	On request
DWIM 70	ACC	1" 1/4	25	60 m	65	On request
DWIM 90	ACC	1" 1/4	20	90 m	70	On request



## VLOM

**VLOM PUMP:** Hand water pump used for pumping water from deep wells, up to 120 meters.

Artic.	Vers.	Ø	lt/min	h	kg	€
VLOM 30	AISI 304	1" 1/4	20	30 m	50	On request
VLOM 120	AISI 304	1" 1/4	20	120 m	90	On request

## STEP BY STEP

**STEP BY STEP PUMP:** Treadle pump for irrigation. Available in middle steel or stainless steel.



Artic.	Vers.	Ø	lt/min	h	kg	€
STEP ECO	INOX	1" 1/2	70	7 m	11	On request
TREADLE	ACC	1" 1/2	80	7 m	48	On request

## DIS

**DIS PUMP:** Manual air piston pump with several applications: for blockage clearing, for inflating and for testing gas installations.



Artic.	Vers.	Ø	bar	kg	€
DIS	ACC	1/2"	8	7	204,00



## PI

**PI PUMP:** Manual hydraulic test pump. It comes complete with tank, gauge, coil and double control valve. PI 35 comes with single control valve. Delivery hose on request.

Artic.	Vers.	Ø	lt	bar	kg	€
PI 25	G	3/8"	12	25	10,0	407,00
PI 35	G	1/2"	12	35	8,0	292,00
PI 45	G	3/8"	21	45	12,0	471,00
PI 50	G	3/8"	38	50	21,5	582,00
PI 100	G	3/8"	38	100	21,5	582,00



## PT

**PT PUMP:** Manual workshop hydraulic test pump. It comes complete with rectangular tank and gauge. The type PT/B ACC is equipped with delivery hose (1,5 meters long), for PT 200 SS and PT/70 its on request.

Artic.	Vers.	Ø	lt	bar	kg	€
PT/B ACC	B - ACC	1/2"	13	40	7,7	202,00
PT/B SS	B - AISI 304	1/2"	13	40	7,7	277,00
PT/70	G - ACC	1/2"	13	70	8,5	349,00
PT 200 SS	AISI 304	1/2"	13	200	14	2.800,00



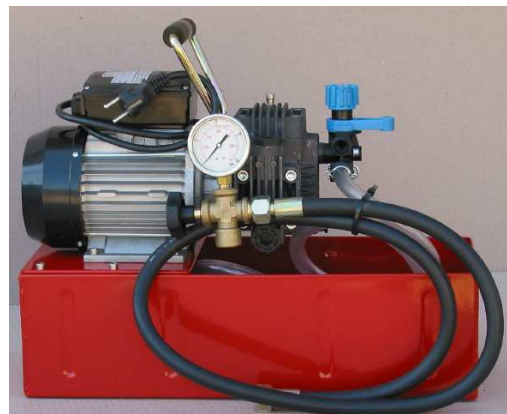
## PI/HP

**PI/HP PUMP:** Manual hydraulic high pressure test pump. It comes complete with tank and gauge. Delivery hose on request.

Artic.	Vers.	Ø	lt	bar	kg	€
PI 300	ACC	1/2"	100	300	54	1.960,00
PI 500	ACC	1/2"	100	500	54	2.000,00
PI 1.000	ACC	1/2"	100	1.000	60	2.264,00
PI 1.300	ACC	1/2"	100	1.300	60	2.585,00

## EL PTP 43

**EL PTP PUMP:** Electric hydraulic test pump equipped with pressure regulator and complete with 13 litres tank and delivery hose (1,5 meters long).



Artic.	Vers.	Ø	lt/min	bar	V	kW	kg	€
EL PTP 43	AL ACC	1/2"	13	20	230	0,75	15	979,00

## EL PTP 50

**EL PTP PUMP:** Electric hydraulic test pump equipped with pressure regulator and delivery hose (1,5 meters long). Supplied without tank.



Artic.	Vers.	Ø	lt/min	bar	V	kW	kg	€
EL PTP 50	OT	1/2"	7	50	230	1,75	15.2	592,00

## EL PTP

**EL PTP PUMP:** Electric hydraulic test pump equipped with pressure regulator and complete with 100 litres tank, coil, gauge and control valve.



Artic.	Vers.	Ø	lt/min	bar	V	kW	kg	€
EL PTP 120	OT ACC	1/2"	8	120	230/400	1,50	66	On request
EL PTP 180	OT ACC	3/8"	13	180	400	5,00	66	2.500,00
EL PTP 250	OT ACC	1/2"	13	250	400	6,35	76	4.100,00
EL PTP 500	OT ACC	3/8"	15	500	400	15,00	132	8.000,00



## MOTOR PTP

**MOTOR PTP PUMP:** Motor hydraulic test pump with 6 Hp gasoline engine, equipped with pressure regulator, mounted on trolley. Ideal for testing pipe line.

Artic.	Vers.	Ø	lt/min	bar	kg	€
MOTOR PTP	ACC	1/2"	12	120	60	2.962,00

## AIR OPERATED PUMPS

### AIR PTP

**AIR PTP PUMP:** Air operated hydraulic test pump. Piston pump equipped with pressure regulator. Also available on trolley on request.

Artic.	Vers.	Ø	lt/min	bar	kg	€
AIR PTP 61	ACC	3/8"	3,0	40	8	3.072,00
AIR PTP 201	ACC	3/8"	3,0	160	8	3.068,00
AIR PTP 401	ACC	1/4"	1,5	300	9	3.193,00
TROLLEY	ACC	-	-	-	15	540,00



### AIR PTP

**AIR PTP PUMP:** Air operated hydraulic piston test pump. It is equipped with pressure regulator, max oil flow rate 1,75 lt/min. It comes complete with 10 liters tank and metallic security frame.

Artic.	Vers.	Ø	bar	kg	€
AIR PTP 651	ACC	1/2"	455	32	4.200,00
AIR PTP 1201	ACC	1/4"	840	32	4.465,00
AIR PTP 1701	ACC	1/4"	1190	32	4.770,00
AIR PTP 2651	ACC	1/4"	1855	32	4.998,00
AIR PTP 3451	ACC	1/4"	2415	32	5.480,00
AIR PTP 4000	ACC	1/4"	4224	38	On demand
AIR PTP 5500	ACC	1/4"	5500	45	On demand



## ROTOPUMP

**ROTOPUMP:** Air driven gear pump, made of brass or stainless steel with Viton seals and stainless steel shaft. Suitable to transfer oil, antifreeze, lubricants, diesel oil, and water.

Artic.	Vers.	Ø	lt/min	bar	kg	€
ROTO PUMP B	OT	3/8"	10	4	1,5	316,00
ROTO PUMP INOX	AISI 304	3/8"	10	4	1,5	377,00



## DRUDIA-SET

**DRUDIA-SET:** Diesel oil set complete with air operated rotary pump and accessories (suction tube, flexible delivery hose and manually operated nozzle).

Artic.	Vers.	Ø	lt/min	bar	kg	€
DRUDIA SET	G	3/4"	30	4	12	396,00



## G.P. VERTINOX - be

**G.P. VERTINOX - be:** Pumping unit complete with pneumatic pump, rigid suction tube, flexible delivery hose and automatic nozzle. Suitable for fuel.

Artic.	Vers.	Ø	lt/min	bar	kg	€
G.P. VERTINOX - be	ACC	3/4"	25	4	14	622,00



## CUBIC

**CUBIC PUMP:** Double diaphragm pump, compressed air driven. Self-priming, double action. Conforming to ATEX standard.

Artic.	Vers.	Ø	lt/min	bar	kg	€
MIDGET BOX	P	1/4"	5	7	0,5	469,00
CUBIC 15	P	3/8"	17	7	1	643,00



## BOXER

**BOXER PUMP:** Double diaphragm pump, compressed air driven. Self-priming and double action. Conforming to ATEX standard.

Artic.	Vers.	Ø	lt/min	bar	kg	€
MICRO BOXER	P	1/2"	30	7	2	651,00
MINI BOXER	P	1/2"	50	7	4	728,00
BOXER 81	P	1"	100	7	5	1.108,00
BOXER 100	P	1"	150	7	7	1.371,00
BOXER 150	P	1" 1/4	220	7	13	1.791,00
BOXER 250	P	1" 1/2	340	7	16	2.287,00
BOXER 502	P	2"	650	7	55	5.012,00
BOXER 503	P	3"	850	7	60	5.671,00



## BOXER METAL

**BOXER METAL PUMP:** Double diaphragm metal pump (AL and stainless steel AISI 316), compressed air driven. Self-priming, double action; for aggressive fluids and for edible liquids. On request: POWDER type ideal to transfer dry powders.

Artic.	Vers.	Ø	lt/min	bar	kg	€
MICRO BOXER M	AL	1/2"	30	7	3	651,00
MINI BOXER M	AL	1/2"	50	7	5	816,00
BOXER 81 M	AL	1"	100	7	1	1.201,00
BOXER 100 M	AL	1"	150	7	10	1.346,00
BOXER 150 M	AL	1" 1/4	220	7	16	2.066,00
BOXER 251 M	AL	1" 1/2	340	7	21	2.585,00
BOXER 502 M	AL	2"	600	7	60	3.627,00
BOXER 503 M	AL	3"	850	7	66	4.050,00

Artic.	Vers.	Ø	lt/min	bar	kg	€
MICRO BOXER AISI 316	AISI 316	1/2"	30	7	5	1.195,00
MINI BOXER AISI 316	AISI 316	1/2"	50	7	7	1.528,00
BOXER 80 AISI 316	AISI 316	1"	100	7	11	2.550,00
BOXER 100 AISI 316	AISI 316	1"	150	7	15	3.025,00
BOXER 150 AISI 316	AISI 316	1" 1/4	220	7	21	4.345,00
BOXER 251 AISI 316	AISI 316	1" 1/2	340	7	32	5.492,00
BOXER 502 AISI 316	AISI 316	2"	600	7	75	7.650,00
BOXER 503 AISI 316	AISI 316	3"	850	7	81	7.900,00



## STRONG 3:1

**POMPA STRONG 3:1:** Double diaphragm metal pump (AL and stainless steel AISI 316), pressure ratio 3:1, excellent for heavy duty.

Artic.	Vers.	Ø	lt/min	bar in - out	kg	€
STRONG AL	AL	3/4"	24	6 - 18	15	2.425,00
STRONG AISI 304	AISI 304	3/4"	24	6 - 18	17	3.400,00



## VERTI OIL

**VERTI OIL PUMP:** Air-operated piston pump for lubricating oil. Self-priming and single action.

Artic.	Vers.	Ø	lt/min	Ratio	lt	kg	€
V. OIL 1 – 75	AL ACC	1/2"	16	1 : 1	60	4	263,00
V. OIL 1 – 95	AL ACC	1/2"	16	1 : 1	200	5	285,00
V. OIL 3 – 75	AL ACC	1/2"	13	3 : 1	60	4	309,00
V. OIL 3 – 95	AL ACC	1/2"	13	3 : 1	200	5	337,00

## VERTI GREASE

**VERTI GREASE PUMP:** Air-operated piston pump for grease. Self-priming and double action.

Artic.	Vers.	Ø	kg/min	Ratio	Fusti [kg]	kg	€
VG – M – 40	AL ACC	3/8"	0,8	40 : 1	18/30	9	254,00
VG – M – 65	AL ACC	3/8"	1,0	60 : 1	18/30	10	311,00
VG – M – 100	AL ACC	3/8"	0,7	100 : 1	18/30	12	408,00
VG – L – 40	AL ACC	3/8"	0,8	40 : 1	50/60	9	263,00
VG – L – 65	AL ACC	3/8"	1,0	65 : 1	50/60	10	322,00
VG – L – 100	AL ACC	3/8"	0,7	100 : 1	50/60	12	403,00
VG – XL – 40	AL ACC	3/8"	0,8	40 : 1	180/210	9	273,00
VG – XL – 65	AL ACC	3/8"	1,0	60 : 1	180/210	10	354,00
VG – XL – 100	AL ACC	3/8"	0,7	100 : 1	180/210	12	439,00

## VERTI INOX

**VERTI INOX PUMP:** Air operated pump. Self-priming, single and double action. AISI 304 has Viton seals, available made of AISI 316 on request.

Artic.	Vers.	Ø	lt/min	Ratio	lt	kg	€
VERTINOX 601 SE	AISI 304	1/2"	25	1 : 1	60	4,8	908,00
VERTINOX 203 SE	AISI 304	1/2"	14	3 : 1	200	8,0	962,00
VERTINOX 205 DE	AISI 304	1/2"	14	5 : 1	200	9,0	1.059,00

Artic.	Vers.	Ø	lt/min	bar	lt	kg	€
VERTINOX AIR1	AISI 316	1/2"	90	6	200	5,0	697,00
VERTINOX AIR2	AISI 316	1/2"	100	6	200	5,0	975,00
VERTINOX AIR3	AISI 316	1/2"	100	6	200	5,0	955,00





## OIL-KIT

**OIL KIT:** Lubricating pumping unit, complete with 3m delivery hose and nozzle with digital meter.

Artic.	Vers.	Ø	lt/min	Ratio	lt	kg	€
OIL KIT 1-75	AL	1/2"	16	1 : 1	60	6	595,00
OIL KIT 1-95	AL	1/2"	16	1 : 1	200	8	580,00
OIL KIT 3-75	AL	1/2"	13	3 : 1	60	6	638,00
OIL KIT 3-95	AL	1/2"	13	3 : 1	200	8	627,00



## WASTE OIL TANK

**ASP:** Waste oil tank on wheels equipped with level indicator, suction probes and kit storage compartment. Suitable for pneumatic emptying of the tank.

Artic.	Max depression	Delivery pression	lt	Pressurizing time	kg	€
ASP	0,8 bar	0,5 bar	90	1,5 min	32	662,00



## GREASE KIT

**GREASE KIT:** Pneumatic grease pump, complete with grease gun, 3 mt extension hose, lid and bung adaptor and trolley.

Artic.	Vers.	Ø	lt/min	Ratio	Fusti [kg]	kg	€
G. KIT M 40	AL ACC	3/8"	0,8	40 : 1	20/30	10	549,00
G. KIT M 65	AL ACC	3/8"	1	65 : 1	20/30	10	567,00



## PNEUMO GUN

**PNEUMO GUN:** Air operated grease gun complete with hose and fitting coupler.



Artic.	Vers.	Ø	kg	€
P. GUN 2293 B	ACC	52 mm	0,4	133,00
P. GUN 2293 C	ACC	52 mm	0,6	143,00

## VERTI INOX UREA

**VERTI INOX UREA:** Pompa pneumatica in acciaio inox idonea per fusti e contenitori fino a 1000 litri con sistema di pompaggio a doppio effetto.



Artic.	Vers.	Ø	lt/min	bar	kg	€
VERTINOX UREA	ACC	1/2"	15	24	15	700,00

## ELECTRIC PUMPS

### AC & DC UREA PUMPS



**AC & DC UREA PUMPS:** Diaphragm electric pump, body made of plastic, 12 V, 24V o a 230 V

Artic.	Vers.	Ø	lt/min	V	W	kg	€
AC UREA	PP	3/4"	34	230	400	7,0	371,00
DC UREA	PP	3/4"	36	12	260	4,0	371,00
DC UREA	PP	3/4"	36	24	310	4,0	371,00



## VISCOMAT VANE

**VISCOMAT VANE:** Self priming vane pump, suitable to transfer lubricating oil in large quantity at medium pressure. By-pass incorporated.

Artic.	Vers.	Ø	lt/min	bar	V	Kw	kg	€
VISCOMAT V 70M	G	1"	25	6	230	0,75	14,1	424,00
VISCOMAT V 70T	G	1"	25	6	400	0,75	14,1	424,00
VISCOMAT V 90M	G	1"	50	5	230	1,60	16,0	483,00
VISCOMAT V 90T	G	1"	50	5	400	2,00	16,0	483,00



## VISCOMAT GEAR

**VISCOMAT GEAR:** Self priming gear pump, suitable to transfer oil at high pressure. By-pass incorporated.

Artic.	Vers.	Ø	lt/min	bar	V	Kw	kg	€
VISCOMAT G 200M	AL	1"	9	12	230	0,55	9,0	396,00
VISCOMAT G 200T	AL	1"	9	12	400	0,55	9,0	396,00
VISCOMAT G 230M	AL	1"	14	16	230	0,75	12,5	522,00
VISCOMAT G 230T	AL	1"	14	16	400	0,75	12,5	522,00
VISCOMAT G 350M	AL	1"	9	25	230	0,75	12,5	543,00
VISCOMAT G 350T	AL	1"	9	25	400	0,75	12,5	543,00



## VISCOMAT FLOW MAT

**VISCOMAT FLOW MAT:** Single phase self priming gear pumps with pressure switch for an automatic switch-off at the end of the delivery. Switch-on of the motor is performed automatically when the nozzle opens.

Artic.	Vers.	Ø	lt/min	bar	V	Kw	kg	€
VISCO FLOW 200	AL	1"	9	12	230	0,55	12	730,00
VISCO FLOW 230	AL	1"	14	16	230	0,75	15	820,00
VISCO FLOW 350	AL	1"	9	25	230	0,75	15	841,00

## UP FLEX IMP

**UP – FLEX – IMP:** Self-priming water pump with self-lubricating impeller. Available with 12 V DC, 24 V DC e 230 V AC motor.



Artic.	Vers.	Ø	lt/min	bar	V	A	kg	€
UP 1 – 12 DC	OT	1/2"	35	0,8	12	11,0	2,8	169,00
UP 1 – 24 DC	OT	1/2"	35	0,8	24	5,5	2,8	169,00

Artic.	Vers.	Ø	lt/min	bar	V	A	kg	€
UP 1 AC	OT	1/2"	30	1,2	230	4,3	4,6	339,00

## UP GEAR BR

**UP GEAR BR:** Self priming bronze gear pump. Available with 12 V DC, 24 V DC o 230 V AC motor.



Artic.	Vers.	Ø	lt/min	bar	V	A	kg	€
UP 3 – 12 DC	OT	3/8"	15	2	12	6,0	1,5	153,00
UP 3 – 24 DC	OT	3/8"	15	2	24	4,0	1,5	153,00
UP 6 – 12 DC	OT	1/2"	26	2	12	11,0	3,1	226,00
UP 6 – 24 DC	OT	1/2"	26	2	24	6,0	3,1	226,00
UP 9 – 12 DC	OT	3/8"	12	4	12	6,0	3,4	241,00
UP 9 – 24 DC	OT	3/8"	12	4	24	3,5	3,4	241,00
UP 10 – 12 DC	OT	3/8"	18	7	12	10,5	4,5	316,00
UP 10 – 24 DC	OT	3/8"	18	7	24	4,5	4,5	316,00
UP 12 – 12 DC	OT	1/2"	40	2,5	12	12,0	4,0	321,00
UP 12 – 24 DC	OT	1/2"	40	2,5	24	8,0	4,0	321,00

Artic.	Vers.	Ø	lt/min	bar	V	A	kg	€
UP 3 AC	OT	3/8"	10	6	230	0,9	4,6	303,00
UP 6 AC	OT	1/2"	28	4	230	3,8	4,6	384,00

## UP GEAR INOX

**UP GEAR INOX:** Self priming stainless steel pump with PTFE gears. Available with motor 12 V DC, 24 V DC e 230 V AC. Ideal to transfer edible fluids and chemicals.



Artic.	Vers.	Ø	lt/min	bar	V	A	kg	€
UP X 3 DC	AISI	3/8"	14	2	12	6,0	1,5	292,00
UP X 4 DC	AISI	3/8"	15	2	24	4,0	1,5	292,00
UPX 9 – 12 DC	AISI	3/8"	15	4	12	5,0	3,4	357,00
UPX 9 – 24 DC	AISI	3/8"	14	4	24	3,5	3,4	357,00

Artic.	Vers.	Ø	lt/min	bar	V	A	kg	€
UP X AC	AISI	3/8"	10	6	230	1,2	4,6	430,00

## POMPE EF



**EF PUMPS:** Chamber diaphragm pump with motor 12 V DC, self priming and works dry without damage, suitable for chemical products. (N°\*: numbers of membranes)

Artic.	Vers.	Ø	lt/min	bar	N° *	kg	€
EF 1000	PP	3/8"	3,8	2,8	2	0,6	135,00
EF 2200	PP	3/8" NPT	8,3	4,1	3	2,2	246,00
EF 3000	PP	1/2" NPT	11,4	3,4	5	2,5	288,00
EF 4000	PP	1/2" NPT	15,1	3,4	5	2,5	330,00
EF 5500	PP	1/2" NPT	20,8	3,4	5	2,5	377,00
EF 7000	PP	1/2" NPT	26,5	4,1	5	4,3	790,00

## DIESEL PUMP DC



**DIESEL PUMP DC:** Low voltage diesel vane pump. Self priming, by-pass valve and strainer incorporated. Also available with cable and clips for battery connection (CLIP type).

Artic.	Vers.	Ø	lt/min	V	A	kg	€
DP DC 38/12	G	1"	38	12	12	2,0	128,00
DP DC 38/24	G	1"	38	24	6	4,0	128,00
DP DC 38/12 CLIPS	G	1"	38	12	12	2,0	143,00
DP DC 38/24 CLIPS	G	1"	38	24	6	4,0	143,00
DP DC 60/12 CLIPS	G	1"	60	12	12	2,6	229,00
DP DC 60/24 CLIPS	G	1"	60	24	6	6,0	229,00

## DIESEL PUMP AC



**DIESEL PUMP AC:** Single phase self priming vanes electric pump ideal for diesel. Two versions are available: made of cast iron (Vers. G) by-pass valve and strainer incorporated or made of aluminium (Vers. AL) with bronze impeller (liquid ring type).

Artic.	Vers.	Ø	lt/min	V	kW	kg	€
EEM 20	OT	3/4"	28	230	0,37	6,8	142,00
ENT 20	OT	3/4"	28	400	0,37	6,1	184,00
EEM 25	OT	1"	47	230	0,44	10,0	156,00
ENT 25	OT	1"	43	400	0,44	8,6	243,00
DP 60 AC	G	1"	56	230	0,37	7,6	170,00
DP 80 AC	G	1"	78	230	0,60	11,5	269,00
DP 100 AC	G	1" 1/4	100	230	1,10	12,0	505,00
DP 120 AC	G	1" 1/4	120	230	1,60	15,0	572,00
DP 150 AC	G	1" 1/4	150	230	2,00	18,0	734,00
DP 200 AC	AL	2"	200	230	2,40	20,0	1.230,00



## DIESEL PUMP BIG



**DIESEL PUMP BIG:** Three phase open impeller electric pump, self priming, high capacity. Ideal for diesel.

Artic.	Vers.	Ø	lt/min	V	kW	kg	€
DP BIG 1	G	1"	120	400	0,55	15	514,00
DP BIG 1,5	G	1" 1/2	325	400	0,75	20	624,00
DP BIG 2	G	2"	500	400	1,50	22	672,00
DP BIG 3	G	3"	700	400	2,20	30	853,00
DP BIG 4	G	3"	900	400	4,00	60	1.997,00

## PTP DIESEL



**PTP DIESEL:** Diesel-oil transfer electric barrel pump, 12 or 24V, equipped with nozzle, suction and delivery tubes. Flow meter on request.

Artic.	Vers.	Ø	lt/min	V	A	kg	€
PTP 12 - 38	G	1"	38	12	12	8	326,00
PTP 24 - 38	G	1"	38	24	6	8	326,00
PTP 12 - 60	G	1"	60	12	12	12	379,00
PTP 24 - 60	G	1"	60	24	6	12	379,00
PTP 230	G	1"	56	230	-	12	432,00

## FIX UP DIESEL



**FIX UP DIESEL:** Diesel-oil transfer electric barrel pump, 230 V, equipped with nozzle, suction and delivery hoses and mechanical flow meter.

Artic.	Vers.	Ø	lt/min	V	kW	kg	€
FIX UP 12	G	1"	38	12	0,27	13	507,00
FIX UP 60	G	1"	58	230	0,37	13	548,00
FIX UP 80	G	1"	78	230	0,60	18	628,00



## HI FI DIESEL

**HI FI DIESEL:** Diesel-oil transfer wall mounted electric pump (230 V) equipped with automatic nozzle, flow meter, strainer and hoses (4 meters long). Ideal for diesel tanks.

Artic.	Vers.	Ø	lt/min	V	kW	kg	€
HI FI 60	G	1"	56	230	0,24	16	605,00
HI FI 80	G	1"	78	230	0,50	20	752,00



## BENZ ATEX

**BENZ ATEX:** Explosion proof motor pump suitable solvents. Available with 12 V DC or 230 V AC.

Artic.	Vers.	Ø	lt/min	V	kg	€
EX 50 12 DC	G	1"	50	12	8	442,00
BENZ ATEX 12 DC	G - be	1"	50	12	14	742,00
BENZ ATEX 24 DC	G - be	1"	50	24	14	742,00
BENZ ATEX 230 AC	G - be	1"	75	230	16	1.130,00



## FIX UP BENZ ATEX DC

**FIX UP BENZ ATEX DC:** Gasoline transfer electric low voltage explosion proof pump, equipped with flow meter, suction tube, delivery hose and nozzle.

Artic.	Vers.	Ø	lt/min	V	kg	€
FIX UP BENZ 12 DC	G - be	1"	50	12	18	1.230,00
FIX UP BENZ 24 DC	G - be	1"	50	24	18	1.230,00
FIX UP BENZ DC 12 METER	G - be	1"	50	12	22	1.391,00
FIX UP BENZ DC 24 METER	G - be	1"	50	24	22	1.391,00

## FIX UP BENZ ATEX AC



**FIX UP BENZ ATEX AC:** Gasoline transfer electric explosion proof pump (230 V) equipped with hose, tube, nozzle and flow meter.

Artic.	Vers.	Ø	lt/min	V	kg	€
FIX UP BENZ AC	G - be	1"	50	230	20	1.379,00
FIX UP BENZ AC METER	G - be	1"	50	230	24	1.660,00



## TR – ACID

**TR – ACID:** Drum and barrel electric pump. For acids and corrosive fluids. Available with riser tube of 90 or 120 cm length.

Artic.	Vers.	Ø	lt/min	h	V	kW	kg	€
TR PP 0,5	PP	42,0 mm	80	90/120	230	0,50	7	1.100,00
TR PP 0,8	PP	42,0 mm	90	90/120	230	0,80	7	1.188,00
TR PVDF 0,5	P	40,0 mm	80	90/120	230	0,50	7	1.690,00
TR PVDF 0,8	P	40,0 mm	90	90/120	230	0,80	7	1.762,00
TR INOX 0,5	AISI 316	42,5 mm	80	90/120	230	0,50	9	1.340,00
TR INOX 0,8	AISI 316	42,5 mm	90	90/120	230	0,80	9	1.420,00



## GALVANO

**GALVANO:** Centrifugal electric pump, self priming, reversible, ideal for chemicals, cosmetics, pharmaceutical and edible liquids. Supplied on trolley.

Artic.	Vers.	Ø	lt/min	V	kW	kg	€
GALV 105	AISI 316 L	3/4"	100	400	0,75	18	On request
GALV 120	AISI 316 L	1"	165	400	1,10	22	On request
GALV 130	AISI 316 L	1" 1/4	330	400	1,50	30	On request



## CHEM

**CHEM:** Three phases centrifugal electric pump for chemicals with suspended parts and for liquids of high viscosity. Single phase motor on demand.



Artic.	Vers.	Ø	lt/min	V	kW	kg	€
MB 80 PP	P	1" 1/2	100	400	0,38	9	960,00
MB 100 PP	P	1" 1/2	165	400	0,56	10	1.000,00
MB 110 PP	P	2"	330	400	1,10	16	1.530,00
MB 120 PP	P	2"	415	400	1,50	21	1.581,00
MB 130 PP	P	2"	500	400	2,20	23	1.600,00
MB 140 PP	P	2"	665	400	3,00	30	1.840,00
MB 150 PP	P	2" 1/2	700	400	4,10	45	2.500,00
MB 155 PP	P	2" 1/2	750	400	5,60	60	2.800,00
MB 160 PP	P	2" 1/2	915	400	7,45	70	3.000,00

Artic.	Vers.	Ø	lt/min	V	kW	kg	€
MB 80 PVDF	P	1" 1/2	100	400	0,38	9	1.570,00
MB 100 PVDF	P	1" 1/2	165	400	0,56	10	1.610,00
MB 110 PVDF	P	2"	330	400	1,10	16	2.295,00
MB 120 PVDF	P	2"	415	400	1,50	21	2.400,00
MB 130 PVDF	P	2"	500	400	2,20	23	2.500,00
MB 140 PVDF	P	2"	665	400	3,00	30	3.000,00
MB 150 PVDF	P	2" 1/2	700	400	4,10	45	5.400,00
MB 155 PVDF	P	2" 1/2	750	400	5,60	60	5.640,00
MB 160 PVDF	P	2" 1/2	915	400	7,45	70	6.000,00

## ENOX FILTER COLOMBO

**ENOX FILTER COLOMBO:** Stainless steel pump with strainer for wine filtration or to reduce cloudy.



Artic.	Vers.	lt/h	N°Filter	V	kg	€
EF COL 6	AISI 304	250	6	230	17	On request
EF COL 12	AISI 304	500	10	230	18	On request

## ENOX



**ENOX:** Self priming electric reversible pump. Suitable to transfer wine or low viscosity edible fluids.

Artic.	Vers.	Ø	lt/min	V	kW	kg	€
ENOX S20 I	AISI 304	20 mm	33	230	0,37	5	271,00
EEM 20	OT	3/4"	28	230	0,37	6,8	142,00
EEM 25	OT	1"	47	230	0,44	10,0	156,00



## SLOW TRANSFER PUMP

**SLOW TRANSFER PUMP:** Stainless steel low speed pump with flexible impeller. Suitable for transfer of delicate and viscous fluids, with solid parts in suspension.

Artic.	Vers.	Ø	lt/min	RPM	V	kW	kg	€
STP MINI M	AISI 316	3/4"	16,6	900	230	0,37	9,3	610,00
STP MINI T	AISI 316	3/4"	16,6	900	400	0,37	9,3	600,00
STP MIDEX M	AISI 316	1" 1/4	64	900	230	0,56	15	916,00
STP MIDEX T	AISI 316	1" 1/4	64	900	400	0,56	15	910,00
STP MINOR M	AISI 316	40 mm	115	900	230	1,50	20	1.140,00
STP MINOR T	AISI 316	40 mm	115	900	400	1,50	20	1.122,00
STP MAJOR	AISI 316	60 mm	300	700	400	1,50	38	2.036,00
STP MAXI	AISI 316	80 mm	600	470	400	3,30	68	2.980,00

## EP NAUTIC

**EP NAUTIC:** Liquid ring self priming bronze reversible pump. Available with 230 V single phase or 400 V three phases motors.



Artic.	Vers.	Ø	lt/min	V	kW	kg	€
EP 20 INOX	INOX- B	20	25	230	0,37	7,6	194,00
EP 25 INOX	INOX - B	25	55	230	0,75	7,7	271,00
EP 20 M	B	20	30	230	0,22	5,6	260,00
EP 20 T	B	20	30	400	0,26	5,7	260,00
EP 25 M	B	25	60	230	0,45	9,3	312,00
EP 25 T	B	25	60	400	0,56	9,5	312,00
EP 30 M	B	30	75	230	0,75	12,8	434,00
EP 30 T	B	30	75	400	0,75	13,2	434,00
EP 40 M	B	40	120	230	1,10	18,0	502,00
EP 40 T	B	40	120	400	1,10	18,0	502,00
EP 50 M	B	50	230	230	1,87	25,2	765,00
EP 50 T	B	50	230	400	1,87	27,2	765,00
EP 70 T	B	70	500	400	5,50	75,0	3.560,00

## EP NAUTIC INOX



**EP NAUTIC INOX:** Liquid ring self priming stainless steel pump, two way rotation. Ideal to transfer edible liquids. Available with 230 V single phase or 400 V three phases motors.

Artic.	Vers.	Ø	lt/min	V	kW	kg	€
EP NEOS M	AISI 316	3/4"	29	230	0,22	5,1	387,00
EP NEOS T	AISI 316	3/4"	29	400	0,26	5,1	387,00
EP JUNIOR M	AISI 316	1" 1/4	60	230	0,45	9,5	604,00
EP JUNIOR T	AISI 316	1" 1/4	60	400	0,56	9,6	604,00
EP SENIOR M	AISI 316	1" 1/2	120	230	1,12	17,5	930,00
EP SENIOR T	AISI 316	1" 1/2	120	400	1,12	17,6	930,00
EP MASTER M	AISI 316	2"	230	230	1,49	25,0	1.386,00
EP MASTER T	AISI 316	2"	230	400	1,86	27,0	1.386,00
EP 70 INOX T	AISI 316	70 mm	500	400	7,50	75,0	4.970,00

## EP NAUTIC ATEX



**EP NAUTIC ATEX:** Explosion proof groups as per ATEX standard. Available on base or trolley. Three phases motors.

Artic.	Vers.	Ø	lt/min	V	kW	kg	€
EX 50 230 AC	G	1"	50	230	0,25	7,5	490,00
ADPE NAUTIC 20	B	20 mm	29	400	0,25	10	1.800,00
ADPE NAUTIC 25	B	25 mm	60	400	0,55	20	1.890,00
ADPE NAUTIC 30	B	30 mm	75	400	0,75	40	1.970,00
ADPE NAUTIC 40	B	40 mm	120	400	0,75	41	2.260,00
ADPE NAUTIC 50	B	50 mm	230	400	1,15	50	2.580,00
ADPE NAUTIC 70	B	70 mm	500	400	5,50	110	6.100,00

## DIRTY SEWAGE 12 / 24V



**DIRTY SEWAGE 12 / 24V:** Self priming low voltage peristaltic pump, suitable to empty the black water tanks of the yachts and boats. Available with macerator on demand.

Artic.	Vers.	Ø	lt/min	V	kW	kg	€
DIRTY S 12	P	1" 1/2	24	12	6	5	On request
DIRTY S 24	P	1" 1/2	30	24	4	5	On request
DIRTY S 12 MAC	P	1" 1/2	24	12	6	8	On request
DIRTY S 24 MAC	P	1" 1/2	30	24	4	8	On request

## DRAINEX SEWAGE

**DRAINEX SEWAGE:** Electro-submersible sewage pumps to handle liquids with solid parts in suspension. Available in various materials: cost-iron, stainless steel and bronze on request.



Artic.	Vers.	Ø	lt/min	h	V	kW	kg	€
SUPER DRAINEX 75	AISI 304	1" 1/2	300	9,5 m	230	0,55	14	381,00
SUPER DRAINEX 100	AISI 304	1" 1/2	350	10 m	230	0,75	15	433,00
SUPER DRAINEX 150	AISI 304	1" 1/2	400	12,5 m	230	1,10	16	460,00
SUPER DRAINEX 200	AISI 304	2"	500	14 m	230	1,50	19	728,00
SUPER DRAINEX 300T	AISI 304	3"	800	15,5 m	400	2,20	22	770,00

Artic.	Vers.	Ø	lt/min	h	V	kW	kg	€
SUPER JOB 300T	G	3"	1000	20 m	400	2,2	46	1.122,00
SUPER JOB 500T	G	4"	1400	20 m	400	3,7	52	1.428,00

## WORKSITE SLUDGE

**WORKSITE SLUDGE:** Worksite submersible electric pump, ideal for water with mud, clay, sand and crushed stones.



Artic.	Vers.	Ø	lt/min	h	V	kW	kg	€
KDFU 65 NT	G	50 mm	45	21	400	1,5	32	3.3720,00
KDFU 80 NT	G	75 mm	60	26	400	3,0	43	3.820,00
KDFU 100 NT	G	110 mm	1400	26	400	3,0	48	4.300,00
KDFU 125 NT	G	110 mm	2250	31	400	10	90	6.690,00

## BALL VALVE

**BALL VALVE:** When the flow stops, the ball goes back into its housing and shut out the flow



Artic.	Vers.	Ø	kg	€
VALVOLA A PALLA 1	G	1"1/2	4,5	190,00
VALVOLA A PALLA 2	G	2"	5,5	200,00

## PUMPING STATIONS

**PUMPING STATIONS:** Pumping station that collect sewage liquids or clean waters, complete with submersible electopump made of cast iron or steel. TAVER versioni is for soapy fluids.



Artic.	Vers.	Ø	lt	Pass.solidi	lt/min	V	kW	€
TAVER60/1M	PP - GB	1"1/4	60	20 mm	10 – 140	230	0,28	On request
230DPA	PP - GB	2"	230	35 mm	10 – 140	230	0,53	On request
500BIG1,5P	PP - ACC	2"1/2	500	45 mm	30 – 366	230	1,1	On request
PD800/32D	PP - GB	2"x2"1/2	820	50 mm	24 – 408	M/T	0,75	On request
PD12004D	PP - GB	2"x2"1/2	1220	50 mm	30 – 405	M/T	1,1	On request
T15005D	PP - GB	2"x2"1/2	1500	50 mm	150 – 540	400	1,5	On request

## DRAIN – WATER / INOX

**DRAIN – WATER / INOX:** Electro-submersible drainage pump for clear water. Stainless steel body.



Artic.	Vers.	Ø	lt/min	h	V	kW	kg	€
DRENA 400	AISI 304	32 mm	110	7 m	230	0,40	7	184,00
DRENA 1.000	AISI 304	32 mm	210	11,5 m	230	1,00	8	231,00
SUPER DRAIN 75	AISI 304	1" 1/2	300	12,5 m	230	0,55	12	398,00
SUPER DRAIN 100	AISI 304	1" 1/2	350	15 m	230	0,75	14	442,00
SUPER DRAIN 150	AISI 304	2"	450	12,5 m	M/T	1,10	16	466,00
SUPER DRAIN 200	AISI 304	2"	500	14,5 m	M/T	1,50	19	742,00
SUPER DRAIN 300	AISI 304	3"	900	17,5 m	T	2,20	22	778,00

## SP 21

**SP 21 PUMPS:** compact and powerful submersible trash pump with cast iron hydraulic motor. The pump is ATEX approved and has been designed to pump in explosive environment



Artic.	Vers.	Ø	lt/min	h	Solid dim.	kg	€
SP 21	AISI 304	2"	850	35	3 cm	10,0	4.000,00

## XV PUMPS

**XV PUMPS:** Self-priming pumps with integrated electronic control and safety float against dry running. Water is collected where it is more clean.



Artic.	Vers.	Ø	lt/min	h	V	kW	kg	€
XV80P	AISI 304	1"	50	40	230	0,60	12,0	On request
XV100P	AISI 304	1"	60	47	230	0,75	12,5	On request
XV120P	AISI 304	1"	60	49	230	0,90	13,5	On request

## HYDRO PACK

**HYDRO PACK:** Self-priming booster for domestic and agricultural uses. Booster sets complete with water tank, automatic pressure set and gauge.



Artic.	Vers.	Tank	lt/min	bar	V	kW	kg	€
HP JET INOX 08	AISI 304	24 Lt	40	4,0	230	0,60	15	412,00
HP JET INOX 1	AISI 304	24 Lt	45	4,5	230	0,75	16	442,00



## PRESSOFLUS

**PRESSOFLUS:** Automatic electric pressure set.

Artic.	Vers.	Ø	bar	V	kW	kg	€
PRESSOFLUS	P	1"	1,5 - 10	230	10	1	114,00



## JET

**JET:** Self priming pump, ideal for water. Available with cast-iron or stainless steel body.

Artic.	Vers.	Ø	lt/min	h	V	kW	kg	€
JET 80 LM	G	1"	50	42 m	230	0,60	16	166,00
JET 100 LM	G	1"	60	45 m	230	0,75	17	190,00
JET 150 LMT	G	1" - 1" 1/4	150	45 m	400	1,10	20	310,00
JET 200 LMT	G	1" - 1" 1/4	150	47 m	400	1,50	36	340,00

Artic.	Vers.	Ø	lt/min	h	V	kW	kg	€
JET INOX 60	AISI 304	1"	40	35 m	230	0,37	7,0	235,00
JET INOX 100	AISI 304	1"	40	42 m	230	0,55	7,5	275,00
JET INOX 150	AISI 304	1"	40	45 m	230	0,75	8,5	357,00

## DOUBLE IMP

**DOUBLE IMP:** Centrifugal double impeller pump at high capacity.



Artic.	Vers.	Ø	lt/min	h	V	kW	kg	€
DOUBLE IMP 1	G	1" 1/4 x 1"	80	40 m	230	0,75	23	286,00
DOUBLE IMP 1,5	G	1"1/4 x 1"	120	45 m	230	1,10	24	369,00
DOUBLE IMP 2	G	1"1/4 x 1"	140	50 m	230	1,50	25	450,00
DOUBLE IMP 3	G	1"1/2 x 1"1/4	150	62 m	230	2,20	27	490,00
DOUBLE IMP 4	G	1"1/2 x 1"1/4	200	66 m	400	3,00	51	1.200,00
DOUBLE IMP 7,5	G	1"1/2 x 1"1/4	250	90 m	400	5,50	77	1.830,00

## WELL INOX

**WELL INOX:** Submersible multistage pump for 5" wells. Stainless Steel body and floating switch.



Artic.	Vers.	Ø	lt/min	h	V	kW	kg	€
SUBDRAIN 75/4	AISI 304	1" 1/4	110	44 m	230	0,55	14	458,00
SUBDRAIN 130/4	AISI 304	1" 1/4	110	57 m	230	0,75	16	503,00
SUBDRAIN 180/4	AISI 304	1" 1/4	110	64 m	230	0,90	17	555,00
SUBDRAIN 200/4	AISI 304	1" 1/4	110	77 m	230	1,10	18	584,00

## DEEP WELL INOX

**DEEP WELL INOX:** Submersible multistage pump for 3", 4", 6" and 8" wells. Stainless Steel body.



Artic.	Vers.	WELL	lt/min	h	V	kW	kg	€
WELL DRAIN D 75	AISI 304	3"	45	70 m	230	0,55	12	938,00
WELL DRAIN D 100	AISI 304	3"	45	90 m	230	0,75	14	1.070,00
WELL DRAIN D 150	AISI 304	3"	45	130 m	230	1,00	17	1.270,00

Artic.	Vers.	WELL	lt/min	h	V	kW	kg	€
WELL A 75	AISI 304	4"	75	40 m	230	0,55	13	670,00
WELL A 100	AISI 304	4"	75	86 m	230	1,1	19	985,00
WELL S 300	AISI 304	4"	150	116 m	400	2,2	24	1.130,00
WELL B 1000	AISI 304	4"	225	195 m	400	7,5	45	2.375,00
WELL 6 SC 1500	AISI 304	6"	600	119 m	400	11	111	4.327,00
WEEL 6 SD 2500	AISI 304	6"	1200	125 m	400	18,5	126	5.355,00
WELL 8 SC 3500	AISI 304	8"	2200	105 m	400	30	217	On request
WELL 8 SD 9000	AISI 304	8"	4000	169 m	400	66	340	On request
WELL 10 SC 12500	AISI 304	10"	5800	137 m	400	92	475	On request
WELL 10 SD 30000	AISI 304	10"	7000	230m	400	147	600	On request



## MOTOR BENZ

**MOTOR BENZ:** Self priming motor pump for clean water with four strokes engine (LWP 50 is mounted on trolley and suitable for medium sprinkler irrigation and for fire-fighting system).



Artic.	Vers.	Ø	lt/min	h	kW	kg	€
LWP 50 SET	AL	2"	300	30 m	4,80	39	1.320,00
MOTOR B 20 C	AL	2"	600	28 m	4,90	22	485,00
MOTOR B 30 C	AL	3"	1.000	26 m	5,20	25	527,00
MOTOR B 40 C	AL	4"	1.600	16 m	6,70	47	1.220,00

## SEMI – TRASH – BENZ

**SEMI – TRASH – BENZ:** Self priming motor pump for sewage and dirty waters, with four strokes gasoline engine.



Artic.	Vers.	Ø	lt/min	h	kW	kg	€
STB-B2 KQ - A	G	2"	500	20 m	3,70	37	1.677,00
STB-B3 KQ - A	G	3"	1.100	25 m	5,20	47	2.789,00
STB-B4 KQ - A	G	4"	1.700	15 m	6,60	71	3.120,00

## SEMI – TRASH – DIESEL

**SEMI – TRASH – DIESEL:** Self priming motor pump for sewage and dirty waters, with diesel engine.



Artic.	Vers.	Ø	lt/min	h	kW	kg	€
STD-B4KQ - A	G	4"	1.400	13 m	4,20	74	4.335,00
STD-G3TMK - A	G	3"	800	38 m	6,60	107	5.549,00
STD-B3XR - A	G	3"	1.425	30 m	10,30	94	9.100,00
STD-B4XR - A	G	4"	2.200	30 m	17,70	170	12.400,00
STD-B3ZPM - A	G	3"	1.200	68 m	17,70	170	12.295,00

## PERI – STAR



**PERI – STAR:** Self priming peristaltic electric pump available with engines of 230 V or 400 V. Suitable for transferring edible fluids, chemicals, liquid of high viscosity and with suspended materials. Available with single phase or three phases motors.

Artic.	Vers.	Ø	lt/min	bar	V	kW	kg	€
PERI-STAR 10	ACC	3/8"	1,8	10	M - T	0,18	19	On request
PERI-STAR 15	ACC	3/4"	5,6	10	M - T	0,18	20	On request
PERI-STAR 25	ACC	1"	26	8	M - T	0,37	48	On request
PERI-STAR 32	ACC	1" 1/4	48	6	M - T	1,10	84	On request
PERI-STAR 50	ACC	2"	178	6	M - T	2,20	185	On request

## POWER PLUS



**POWER PLUS:** Decalcifying pump for cleansing use.

Artic.	Vers.	Ø	lt/min	V	Kw	kg	€
POWER 20	P	17 mm	40	230	0,12	7,0	On request
POWER 20 PL	P	17 mm	40	230	0,18	7,0	On request
POWER 30	P	27 mm	90	230	0,25	9,5	On request

## DESMODUS

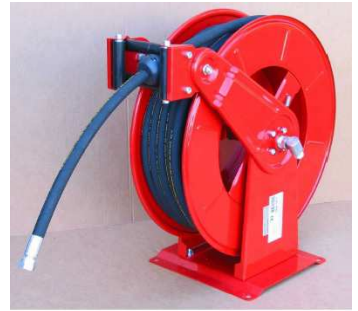


**DESMODUS:** Air operated pump, ideal for emptying the tanks of the machine tools. Single action and self priming. It works also with dirty fluid and diesel. The barrel shown is not supplied.

Artic.	Vers.	Ø	lt/min	V	€
DESMODUS	ACC	1"	20	7	900,00

## HOSE REEL

**HOSE REEL:** Spring driven hose-reel adjustable arms series, equipped with hose. Red painted steel.



Artic.	Vers.	Ø	Lungh	kg	€
HOSE REEL S	ACC	1/2"	10 m	13	470,00
HOSE REEL M	ACC	3/4"	7 m	18	527,00
HOSE REEL L	ACC	3/4"	15 m	21	740,00
HOSE REEL XL	ACC	1"	14 m	22	934,00

## SUPER MIX

**SUPER MIX:** Ideal to blend mineral or synthetic oil with water. Equipped with a valve to adjust the concentration.



Artic.	Vers.	Ø	lt/min	lt	kg	€
MIXI 15	ACC	12 mm	1	5 – 12	6	414,00

## SPECOLA INOX

**SPECOLA INOX:** Flow indicator for wine and edible liquids. Available in various size and connections.



Artic.	Vers.	Ø	bar	kg	€
SPECOLA INOX	AISI 304	3/4"	1,5	0.55	On request

## FILTRO SEP

**FILTRO SEP.:** Spin-on cartridge line filter to separate water – diesel oil, do not use for BIODIESEL.



Artic.	Vers.	Ø	Micron	lt/min	bar	kg	€
FILTRO SEP	AL	1"	30	70	4	1,0	52,00
FILTRO SEP 100	AL	1"	30	100	4	1,2	125,00

## VISPA 1 - C

**VISPA 1-C:** Flow indicator made of bronze. Single tempered glass; available with ball inside (on request).

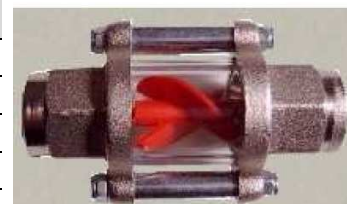
Artic.	Vers.	Ø	bar	kg	€
VISPA 1C - 00	B	3/8"	16	0,8	94,00
VISPA 1C - 0	B	1/2"	16	0,7	94,00
VISPA 1C - 1	B	3/4"	16	0,8	105,00
VISPA 1C - 2	B	1"	16	1,0	113,00



## VISPA SCF

**VISPA SCF:** Flow indicator made of a brass-zinc plated alloy, reversible helix and maximum temperature 90 ° C.

Artic.	Vers.	Ø	bar	lt/min	€
VISPA SCF13	B	1/4"	30	0,6 – 3	On request
VISPA SCF16	B	3/8"	30	1,1 – 5,5	On request
VISPA SCF20	B	1/2"	30	1,3 – 6,3	On request
VISPA SCF26	B	3/4"	30	1,6 – 17	On request
VISPA SCF33	B	1"	30	2,2 – 27	On request
VISPA SCF42	B	1" 1/4	30	9 – 55	On request
VISPA SCF48	B	1" 1/2	15	11 – 60	On request



## AUTOMATIC BARREL TAP

**AUTOMATIC BARREL TAP:** Self closing drum faucet. Automatic closure.

Artic.	Vers.	Ø	lt	kg	€
ABT B	B	3/4"	60 - 200	0,50	84,00
ABT SS	AISI 304	3/4"	60 - 200	0,50	160,00



## BARRELTAP

**BARREL TAP:** Polypropylene drum faucet, available in two sizes.

Artic.	Vers.	Ø	lt	kg	€
BT / P 1	P	3/4"	60 - 200	0,1	27,00
BT / P 5	P	2"	200	0,5	62,00



## DENSO TAP

**DENSO TAP:** Discharge faucet for liquids of high viscosity. Available in bronze or cast iron.

Artic.	Vers.	Ø	bar	kg	€
DENSO TAP 1	B	3/4"	16	2,0	On request
DENSO TAP 7	B	2"	16	2,2	On request
DENSO TAP 9	G	2" 1/2	16	2,8	On request
DENSO TAP 10	G	3"	16	3,5	On request
DENSO TAP 13	G	4"	16	5,0	On request



## RE / A

**RE/A:** Manual transfer nozzle for industrial applications, diesel and light oil.



Artic.	Vers.	Ø	lt/min	kg	€
RE/A 1	AL	3/4"	80	0,7	29,80
RE/A 2	AL	1"	80	0,7	29,80
RE/A 1 – be	AL be	3/4"	80	0,7	57,00
RE/A 2 – be	AL be	1"	80	0,7	57,00
RE/A 280	AL	1" 1/2	280	2,0	107,00



## RE / PTFE

**RE/PTFE:** Transfer nozzle with PTFE seals. Available in bronze or cast-alloy body.

Artic.	Vers.	Ø	lt/min	kg	€
RE/A PTFE	AL PTFE	1"	80	1	245,00
RE/B PTFE	B PTFE	1"	80	2	622,00



## RE / SOLV

**RE/SOLV:** Manual nozzle for solvent or fuel transfer. Body in bronze or cast-alloy. High flow.

Artic.	Vers.	Ø	lt/min	kg	€
RE/S A - be 150	AL be	1" 1/2	150	3	333,00
RE/S A - PTFE 100	AL PTFE	1" 1/2	100	3	365,00
RE/S B - be 100	B be	1" 1/2	100	7	918,00
RE/S B - PTFE 100	B PTFE	1" 1/2	100	10	On request
RE/S A - PTFE 250	AL PTFE	2"	250	9	490,00
RE/S A - PTFE 300	AL PTFE	2"	300	9	673,00

## RE / AUT

**RE/AUT:** Nozzle with automatic shut-off, with swivel, ideal for diesel. Stainless Steel version for AD-BLUE.



Artic.	Vers.	Ø	lt/min	kg	€
RE/AUT 60	AL	1"	60	1,3	116,00
RE/AUT 80	AL	1"	80	1,5	145,00
RE/AUT 120	AL	1"	120	1,8	302,00
RE/AUT-UREA	AISI 316	3/4"	40	2,5	400,00
RE/AUT - be	AL	3/4"	50	2,5	205,00



## RE / AUT DIGIT

**RE/AUT DIGIT:** Automatic fuel nozzle with electronic flow meter 5 digits partial and 7 total, precision +/- 3%. Pressure: 0,5 – 3 bar. Not for gasoline.

Artic.	Vers.	Ø	lt/min	kg	€
RE/AUT DIGIT	AL	1"	60	1,4	215,00

## RE / P



**RE/P:** Manual plastic transfer nozzle for industrial, chemical and edible liquids. Available in two versions: black for industrial uses (P), white in a non toxic version (P AT) and for AdBlue (SPECIAL).

Artic.	Vers.	Ø	lt/min	kg	€
RE/P 0	P	13 mm	85	0,3	16,50
RE/P 1	P	20 mm	90	0,3	16,50
RE/P 2	P	25 mm	95	0,3	16,50
RE/P – AT 0	P – AT	13 mm	85	0,3	28,80
RE/P – AT 1	P – AT	20 mm	90	0,3	28,80
RE/P – AT 2	P – AT	25 mm	95	0,3	28,80
RE MAN SPECIAL 1	PP – INOX	20 mm	90	0,5	60,00
RE MAN SPECIAL 2	PP – INOX	25 mm	95	0,5	60,00

## RE / PVDF



**RE/PVDF:** Manual plastic transfer nozzle for industrial, chemical and aggressive liquids.

Artic.	Vers.	Ø	lt/min	kg	€
RE/PVDF 1	PVDF	19 mm	65	0,3	350,00
RE/PVDF 2	PVDF	25 mm	65	0,3	350,00

## RE / GPL



**RE/GPL:** Nozzle for LPG.

Artic.	Vers.	Ø	lt/min	kg	€
RE/GPL	ACC	1"	40	3,0	On demand

## RE / OIL



**RE/OIL:** Manual nozzle for lubricating oil. Rigid delivery hose.

Artic.	Vers.	Ø	lt/min	kg	€
RE/OIL	AL	1/2"	20	1	54,00

## RE / GREASE



**RE/GREASE:** Manual nozzle for grease.

Artic.	Vers.	Ø	lt/min	kg	€
RE/GREASE	ACC	1/2"	2	1,3	63,50

## RE / INOX



**RE/INOX:** Manual stainless steel transfer nozzle for edible liquids and chemicals.

Artic.	Vers.	Ø	lt/min	kg	€
RE/INOX TNSS	AISI 304 - PTFE	3/4"	40	2,0	308,00

## RE / INOX - PTFE



**RE/INOX - PTFE:** Manual stainless steel transfer nozzle for filling or emptying containers.

Artic.	Vers.	Ø	lt/min	kg	€
RE/INOX PTFE 1	AISI 316 L	25	24	1,3	1.100,00
RE/INOX PTFE 2	AISI 316 L	38	58	2,2	1.100,00

## RE / ENO

RE/ENO: Manual stainless steel transfer nozzle for wine and edible liquids.



Artic.	Vers.	Ø	lt/min	kg	€
RE/ENO	AISI 304	20 mm	65	0,5	220,00

## RE / ENO – FILL / AUT

RE/ENO – FILL/AUT: Motorized gun for fill (RE/ENO - FILL/AUT) or empty (RE/ENO – EMPTY) barrel with automatic lever tap. Equipped of electronic system to stop the pump when the wine into the barrel has reached the predetermined level. On demand this system can be integrated with a remote control.



Artic.	Vers.	Ø	lt/min	Lt	kg	€
RE/ENO - FILL/AUT	AISI	15 mm	210	225-300-400-500	6,0	1.610,00
RE/ENO - EMPTY	AISI	15 mm	210	225-300-400-500	6,0	2.828,00

## RE / DIGITOX

RE/DIGITOX: Digital meter complete with nozzle and spout. Available in two versions: for industrial oil (OIL) or for food products (FOOD) with non-toxic materials.



Artic.	Vers.	Ø	lt/min	bar	kg	€
RE/DIGITOX - OIL	AL	1/2"	20	0,5 - 60	1,6	320,00
RE/DIGITOX - FOOD	AL – P AT	1/2"	20	0,5 - 60	1,6	376,00



## RE / DIGIT PRED



**RE/DIGIT OIL PRED:** Manually operated nozzle with preset digital meter, for lubricants. Ideal to predetermine the batches of fluid to be dispensed.

Artic.	Vers.	Ø	lt/min	bar	kg	€
RE/DIGIT PRED	AL	1/2"	20	40	1,3	640,00

## RE / DIGIT GREASE PRED



**RE/DIGIT GREASE PRED:** Digital gears meter with preset for grease. Ideal to predetermine the batches of grease to be dispensed. It measures kg/min.

Artic.	Vers.	Ø	kg/min	bar	kg	€
RE/DG PRED 2	AL	1/4"	2	300	1,7	728,00

## REFRACTOMETER

**REFRACTOMETER:** The optical refractometers can detect the concentration of the product in water, to be used with SUPER MIX. On request also digital refractometer.



Artic.	Vers.	Precisione	Campo di misura	kg	€
MIXI R10	ACC	+/- 0,1%	0 – 10 %	0,5	114,00
MIXI R18	ACC	+/- 0,2%	0 – 18 %	0,5	114,00
MIXI R 32	ACC	+/- 0,2%	0 – 32 %	0,5	114,00

## FM FLOW METER

**FM FLOW METER:** Mechanical flow meter made of aluminium, suitable for diesel and low viscosity lubricants. 360° rotation of the dial to install it in any position on above ground tanks or cisterns. Accuracy +/- 1%. Available with 3 or 4 digits.



Artic.	Vers.	Ø	lt/min	bar	kg	€
FM3	AL	1"	20 – 120	3,5	2,0	290,00
FM4	AL	1"	20 – 120	3,5	2,0	336,00

## ADF FLOW METER

**ADF FLOW METER:** Flow meter with oval gears, are not influenced by liquid viscosity and are resistant up to temperatures of 120 °C. Accuracy + / - 1% and + / - 0.5%, available in different size, construction material and accessories. Totalizer is conforming to ATEX standard.



Artic.	Vers.	Ø	Temp	lt/min	bar	€
ADF001	AISI 316	1/4"	120°C	2 – 100	34	On request
ADF002	AISI 316	3/8"	120°C	15 – 550	34	On request
ADF004	AISI 316	1/2"	120°C	1 – 40	100	On request
ADF007	RYTON	1"	80°C	10 – 150	5	On request
ADF010	AISI 316	1"	120°C	10 – 150	100	On request
ADF040	AISI 316	1" 1/2	120°C	15 – 250	100	On request

## WOLTMANN WEI

**WOLTAMANN WEI:** WEI Woltmann meter for not filtered water, at free passage, for irrigation, designed for use with irrigation water, not filtered water, even with small suspended particles, directly from reservoir, canals, rivers and artesian wells.



Artic.	Vers.	DN	lt/min	Lungh.	kg	€
G2 – 65	G	65	1.000	200 mm	12	255,00
G2 – 80	G	80	1.000	225 mm	14	275,00

## BM-K 44

**BM - K 44:** Mechanical flow-meter for non-retail use only. Accuracy +/- 1%. Suitable for diesel, gasoline and kerosene, also available the special version for lubricating oil (OIL).

Artic.	Vers.	Ø	lt/min	bar	kg	€
K33 ATEX	AL	1"	20 / 120	3,5	1,0	276,00
BM K 44 OIL	AL	1"	20 / 120	3,5	2,5	241,00



## CT 80 INOX

**CT 80 INOX:** Mechanical flow-meter for non-retail use only with fittings and internal parts in Stainless Steel and Viton seals. Ideal for AD-BLUE, chemicals and food products.

Artic.	Vers.	Ø	lt/min	bar	kg	€
CT 80 INOX	P – AISI 304	1"	20 / 80	3,5	2,0	400,00



## CO-MINI

**CO-MINI:** Mechanical Diesel-Oil Burner Meter. Accuracy +/- 1%.

Artic.	Vers.	Ø	lt/h	bar	kg	€
CO - MINI 40	OT	1/8"	0,7/80	25	0,3	On request



## BIG FLOW

**BIG FLOW:** Mechanical flow-meter for measuring fuel. Accuracy +/- 0.3%. conforming to Metric Italian Register.

Artic.	Vers.	Ø	lt/min	bar	kg	€
BIG N 5	AL	1" 1/2	25 / 250	10	26	6.020,00
BIG N 7	AL	2"	50 / 500	10	30	6.210,00
BIG N 15	AL	3"	100 / 1.000	10	38	8.000,00
BIG N 30	AL	4"	170 / 1.700	10	50	12.050,00



## LAMBDA H<sub>2</sub>O

**LAMBDA H<sub>2</sub>O:** Mechanical flow-meter for water. Available with automatic drive to connect to an electric valve.

Artic.	Vers.	Ø	lt/min	bar	kg	€
LAMBDA 2	OT	1"	65	10	3,0	490,00
LAMBDA 5	OT	1" 1/2	165	10	3,0	540,00
LAMBDA 7	OT	2"	250	10	3,5	570,00



## CHEM FLOW

**CHEM FLOW:** Battery powered digital meter, PVDF body. Ideal for chemical and aggressive fluids.

Artic.	Vers.	Ø	lt/min	bar	kg	€
CHEM FLOW	P	1"	20 / 120	10	0,3	1.091,00



## PUROIL

**PUROIL:** Digital flow meter for controlling the dispensing and distribution of oil. Lightweight, compact, it is not suitable for decanting gravity.

Artic.	Vers.	Ø	lt/min	bar	kg	€
PUROIL	AL	1/2"	1 – 30	10	0,80	175,00



## PUROX

**PUROX:** Digital flow meter with oval gears, non toxic type. Ideal for food liquids.

Artic.	Vers.	Ø	lt/min	bar	kg	€
PUROX	P - AT	1/2"	0,5 – 60	20	0,50	325,00
K24	PP	1"	6 – 100	10	1,00	240,00



## PONY FLOW

**PONY FLOW:** Electronic digital flow-meter, with male connections (9 V battery). Accuracy +/- 1%. Two versions are available: with Nylon (PF N) body or Stainless Steel AISI 316 (PF I) body.

Artic.	Vers.	DN	Ø	lt/min	bar	kg	€
PF N 0	P	15 mm	1"	3 / 30	20	0,36	805,00
PF N 1	P	20 mm	1"	7 / 70	20	0,36	849,00
PF N 2	P	25 mm	1" 1/4	10 / 100	20	0,45	913,00
PF N 5	P	40 mm	1" 1/2	35 / 350	20	0,47	981,00
PF N 7	P	50 mm	2"	75 / 750	20	0,60	1.066,00
PF N 10	P	80 mm	3"	150 / 1.500	20	2,30	1.416,00
PF N 13	P	100 mm	4"	300 / 3.000	20	3,00	1.739,00

Artic.	Vers.	DN	Ø	lt/min	bar	kg	€
PF I 0	AISI 316	15 mm	1"	3 / 30	40	0,76	1.045,00
PF I 1	AISI 316	20 mm	1"	7 / 70	40	0,76	1.090,00
PF I 2	AISI 316	25 mm	1" 1/4	10 / 100	40	1,50	1.178,00
PF I 5	AISI 316	40 mm	1" 1/2	35 / 350	40	1,20	1.296,00
PF I 7	AISI 316	50 mm	2"	75 / 750	40	1,70	1.532,00
PF I 10	AISI 316	80 mm	3"	150 / 1.500	40	4,30	1.740,00
PF I 13	AISI 316	100 mm	4"	300 / 3.000	40	6,10	2.218,00
PF I 15	AISI 316	5"	5"	450 / 4500	60	8,00	On request



## PONY FLOW CABLE

**PONY FLOW CABLE:** Electronic digital flow-meter, with male connections (12 V DC) Ideal to predetermine the liquid to be dispensed, cable version remote display. Accuracy +/- 1%. Two versions are available: with Nylon (PF C N) body or Stainless Steel AISI 316 (PF C I) body.

Artic.	Vers.	DN	Ø	lt/min	bar	kg	€
PF C N MINI 1	P	13 mm	1/4"	0,3 / 6	20	0,3	810,00
PF C N MINI 2	P	13 mm	1/4"	1 / 20	20	0,3	810,00
PF C N 0	P	15 mm	1"	3 / 30	20	0,3	1.221,00
PF C N 1	P	20 mm	1"	7 / 70	20	0,6	1.284,00
PF C N 2	P	25 mm	1" 1/4	10 / 100	20	0,7	1.335,00
PF C N 5	P	40 mm	1" 1/2	35 / 350	20	0,7	1.387,00
PF C N 7	P	50 mm	2"	75 / 750	20	0,8	1.449,00
PF C N 10	P	65 mm	3"	150 / 1.500	20	2,5	1.780,00
PF C N 13	P	80 mm	4"	300 / 3.000	20	3,2	2.070,00

Artic.	Vers.	DN	Ø	lt/min	bar	kg	€
PF C I 0	AISI 316	15 mm	1"	3 / 30	40	1,0	1.418,00
PF C I 1	AISI 316	20 mm	1"	7 / 70	40	1,0	1.460,00
PF C I 2	AISI 316	25 mm	1" 1/4	10 / 100	40	1,7	1.542,00
PF C I 5	AISI 316	40 mm	1" 1/2	35 / 350	40	1,8	1.656,00
PF C I 7	AISI 316	50 mm	2"	75 / 750	40	1,9	1.946,00
PF C I 10	AISI 316	65 mm	3"	150 / 1.500	40	4,5	2.174,00
PF C I 13	AISI 316	80 mm	4"	300 / 3.000	40	6,3	2.587,00



## PONY FLOW PRED

**PONY FLOW PRED:** Electronic digital flow-meter (12 V DC) with male connections. Cable version remote display. Accuracy +/- 1%. Two versions are available: with Nylon (PF PLUS 4N) body or Stainless steel (PF PLUS 4I) body.

Artic.	Vers.	DN	Ø	lt/min	bar	kg	€
PF PLUS 4N 0	P	15 mm	1"	3 / 30	20	0,3	1.594,00
PF PLUS 4N 1	P	20 mm	1"	7 / 70	20	0,6	1.646,00
PF PLUS 4N 2	P	25 mm	1" 1/4	10 / 100	20	0,7	1.687,00
PF PLUS 4N 5	P	40 mm	1" 1/2	35 / 350	20	0,7	1.780,00
PF PLUS 4N 7	P	50 mm	2"	75 / 750	20	0,8	1.915,00
PF PLUS 4N 10	P	65 mm	3"	150 / 1.500	20	2,5	2.142,00
PF PLUS 4N 13	P	80 mm	4"	300 / 3.000	20	3,2	2.484,00

Artic.	Vers.	DN	Ø	lt/min	bar	kg	€
PF PLUS 4I 0	AISI 316	15 mm	1"	3 / 30	40	1,0	1.800,00
PF PLUS 4I 1	AISI 316	20 mm	1"	7 / 70	40	1,0	1.853,00
PF PLUS 4I 2	AISI 316	25 mm	1" 1/4	10 / 100	40	1,7	1.915,00
PF PLUS 4I 5	AISI 316	40 mm	1" 1/2	35 / 350	40	1,8	2.029,00
PF PLUS 4I 7	AISI 316	50 mm	2"	75 / 750	40	1,9	2.329,00
PF PLUS 4I 10	AISI 316	65 mm	3"	150 / 1.500	40	4,5	2.588,00
PF PLUS 4I 13	AISI 316	80 mm	4"	300 / 3.000	40	6,3	3.002,00



## PRO FLOW

**PRO FLOW:** 12V digital flow-meter with programmable stop. When reaching the set value automatically closes a built in butterfly valve.

Artic.	Vers.	Ø	lt/min	bar	kg	€
PRO FLOW 5	P	1" 1/2	35 / 350	8	4	2.060,00
PRO FLOW 7	P	2"	75 / 750	8	5	2.153,00
PRO FLOW 9	P	2" 1/2	100 / 1.000	8	6	2.350,00



## MAGNETIC FLOW

**MAGNETIC FLOW:** 12V powered magnetic induction flow meter, complete with power pack and cable. Without internal moving parts. Suitable for all water based liquids, also with suspended materials.

Artic.	Vers.	Ø	DN	lt/min	bar	kg	€
MF 0000	P	3/4"	6 mm	1 - 20	40	1,0	1.366,00
MF 0	P	1"	15 mm	5 - 100	40	1,1	1.449,00
MF 2	P	1" 1/4	25 mm	10 - 200	40	1,2	1.511,00
MF 5	P	1" 1/2	40 mm	20 - 400	20	2,0	1.615,00
MF 7	P	2"	50 mm	30 - 600	20	3,0	1.780,00



## MAGNETIC FLOW CABLE

**MAGNETIC FLOW CABLE:** 12V powered magnetic induction flow meter, complete with power pack and cable length 1,3 meters, remote display. Without internal moving parts. Suitable for all water base liquids, also with suspended materials.



Artic.	Vers.	Ø	DN	lt/min	bar	kg	€
MFC 0000	P	1/4"	10 mm	1 - 15	50	1,5	1.449,00
MFC 0	P	1/2"	15 mm	3 - 60	50	1,6	1.542,00
MFC 2	P	1"	25 mm	10 - 200	50	1,8	1.687,00
MFC 5	P	1" 1/2	40 mm	20 - 400	40	2,5	1.811,00
MFC 7	P	2"	50 mm	45 - 900	20	3,5	1.966,00

## K24 UREA

**K24 UREA:** Digital flow meter, easy to install (even directly on the nozzle). The display can be rotated in 4 different positions to facilitate the reading. Suitable for urea, antifreeze and windscreen liquid.



Artic.	Vers.	Ø	lt/min	bar	kg	€
K24	PP	1"	6 – 100	10	1,0	240,00
K24 ATEX	AL	1"	7 – 120	20	1,0	386,00

## UKT FLOW

**UKT FLOW:** Digital flow meter made of stainless steel with LCD display. Accuracy +/- 1%. Weather-resistant for a long time, Suitable for urea and antifreeze.



Artic.	Vers.	Ø	lt/min	bar	kg	€
UKT FLOW	INOX	1/2"	1 – 40	3,5	2,0	186,00

## FLOW METERS TAX PURPOSES

**FLOW METERS TAX PURPOSES:** Volumetric blades meter type with built-in-air separator and volumetric calculator. Certificated MID. Accuracy +/- 5‰



Artic.	Vers.	lt/min	bar	€
MA300	AL – ACC	30 – 300	4	6.100,00
MA500	AL – ACC	50 – 500	4	7.215,00
MA800	AL – ACC	80 – 800	4	8.850,00

# ROMA

**ROMA:** Unidirectional check valve made of brass (ROMA OT) or Stainless steel (ROMA I). AISI 304 version has FPM (Viton) seals and AISI 316 has PTFE (Teflon) seals.

Artic.	Vers.	Ø	lt/min	kg	€
ROMA OT 0	OT	1/2"	70	0,115	9,80
ROMA OT 1	OT	3/4"	120	0,150	12,00
ROMA OT 2	OT	1"	200	0,200	15,00
ROMA OT 3	OT	1" 1/4	420	0,350	22,00
ROMA OT 5	OT	1" 1/2	630	0,400	28,80
ROMA OT 7	OT	2"	840	0,700	41,00



Artic.	Vers.	Ø	lt/min	kg	€
ROMA I 0	AISI 304	1/2"	70	0,115	41,80
ROMA I 1	AISI 304	3/4"	120	0,150	43,80
ROMA I 2	AISI 304	1"	200	0,200	50,00
ROMA I 3	AISI 304	1" 1/4	420	0,350	66,00
ROMA I 5	AISI 304	1" 1/2	630	0,400	79,50
ROMA I 7	AISI 304	2"	840	0,700	142,80

Artic.	Vers.	Ø	lt/min	kg	€
ROMA I 0	AISI 316	1/2"	70	0,115	48,00
ROMA I 1	AISI 316	3/4"	120	0,150	69,00
ROMA I 2	AISI 316	1"	200	0,200	74,00
ROMA I 3	AISI 316	1" 1/4	420	0,350	98,00
ROMA I 5	AISI 316	1" 1/2	630	0,400	114,00
ROMA I 7	AISI 316	2"	840	0,700	190,00

## FOOT VALVE:



**FOOT VALVE:** Foot valve made of brass with stainless steel filter.

Artic.	Vers.	Ø	lt/min	kg	€
VF OT 0	OT	1/2"	70	0,115	13,30
VF OT 1	OT	3/4"	120	0,150	16,50
VF OT 2	OT	1"	200	0,200	20,40
VF OT 3	OT	1" 1/4	420	0,350	28,50
VF OT 5	OT	1" 1/2	630	0,400	37,70
VF OT 7	OT	2"	840	0,700	51,00



## FOOT VALVE INOX

**FOOT VALVE INOX:** Foot valve made of stainless steel AISI 304 with FPM (Viton) seals or AISI 316 with PTFE (Teflon) seals. Both versions are equipped with stainless steel filter.



Artic.	Vers.	Ø	lt/min	kg	€
VF I 0	AISI 304	1/2"	70	0,115	56,00
VF I 1	AISI 304	3/4"	120	0,150	60,10
VF I 2	AISI 304	1"	200	0,200	67,30
VF I 3	AISI 304	1" 1/4	420	0,350	85,60
VF I 5	AISI 304	1" 1/2	630	0,400	101,90
VF I 7	AISI 304	2"	840	0,700	171,30

Artic.	Vers.	Ø	lt/min	kg	€
VF I 0	AISI 316	1/2"	70	0,115	63,00
VF I 1	AISI 316	3/4"	120	0,150	81,00
VF I 2	AISI 316	1"	200	0,200	88,00
VF I 3	AISI 316	1" 1/4	420	0,350	113,00
VF I 5	AISI 316	1" 1/2	630	0,400	135,00
VF I 7	AISI 316	2"	840	0,700	223,00

## FILTRO

**FILTRO:** Stainless steel strainer for foot valves. Available stainless steel AISI 304 or AISI 316 versions (FIL I), or with plastic thread (FIL P I).



Artic.	Vers.	Ø	kg	€
FIL P I 0	P – AISI 304	1/2"	0,30	4,10
FIL P I 1	P – AISI 304	3/4"	0,35	5,10
FIL P I 2	P – AISI 304	1"	0,50	6,60
FIL P I 3	P – AISI 304	1" 1/4	0,65	8,00
FIL P I 5	P – AISI 304	1" 1/2	0,75	10,20
FIL P I 7	P – AISI 304	2"	1,10	13,70

Artic.	Vers.	Ø	kg	€
FIL I 0	AISI 304	1/2"	0,30	10,70
FIL I 1	AISI 304	3/4"	0,35	11,80
FIL I 2	AISI 304	1"	0,50	14,00
FIL I 3	AISI 304	1" 1/4	0,65	15,20
FIL I 5	AISI 304	1" 1/2	0,75	19,30
FIL I 7	AISI 304	2"	1,10	24,50

Artic.	Vers.	Ø	kg	€
FIL I 0	AISI 316	1/2"	0,30	13,00
FIL I 1	AISI 316	3/4"	0,35	15,00
FIL I 2	AISI 316	1"	0,50	17,00
FIL I 3	AISI 316	1" 1/4	0,65	18,30
FIL I 5	AISI 316	1" 1/2	0,75	23,00
FIL I 7	AISI 316	2"	1,10	30,00

## QUICK R.C.

**QUICK R.C:** Quick-release ball bearing push-pull type ISO B. Available in zinc-plated steel (QUICK ACC) or AISI 316 (QUICK I) stainless steel.



Artic.	Vers.	Ø	lt/min	bar	kg	€
QUICK ACC 00	ACC	3/8"	20	250	0,4	20,00
QUICK ACC 0	ACC	1/2"	45	250	0,4	24,00
QUICK ACC 1	ACC	3/4"	90	250	0,5	37,70
QUICK ACC 2	ACC	1"	150	200	1,0	60,00
QUICK ACC 3	ACC	1" 1/4	450	140	1,5	103,00
QUICK ACC 5	ACC	1" 1/2	780	90	4,5	122,00
QUICK ACC 7	ACC	2"	780	90	8,5	345,00

Artic.	Vers.	Ø	lt/min	bar	kg	€
QUICK I 00	AISI 316	3/8"	20	250	0,4	140,00
QUICK I 0	AISI 316	1/2"	45	250	0,4	161,00
QUICK I 1	AISI 316	3/4"	90	250	0,5	248,00
QUICK I 2	AISI 316	1"	150	200	1,0	332,00
QUICK I 3	AISI 316	1" 1/4	450	140	1,5	675,00
QUICK I 5	AISI 316	1" 1/2	780	90	4,5	806,00
QUICK I 7	AISI 316	2"	780	90	8,5	1.570,00

## PTG 3 C

**PTG 3 C:** Three parts curved brass hose connection.



Artic.	Vers.	Ø	lt/min	kg	€
PTG 3 C 0	OT	1/2" x 18	90	0,13	10,00
PTG 3 C 1	OT	3/4" x 20	180	0,16	12,30
PTG 3 C 2	OT	1" x 25	300	0,24	14,00
PTG 3 C 3	OT	1"1/4 x 30	900	0,40	17,40
PTG 3 C 5	OT	1"1/2 x 45	1.600	1,10	29,60
PTG 3 C 7	OT	2" x 60	2.000	1,40	64,70

## PTG 1 D

**PTG 1 D:** Straight hose brass connection.



Artic.	Vers.	Ø	lt/min	kg	€
PTG 1 D 00	OT	3/8" x 15	40	0,10	4,50
PTG 1 D 0	OT	1/2" x 18	90	0,10	6,60
PTG 1 D 1	OT	3/4" x 20	180	0,11	8,50
PTG 1 D 2	OT	1" x 25	300	0,17	10,30
PTG 1 D 3	OT	1"1/4 x 30	900	0,30	13,40
PTG 1 D 5	OT	1"1/2 x 45	1.600	0,80	22,00
PTG 1 D 7	OT	2" x 60	2.000	1,00	50,00

## RD

**RD:** Bronze pressure reducing valve, for water, with connection threaded for gauge diameter 1/4".

Artic.	Vers.	Ø	PN	kg	€
RD 1/2"	B	1/2"	25	1,25	111,40
RD 3/4"	B	3/4"	25	1,75	140,10
RD 1"	B	1"	25	2,70	201,90
RD 1" 1/4	B	1" 1/4	25	4,80	487,90
RD 1" 1/2	B	1" 1/2	25	6,50	494,90
RD 2"	B	2"	25	9,80	700,40



## P.M.

**P.M.:** Pressure gauge tap with hole threaded diameter 1/4".

Artic.	Vers.	Ø	lt	kg	€
PM 1/2"	B	1/2" x 1/4"	45	0,15	14,00
PM 3/4"	B	3/4" x 1/4"	45	0,20	17,00
PM 1"	B	1" x 1/4"	45	0,25	20,00
PM 1" 1/4	B	1"1/4 x 1/4"	40	0,30	33,00
PM 1" 1/2	B	1"1/2 x 1/4"	40	0,35	38,00
PM 2"	B	2" x 1/4"	35	0,40	60,00



## RD BOC

**RD BOC:** Brass pressure reducing valve, with hose-clip male connections. Outlet gauge connections 1/4" on both sides.

\* inlet and outlet ports female threaded.

Artic.	Vers.	Ø	lt	kg	€
RD BOC 3/8"	OT	3/8"	25	1,0	* 30,60
RD BOC 1/2"	OT	1/2"	25	1,1	41,00
RD BOC 3/4"	OT	3/4"	25	1,8	59,00
RD BOC 1"	OT	1"	25	2,0	69,00
RD BOC 1" 1/4	OT	1" 1/4	25	3,6	93,00
RD BOC 1" 1/2	OT	1" 1/2	25	4,0	111,00
RD BOC 2"	OT	2"	25	6,0	184,00
RD BOC 2" 1/2	OT	2" 1/2	25	8,0	* 219,00
RD BOC 3"	OT	3"	25	10,0	* 296,00
RD BOC 4"	OT	4"	25	15,0	* 765,00



## RD INOX

**RD INOX:** Pressure reducer valve in AISI 316 L with compensation chamber. Built in stainless steel, with outlet gauge connection. Available with two working pressures: 40 bar (PN 40) or 64 bar (PN 64).

Artic.	Vers.	Ø	bar	kg	€
RD INOX 1" – 40	AISI 316	1"	30	2,4	On request
RD INOX 1"1/2 – 40	AISI 316	1" 1/2	30	4,3	On request
RD INOX 2" – 40	AISI 316	2"	30	5,0	On request

Artic.	Vers.	Ø	bar	kg	€
RD INOX 1" – 64	AISI 316	1"	50	2,4	On request
RD INOX 1"1/2 – 64	AISI 316	1" 1/2	50	4,3	On request
RD INOX 2" – 64	AISI 316	2"	50	5,0	On request



## RD FLA

**RD FLA:** Cast-iron pressure reducing valve with flanges.

Artic.	Vers.	Ø	bar	kg	€
RD FLA 65	G	65 mm	40	28	1.480,00
RD FLA 80	G	80 mm	40	40	2.050,00
RD FLA 100	G	100 mm	40	80	3.500,00
RD FLA 125	G	125 mm	40	81	3.770,00
RD FLA 150	G	150 mm	40	260	11.620,00



# SERPENTINA

**SERPENTINA:** Coil for pressure-gauge. Available in Stainless Steel, Copper and Steel.



Artic.	Vers.	Ø	bar	kg	€
SERP I 1/4" AISI 304	AISI 304	1/4"	260	0,10	35,00
SERP I 3/8" AISI 304	AISI 304	3/8"	260	0,20	37,30
SERP I 1/2" AISI 304	AISI 304	1/2"	260	0,24	43,00

Artic.	Vers.	Ø	bar	Kg	€
SERP I 1/4" AISI 316	AISI 316	1/4"	260	0,10	42,70
SERP I 3/8" AISI 316	AISI 316	3/8"	260	0,20	58,00
SERP I 1/2" AISI 316	AISI 316	1/2"	260	0,24	54,00

Artic.	Vers.	Ø	bar	kg	€
SERP R 3/8"	CU	3/8"	150	0,20	15,00
SERP R 1/2"	CU	1/2"	150	0,24	16,20

Artic.	Vers.	Ø	bar	kg	€
SERP R Cr 3/8"	CU	3/8"	150	0,20	17,50
SERP R Cr 1/2"	CU	1/2"	150	0,24	18,90

Artic.	Vers.	Ø	bar	kg	€
SERP A 1/4"	ACC	1/4"	150	0,10	15,50
SERP A 3/8"	ACC	3/8"	150	0,20	15,70
SERP A 1/2"	ACC	1/2"	150	0,24	18,60

Artic.	Vers.	Ø	bar	kg	€
SERP A Cr 1/4"	ACC	1/4"	150	0,10	17,00
SERP A Cr 3/8"	ACC	3/8"	150	0,20	18,40
SERP A Cr 1/2"	ACC	1/2"	150	0,24	21,70

Pumps, nozzles, flow-meters or ancillary equipment containing aluminium parts coming into contact with the liquid cannot be used to pump: trichloroetane, methylene chloride, halogenated hydrocarbons: danger of an explosion caused by a chemical reaction.

Before purchasing an article to be used in contact with chemicals, the user shall determinate the suitability of the product for his intended use, and user assumes all risk and liability whatsoever in connection therewith.

**OFFICINA MECCANICA BINDA** declines to assume any responsibility if the pump is used for different applications without prior writing consent.

Capacities and pressures are approximated and refer to the maximum obtainable values for pumps used in standard conditions and at room temperature.

The images shown in the catalogue are indicative, **OFFICINA MECCANICA BINDA** reserves the right to make products improvement without prior notice. For a better identification and information, contact our offices.

**OFFICINA MECCANICA BINDA** reserve the right to change prices without notice.

Products supplied by **OFFICINA MECCANICA BINDA** are guaranteed for 12 months from purchase.

#### GENERAL SAFETY INFORMATION FOR HANDLING FLAMMABLE AND COMBUSTIBLE LIQUIDS.

When using a hand pump to transfer hazardous fluids from barrels to fill cans, drums with flammable or combustible liquids, both the container being pumped from and the container being pumped to, and the manual pump, must be grounded to prevent discharge of sparks of static electricity which could cause explosion.

If you choose electric powered pumps or air driven pumps for the transfer of flammable or explosive fluids use only explosion proof motor pumps, with ATEX standards.

Available Teflon and Viton are a registered trademark and brand name of the E.I. Du Pont de Nemours & Co.

To transfer diesel we suggest to use products with Viton seals.



OFFICINA MECCANICA

**BINDA S.r.l.**

Via Pramergé 4 (Angolo S.S. 342)

22032 Albese con Cassano (CO) – Italy

Tel. 0039/031-200.144 Fax. 0039/031-360.255

[www.bindapompe.com](http://www.bindapompe.com) [info@bindapompe.com](mailto:info@bindapompe.com)