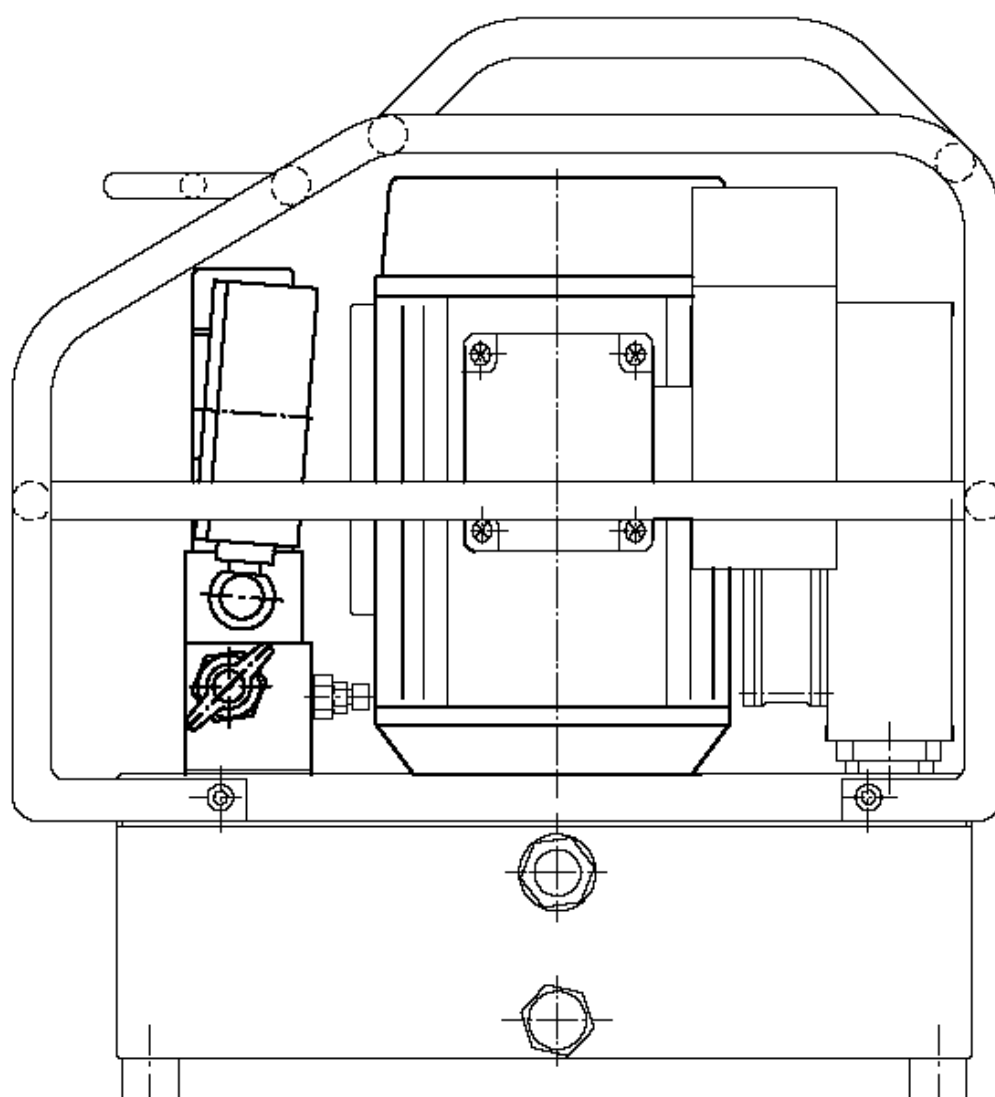
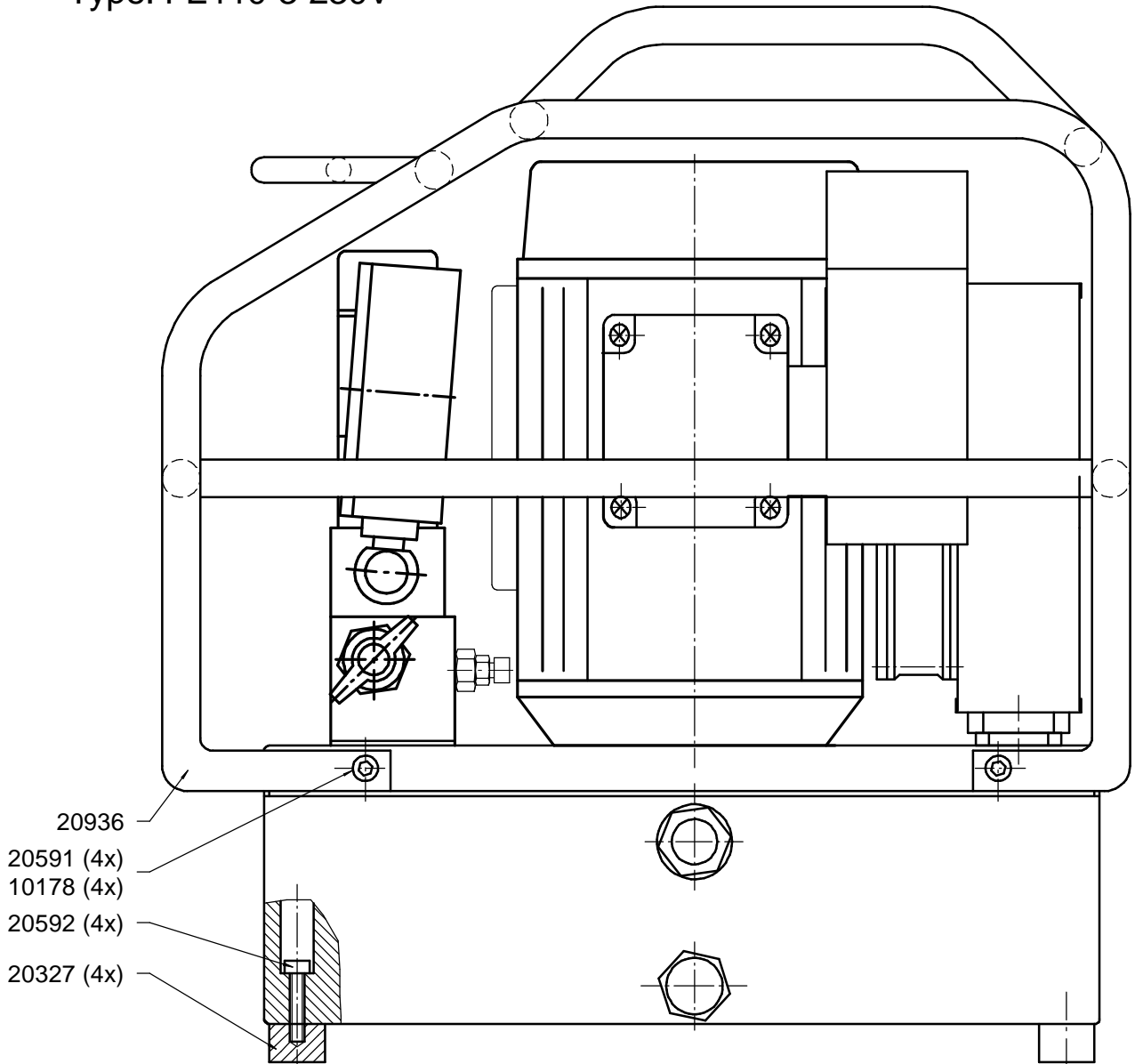


# Spare Parts

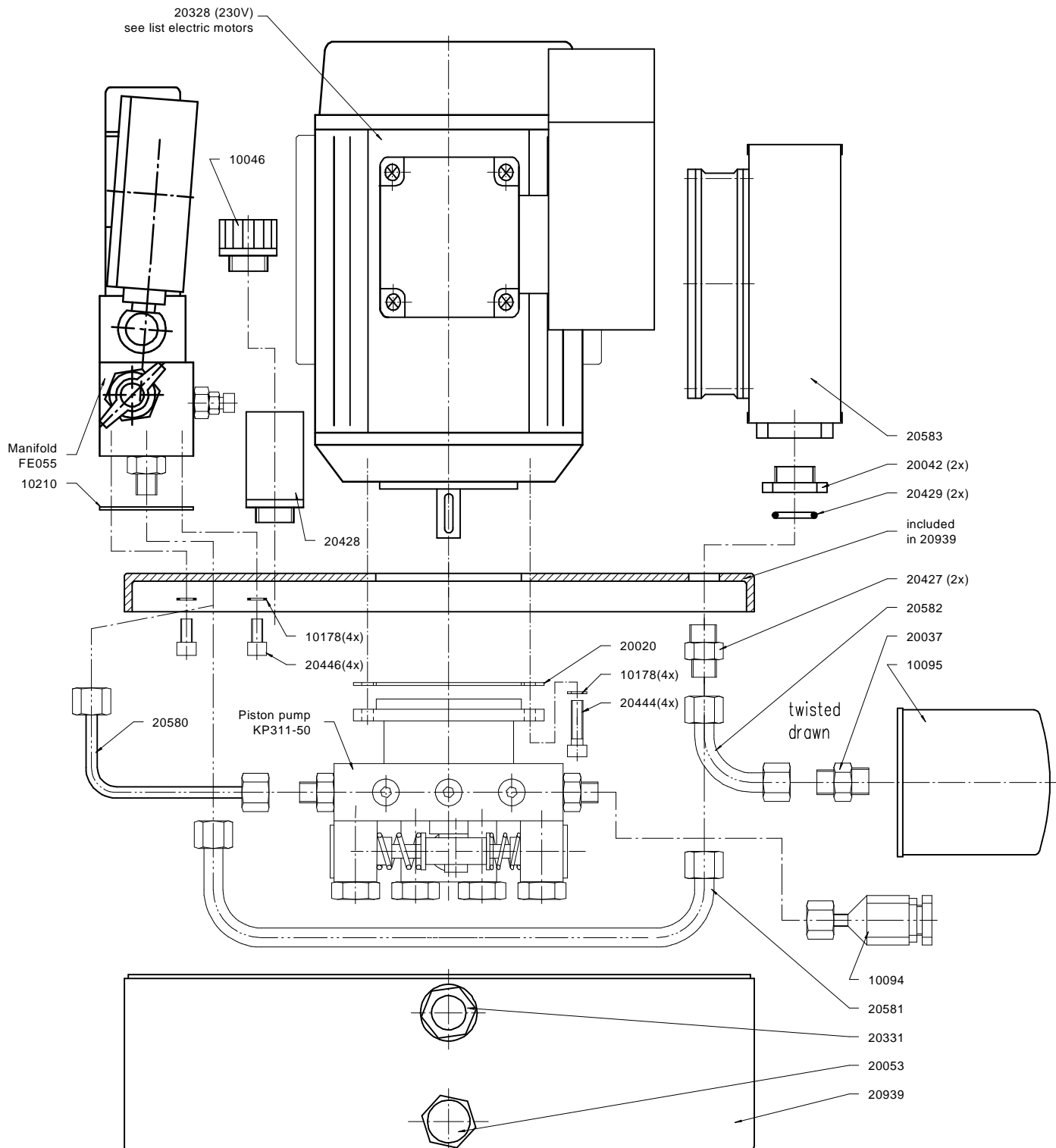
## Hydraulic Pump FE110-3-230V



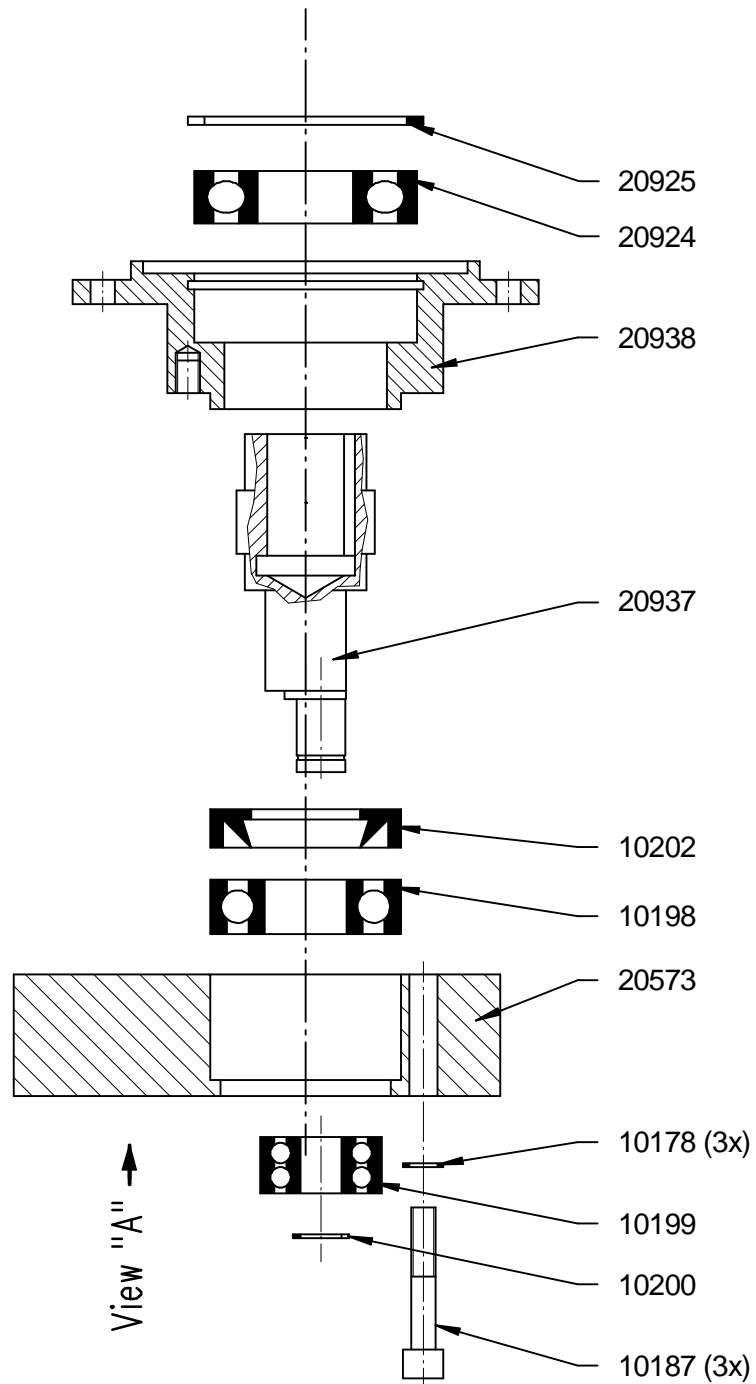
Type: FE110-3-230V



# Hydraulik pump FE110-3-230V "internal"

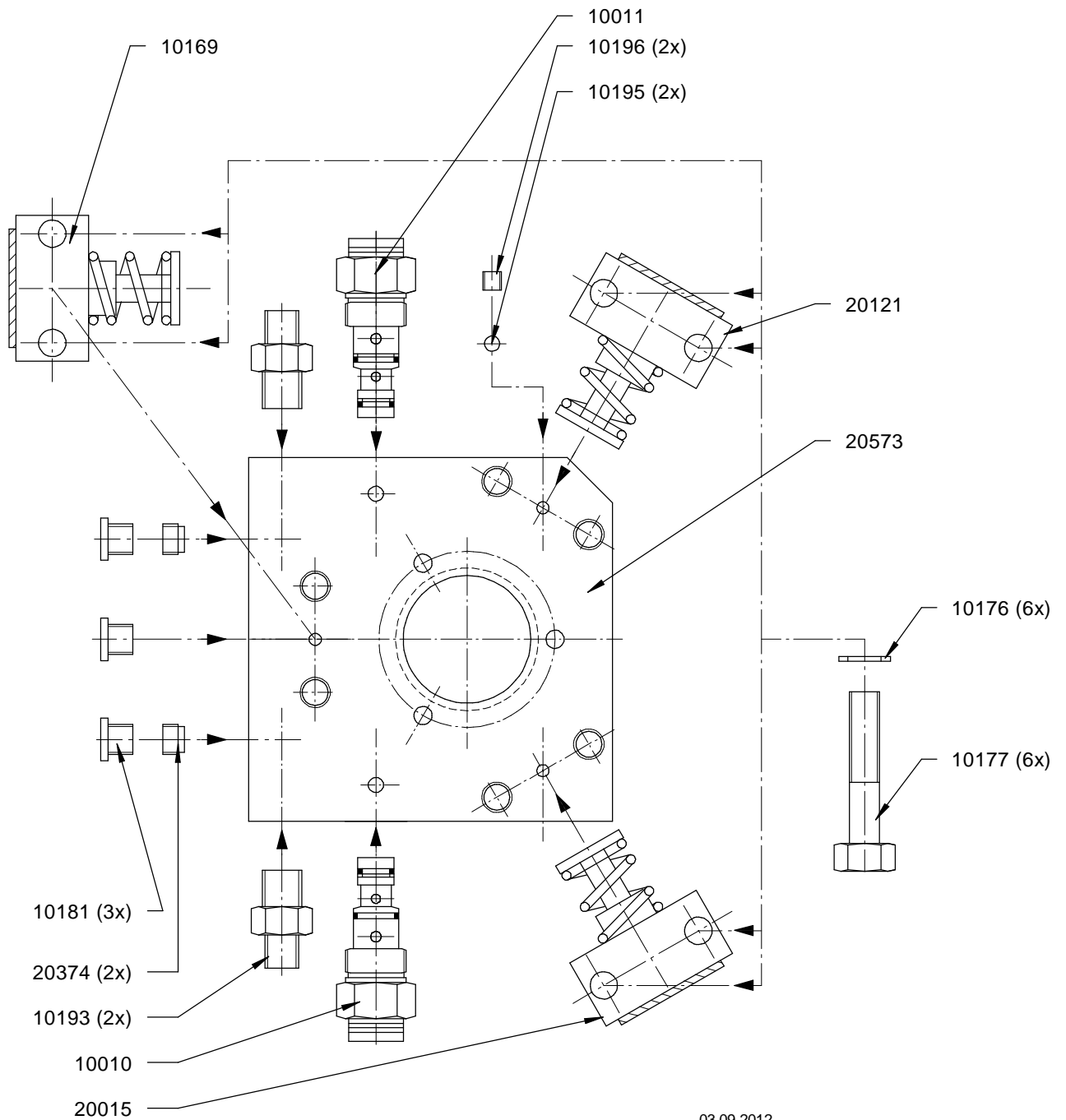


# Piston pump KP311-50



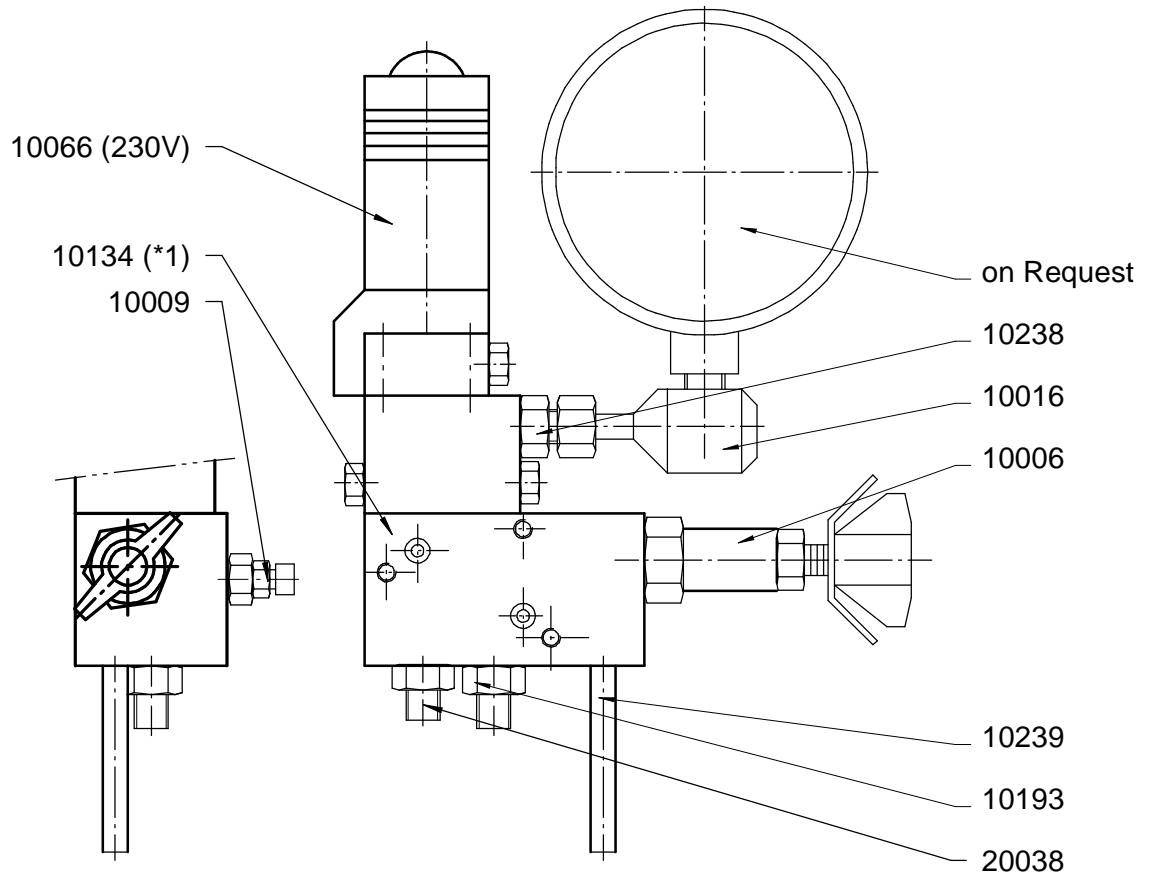
03.09.2012

# Piston pump KP311-50 View "A"

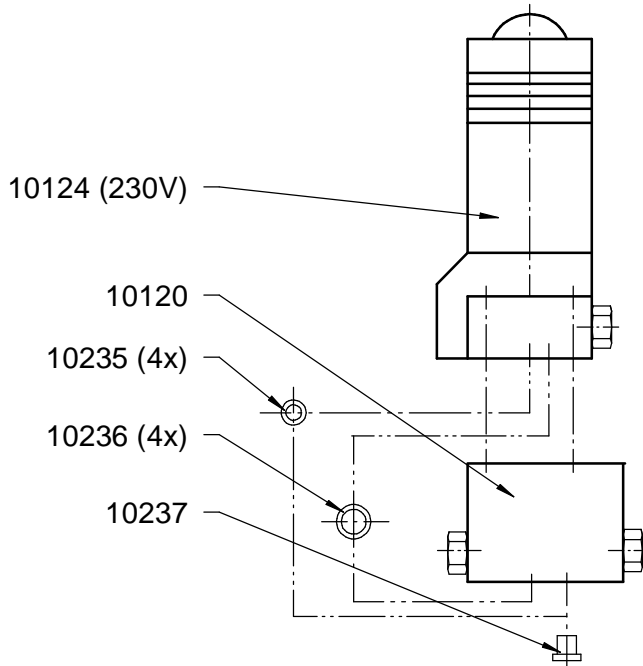


03.09.2012

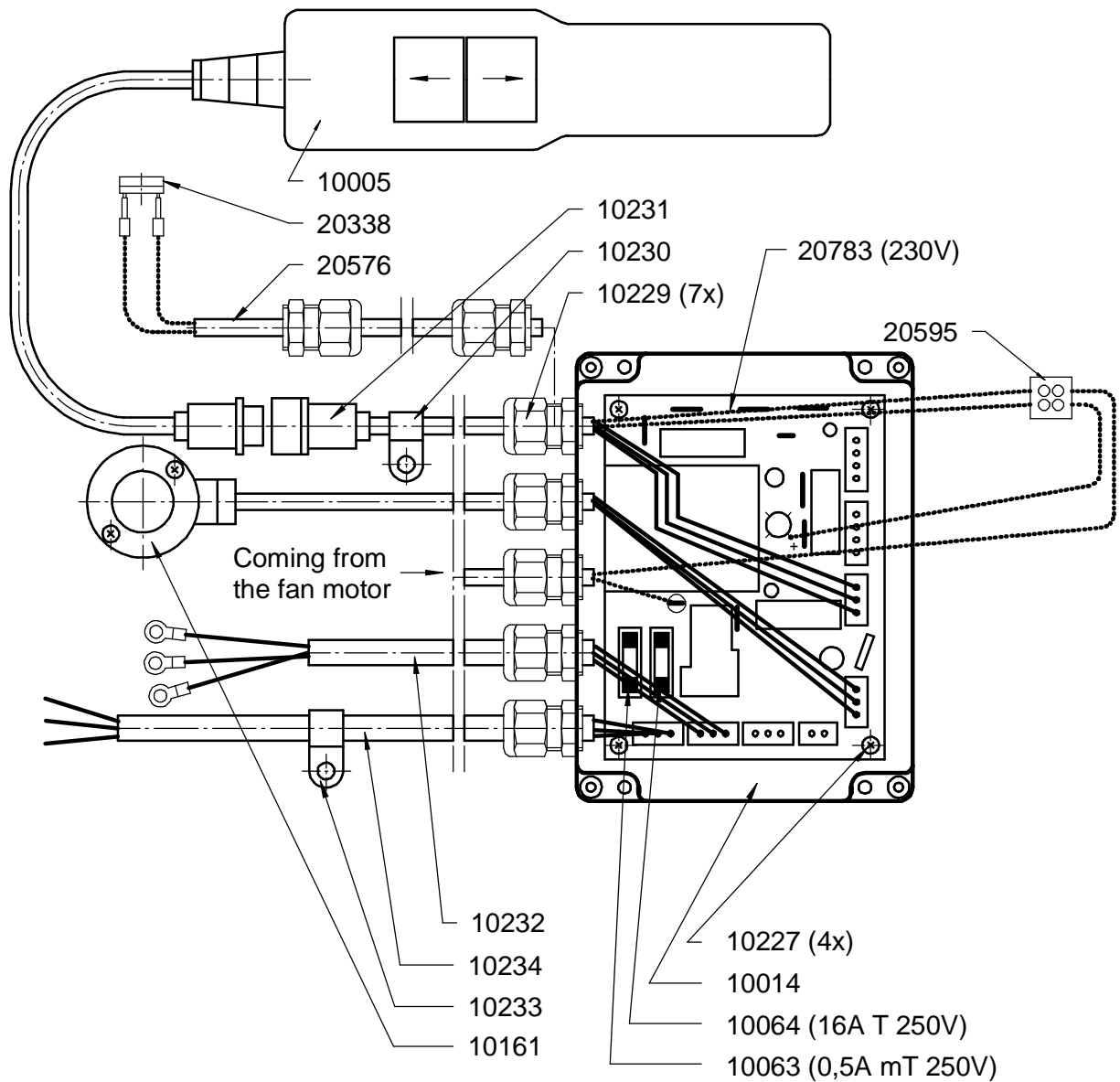
# Manifold FE110-3-230V



\*1 : For direct Coupler connection use 10082



# Electric box FE110-3-230V



# Electric Motors FE-Series

