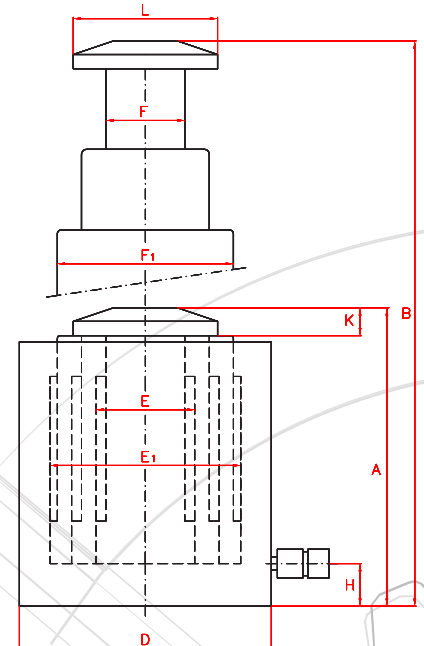


**LARZEP**  
HYDRAULICSL Serisi Tek Etkili Yük Dönüşlü Teleskopik Hidrolik Silindirler  
SL Single Acting Load Return Telescopic Cylinders**30  
Ton**10 tondan 30 tona kadar  
hidrolik silindir modelleriMaksimum 700 bar  
çalışma basıncı135 - 600 mm arası  
stroke boyu seçeneği2-3 kademeli stroke açma  
sistemi standartTek etkili, yük geri dönüşlü  
hidrolik sistemKaliteli ve işahlı çelikten imal  
dayanıklı silindir gövdesi

Kapasite	Model	Toplam Strok	Strok Stroke			Kapasite Capacity			Yağ Hacmi	Ağırlık
Capacity	LARZEP	Total Stroke	1. Kademe 1. Stage	2. Kademe 2. Stage	3. Kademe 3. Stage	1. Kademe 1. Stage	2. Kademe 2. Stage	3. Kademe 3. Stage	Oil Cap.	Weight
Ton	#	mm	mm	mm	mm	Ton	Ton	Ton	cm <sup>3</sup>	kg
10	SL01027	270	135	135	-	30	10	-	810	16.2
10	SL01043	435	145	145	145	65	30	10	2.250	33.4
15	SL01530	300	150	150	-	43	16	-	1.308	23.4
15	SL01550	500	170	170	160	84	46	16	3.543	50.9
30	SL03030	300	150	150	-	65	30	-	2.088	38.3
30	SL03060	600	200	200	200	138	65	30	6.803	96.2

Model	Kapalı Boy (A)	B	D	E	E1	F	F1	H	K	L
LARZEP	mm	mm	mm	mm	mm	mm	mm	mm	mm	mm
SL01027	250	520	110	45	75	36	68	20	16	50
SL01043	280	715	152	45	110	36	95	21	19	75
SL01530	280	580	125	55	90	50	80	25	16	66
SL01550	320	820	175	55	125	50	110	25	19	95
SL03030	304	604	152	75	110	68	100	27	18	89
SL03060	366	966	220	75	160	68	150	27	20	123



Capacity from 10 to 30 Tn, stroke up to 600 mm.

For applications with minimum clearance and high lift required.

Load return. Also available in double acting versions DL.

Also available in aluminium versions: SLA, DLA.