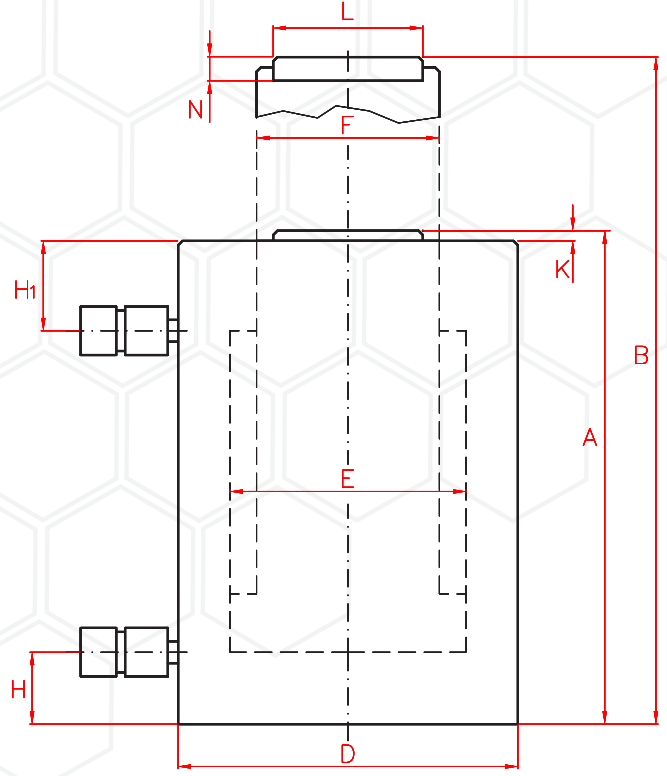


**LARZEP**  
HYDRAULICDDR Serisi Çift Etkili Yüksek Tonajlı Hidrolik Silindirler  
DDR Double Acting High Tonnage Cylinders100 ton üzeri silindirler için  
diğer sayfaya bakınız. →**1100 Ton** 50 tondan 1.100 tona kadar hidrolik silindirler

Çift etkili, gelişmiş, hızlı hidrolik sistem

Maksimum 700 bar çalışma basıncı

Harici emniyet valfi ile maksimum güvenlik

300 mm'ye kadar stroke boyu seçeneği

Kaliteli ve işahlı çelikten imal dayanıklı silindir gövdesi

2.000 tona kadar özel imalat imkanı

Ağır endüstri şartlarına uygun uzun ömürlü

Capacity from 50 to 1.100 Tn, stroke up to 300 mm.

For harsh conditions in both vertical and horizontal positions.

External safety valve to prevent accidental over-pressure.

Optional tilting saddles.

On request, DDR cylinders can be supplied with threads or other special features such as lock nuts, sleeves, etc.

Possibility of up to 2.000 Tn lifting capacity per cylinder.

Kapasite Capacity	Model	Strok Stroke	İtme Kap. Push Cap.	Etki Alanı Effect Area	Yağ Hacmi Oil Cap.	A	B	D	E	F	H	H1	K	L	N	Ağırlık Weight
Ton	LARZEP	mm	kN	cm <sup>2</sup>	cm <sup>3</sup>	mm	mm	mm	mm	mm	mm	mm	mm	mm	mm	kg
50	DDR05005	50	486	71	354	216	266	127	95	80	30	80	6	61	12	20
50	DDR05010	100	486	71	709	266	366	127	95	80	30	80	6	61	12	24
50	DDR05015	150	486	71	1.063	316	466	127	95	80	30	80	6	61	12	28
50	DDR05020	200	486	71	1.418	366	566	127	95	80	30	80	6	61	12	32
50	DDR05025	250	486	71	1.772	416	666	127	95	80	30	80	6	61	12	36
50	DDR05030	300	486	71	2.126	466	766	127	95	80	30	80	6	61	12	40
100	DDR10005	50	911	133	664	196	246	170	130	100	30	60	6	88	14	31
100	DDR10010	100	911	133	1.327	246	346	170	130	100	30	60	6	88	14	39
100	DDR10015	150	911	133	1.991	296	446	170	130	100	30	60	6	88	14	47
100	DDR10020	200	911	133	2.655	346	546	170	130	100	30	60	6	88	14	56
100	DDR10025	250	911	133	3.318	401	651	170	130	100	30	65	6	88	14	65
100	DDR10030	300	911	133	3.982	451	751	170	130	100	30	65	6	88	14	72



DDR Serisi Çift Etkili Yüksek Tonajlı Hidrolik Silindirler  
DDR Double Acting High Tonnage Cylinders

Kapasite Capacity	Model	Strok Stroke	İtme Kap. Push Cap.	Etki Alanı Effect Area	Yağ Hacmi Oil Cap.	A	B	D	E	F	H	H1	K	L	N	Ağırlık Weight
Ton	LARZEP	mm	kN	cm <sup>2</sup>	cm <sup>3</sup>	mm	mm	mm	mm	mm	mm	mm	mm	mm	mm	kg
140	DDR14005	50	1380	201	1.005	201	251	200	160	110	35	60	6	88	14	44
140	DDR14010	100	1380	201	2.011	251	351	200	160	110	35	60	6	88	14	51
140	DDR14015	150	1380	201	3.016	306	456	200	160	110	35	65	6	88	14	59
140	DDR14020	200	1380	201	4.021	356	556	200	160	110	35	65	6	88	14	66
140	DDR14025	250	1380	201	5.027	411	661	200	160	110	35	70	6	88	14	74
140	DDR14030	300	1380	201	6.032	461	761	200	160	110	35	70	6	88	14	81
220	DDR22005	50	2.156	314	1.571	216	266	250	200	140	40	70	6	111	15	75
220	DDR22010	100	2.156	314	3.142	266	366	250	200	140	40	70	6	111	15	86
220	DDR22015	150	2.156	314	4.712	326	476	250	200	140	40	75	6	111	15	101
220	DDR22020	200	2.156	314	6.283	376	576	250	200	140	40	75	6	111	15	112
220	DDR22025	250	2.156	314	7.854	436	686	250	200	140	40	80	6	111	15	127
220	DDR22030	300	2.156	314	9.425	486	786	250	200	140	40	80	6	111	15	139
350	DDR35005	50	3370	491	2.454	236	286	310	250	200	50	80	6	178	23	127
350	DDR35010	100	3370	491	4.909	286	386	310	250	200	50	80	6	178	23	148
350	DDR35015	150	3370	491	7.363	341	491	310	250	200	50	80	6	178	23	175
350	DDR35020	200	3370	491	9.817	391	591	310	250	200	50	80	6	178	23	195
350	DDR35025	250	3370	491	12.272	451	701	310	250	200	50	85	6	178	23	222
350	DDR35030	300	3370	491	14.726	501	801	310	250	200	50	85	6	178	23	243
430	DDR43005	50	4.224	616	3.079	248	298	340	280	220	55	85	8	178	23	164
430	DDR43010	100	4.224	616	6.158	298	398	340	280	220	55	85	8	178	23	188
430	DDR43015	150	4.224	616	9.236	353	503	340	280	220	55	85	8	178	23	215
430	DDR43020	200	4.224	616	12.315	403	603	340	280	220	55	85	8	178	23	239
430	DDR43025	250	4.224	616	15.394	458	708	340	280	220	55	85	8	178	23	266
430	DDR43030	300	4.224	616	18.473	508	808	340	280	220	55	85	8	178	23	290
560	DDR56005	50	5.521	804	4.021	268	318	390	320	250	65	90	8	200	27	234
560	DDR56010	100	5.521	804	8.042	318	418	390	320	250	65	90	8	200	27	266
560	DDR56015	150	5.521	804	12.064	373	523	390	320	250	65	90	8	200	27	301
560	DDR56020	200	5.521	804	16.085	423	623	390	320	250	65	90	8	200	27	332
560	DDR56025	250	5.521	804	20.106	488	738	390	320	250	65	100	8	200	27	377
560	DDR56030	300	5.521	804	24.127	538	838	390	320	250	65	100	8	200	27	408
670	DDR67005	50	6600	962	4.811	293	343	430	350	280	65	105	8	200	27	315
670	DDR67010	100	6600	962	9.621	343	443	430	350	280	65	105	8	200	27	355
670	DDR67015	150	6600	962	14.432	398	548	430	350	280	65	105	8	200	27	400
670	DDR67020	200	6600	962	19.242	448	648	430	350	280	65	105	8	200	27	439
670	DDR67025	250	6600	962	24.053	508	758	430	350	280	65	105	8	200	27	490
670	DDR67030	300	6600	962	28.863	558	858	430	350	280	65	105	8	200	27	530
880	DDR88005	50	8.626	1.257	6.283	310	360	490	400	320	70	115	10	250	35	434
880	DDR88010	100	8.626	1.257	12.566	360	460	490	400	320	70	115	10	250	35	485
880	DDR88015	150	8.626	1.257	18.850	420	570	490	400	320	70	115	10	250	35	551
880	DDR88020	200	8.626	1.257	25.133	470	670	490	400	320	70	115	10	250	35	602
880	DDR88025	250	8.626	1.257	31.416	530	780	490	400	320	70	115	10	250	35	668
880	DDR88030	300	8.626	1.257	37.699	580	880	490	400	320	70	115	10	250	35	719
1100	DDR110005	50	10.921	1590	7.952	330	380	550	450	360	80	125	10	325	55	578
1100	DDR110010	100	10.921	1590	15.904	380	480	550	450	360	80	125	10	325	55	648
1100	DDR110015	150	10.921	1590	23.856	440	590	550	450	360	80	125	10	325	55	731
1100	DDR110020	200	10.921	1590	31.809	490	690	550	450	360	80	125	10	325	55	795
1100	DDR110025	250	10.921	1590	39.761	550	800	550	450	360	80	125	10	325	55	878
1100	DDR110030	300	10.921	1590	47.713	600	900	550	450	360	80	125	10	325	55	943