

# Ersatzteilliste

## Hydraulikaggregat



(D) 1 - 5

(GB) 7 - 11

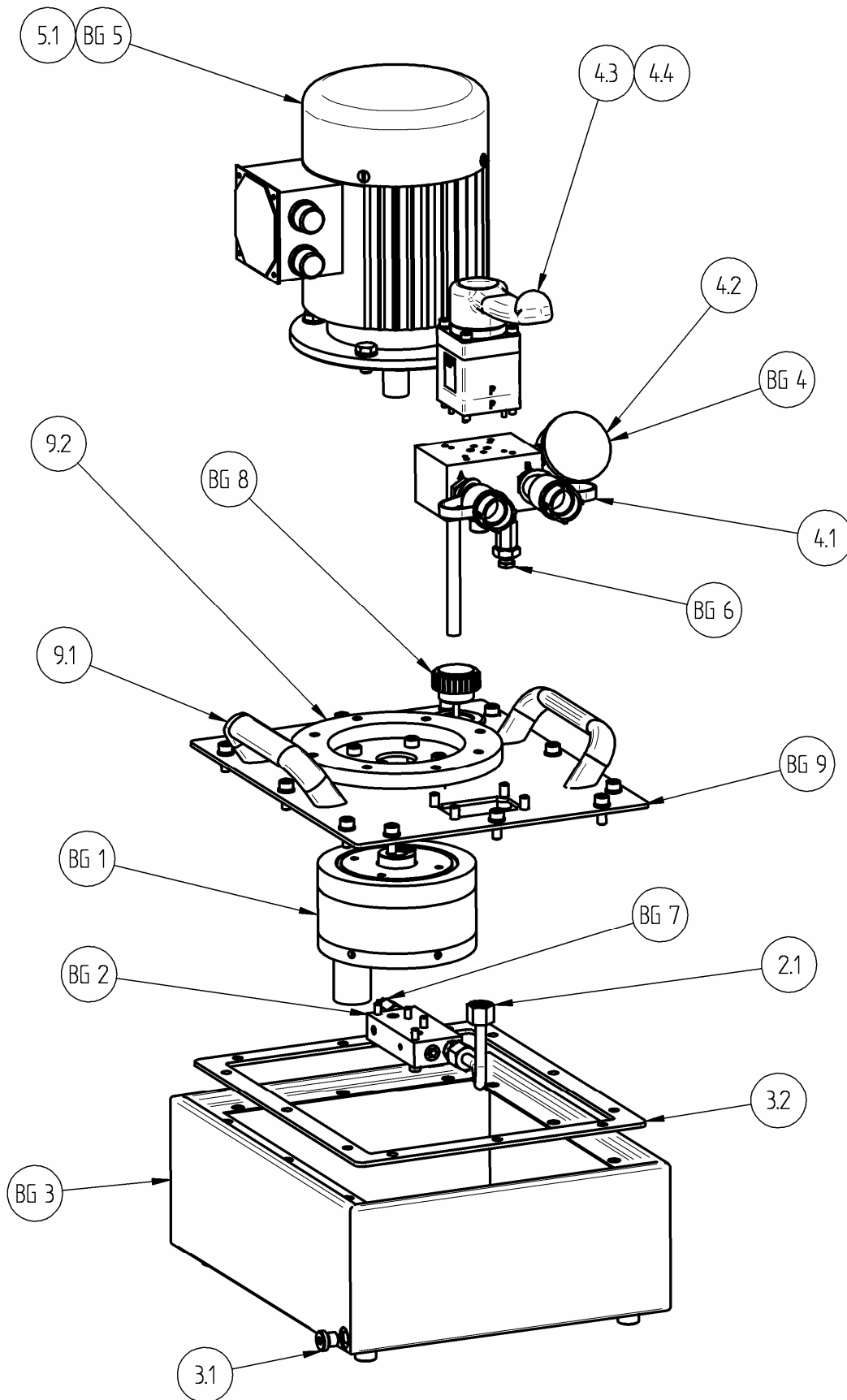
Ausgabe 05.08



- WAE-1** → Hydraulikaggregat 230 V mit 4/3 Handschiebeventil
- WAE-2** → Hydraulikaggregat 230 V mit 4/3 elekt. Wegesitzventil
- WAE-3** → Hydraulikaggregat 400 V mit 4/3 Handschiebeventil
- WAE-4** → Hydraulikaggregat 400 V mit 4/3 elekt. Wegesitzventil
- WAB-1** → Hydraulikaggregat Benzin mit 4/3 Handschiebeventil



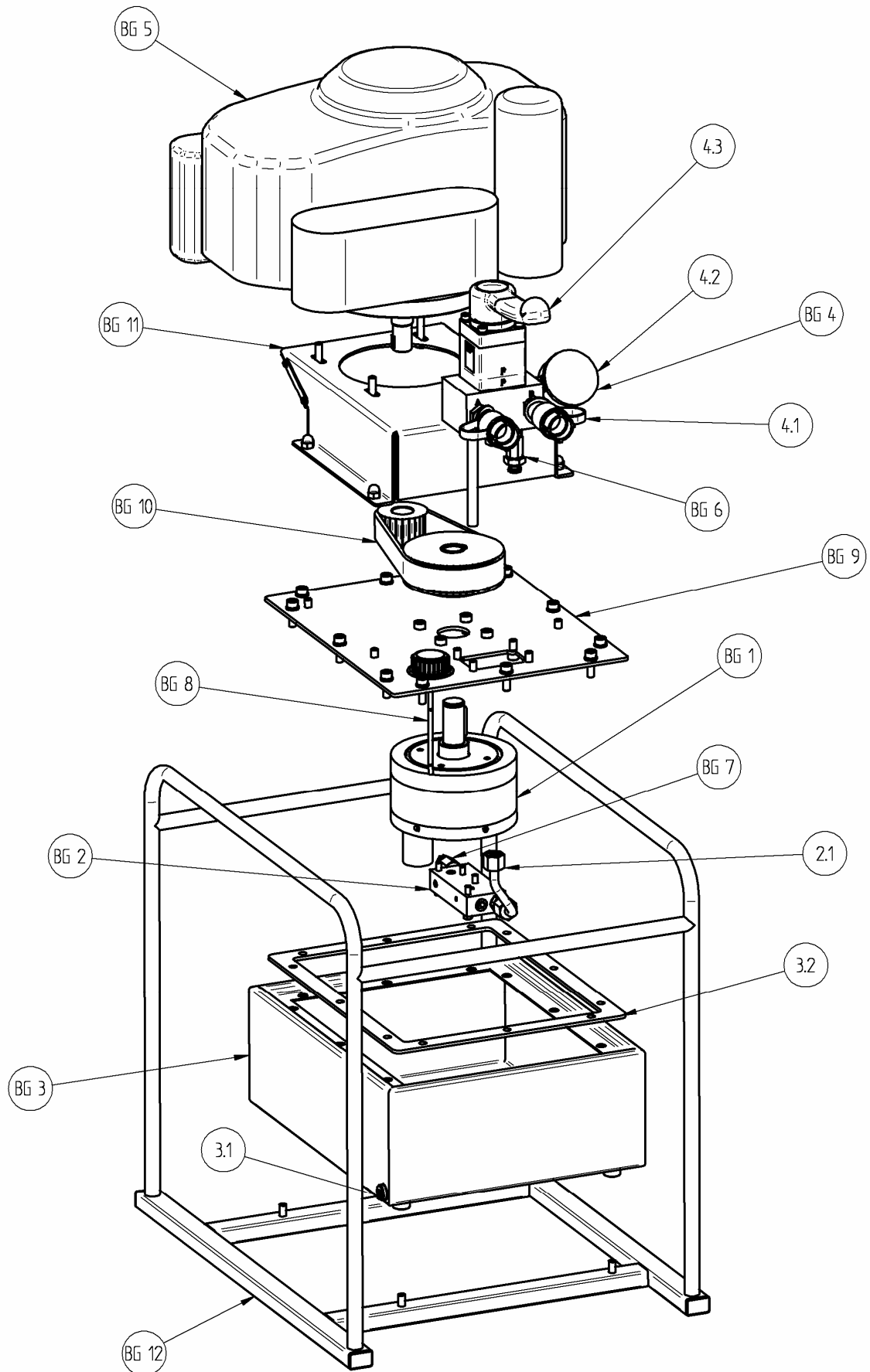
# 1 Aggregat WAE-1 – WAE-4 (230V und 400V / Handventil und Elektroventil)



**2     Aggregat WAE-1 – WAE-4 (230V und 400V / Handventil und Elektroventil)**

<b>Teil</b>	<b>Benennung</b>	<b>Stck.</b>	<b>Bemerkung</b>
BG 1	Pumpenkörper	1	komplett
BG 2	Umschaltventil	1	komplett
2.1	Hydraulikrohr	1	komplett
BG 3	Hydrauliktank	1	Hydrauliktank
3.1	Ölablassschraube	1	
3.2	Tankdichtung	1	
BG 4	Ventilanschlussblock	1	komplett mit Ventil
4.1	Schraubkupplungen	2	G 3/8"; 700 bar
4.2	Manometer	1	700 bar
4.3	Wegeventil	1	Handventil
4.4	Wegeventil	1	Elektroventil komplett
BG 5	Elektro Motor	1	230 V komplett
5.1	Elektro Motor	1	400 V komplett
BG 6	Hochdruckventil	1	komplett
BG 7	Niederdruckventil	1	komplett
BG 8	Ölmessstab	1	
BG 9	Tankdeckel	1	komplett
9.1	Tragegriff	2	komplett
9.2	Motordistanzring	1	komplett

### 3 **Aggregat WAB-1 (Benzin / Handventil)**



#### 4 Aggregat WAB-1 (Benzin / Handventil)

Teil	Benennung	Stck.	Bemerkung
BG 1	Pumpenkörper	1	komplett mit BM - Welle
BG 2	Umschaltventil	1	komplett
2.1	Hydraulikrohr	1	komplett
BG 3	Hydrauliktank	1	Hydrauliktank
3.1	Ölablassschraube	1	
3.2	Tankdichtung	1	
BG 4	Ventilanschlussblock	1	komplett mit Ventil
4.1	Schraubkupplungen	2	G 3/8"; 700 bar
4.2	Manometer	1	700 bar
4.3	Wegeventil	1	Handventil
BG 5	Motor	1	Benzin komplett
BG 6	Hochdruckventil	1	komplett
BG 7	Niederdruckventil	1	komplett
BG 8	Ölmesstab	1	
BG 9	Tankdeckel	1	komplett
BG 10	Antriebsstrang	1	komplett
BG 11	Motorträgerblech	1	komplett
BG 12	Tragerahmen	1	komplett



## Spare parts list

Hydraulic power unit



(D) 1 - 5

(GB) 7 - 11

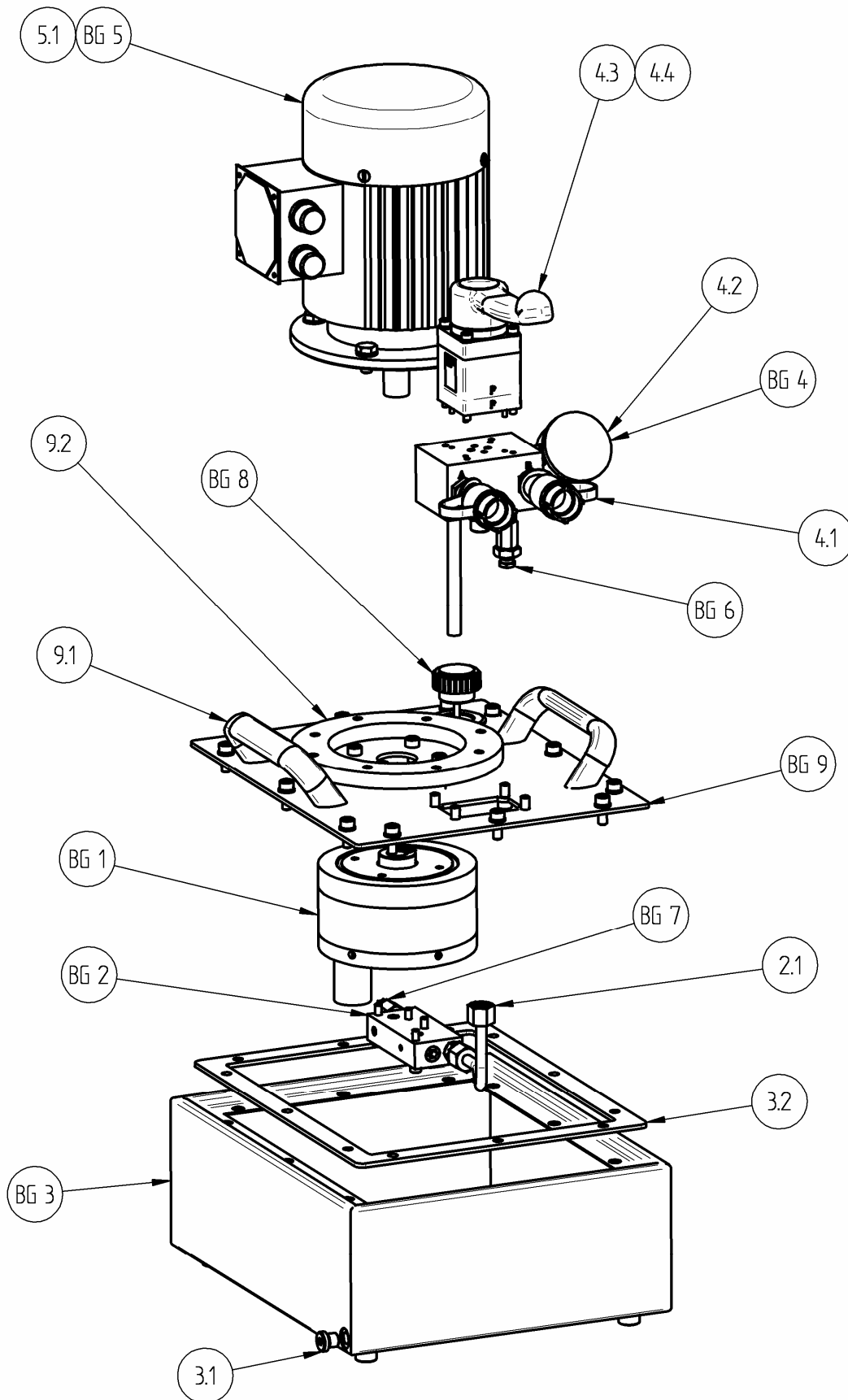
Issue 05.08



- WAE-1** → electro hydraulic unit 230 V with 4/3 manual slide valve
- WAE-2** → electro hydraulic unit 230 V with 4/3 directional seated valve
- WAE-3** → electro hydraulic unit 400 V with 4/3 manual slide valve
- WAE-4** → electro hydraulic unit 400 V with 4/3 directional seated valve
- WAB-1** → fuel hydraulic unit with 4/3 manual slide valve



**5 Electro hydraulic unit WAE-1 – WAE-4**  
**(230V and 400V / manual slide valve and directional seated valve)**

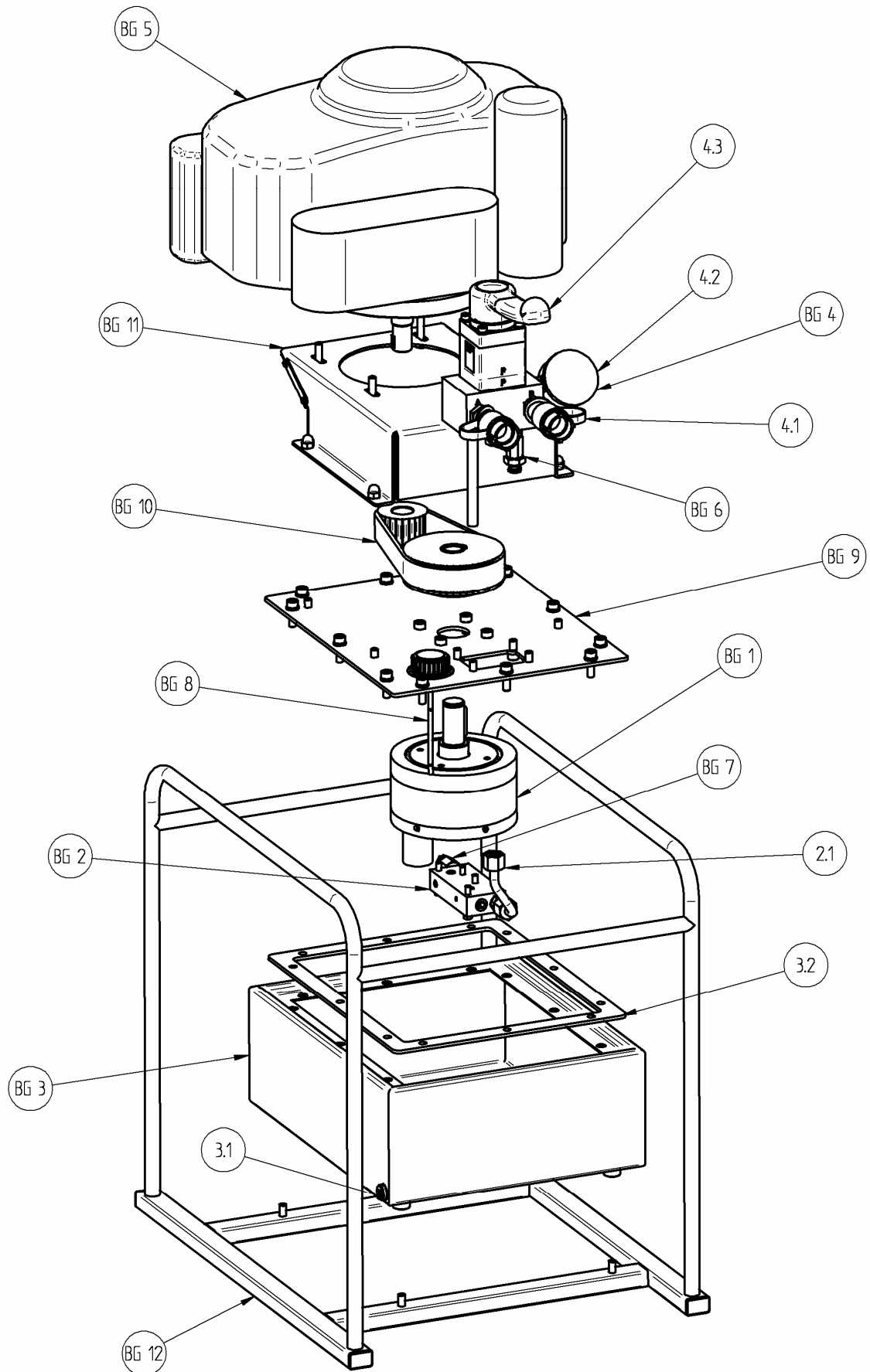




**6 Electro hydraulic unit WAE-1 – WAE-4**  
*(230V and 400V / manual slide valve and directional seated valve)*

<b>part</b>	<b>description</b>	<b>units</b>	<b>comment</b>
BG 1	pump body	1	complete
BG 2	switch valve	1	complete
2.1	hydraulic pipe	1	complete
BG 3	hydraulic tank	1	complete
3.1	oil drain screw	1	
3.2	tank packing	1	
BG 4	valve terminal block	1	complete with valve
4.1	threaded coupling	2	G 3/8"; 700 bar
4.2	manometer	1	700 bar
4.3	4/3 gate valve	1	manual slide valve
4.4	4/3 gate valve	1	directional seated valve
BG 5	electric motor	1	230 V complete
5.1	electric motor	1	400 V complete
BG 6	HP valve	1	complete
BG 7	LP valve	1	complete
BG 8	dipstick	1	
BG 9	tank cap	1	complete
9.1	carrier handle	2	complete
9.2	motor distance ring	1	complete

## 7 Fuel hdyraulic unit WAB-1 (manual slide valve)



**8 Fuel hydraulic unit WAB-1 (manual slide valve)**

<b>part</b>	<b>description</b>	<b>units</b>	<b>comment</b>
BG 1	pump body	1	complete with GM - spindle
BG 2	switch valve	1	complete
2.1	hydraulic pipe	1	complete
BG 3	hydraulic tank	1	complete
3.1	oil drain screw	1	
3.2	tank packing	1	
BG 4	valve terminal block	1	complete with valve
4.1	threaded coupling	2	G 3/8"; 700 bar
4.2	manometer	1	700 bar
4.3	4/3 gate valve	1	manual slide valve
BG 5	gasoline motor	1	complete
BG 6	HP valve	1	complete
BG 7	LP valve	1	complete
BG 8	dipstick	1	
BG 9	tank cap	1	complete
BG 10	drive section	1	complete
BG 11	motor bracket plate	1	complete
BG 12	support frame	1	complete

