

H Series

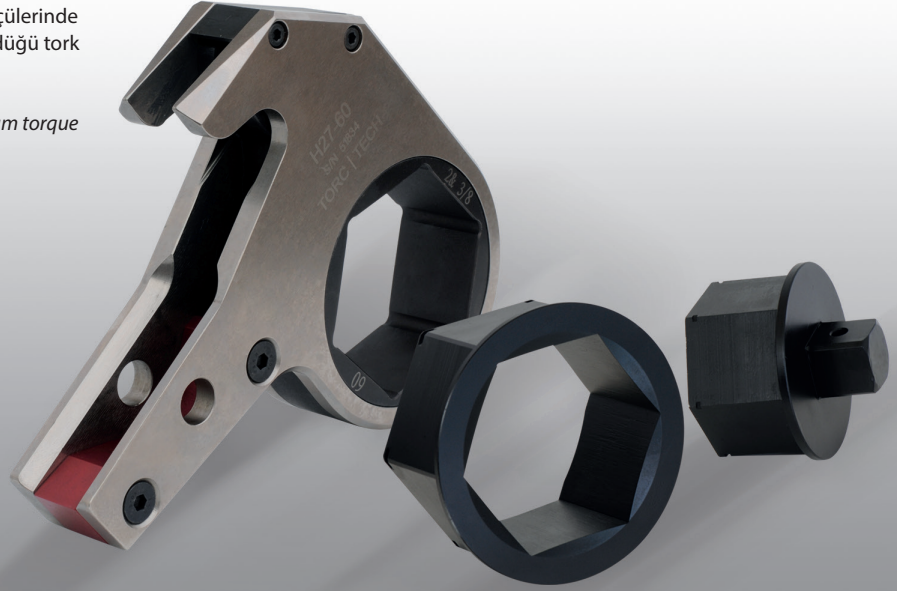
H Serisi Hidrolik Tork Anahtarları Kaset Seçenekleri
Interchangeable Cassette Cartridges for Cassette Drive

LOW serisi kasetli hidrolik tork anahtarları bütün somun ölçülerinde kaset seçeneğine sahiptir. Her model kapasitesinin öngördüğü tork değerlerine göre anahtar ağız kaset ölçüsünü sunar.

All removable cartridges of LOW are designed for the maximum torque of each drive cylinder.

Hexagon Cassette Reducers

Torc-Tech hex reducers are available in any size.



H27					H54					H120					H210					H410				
Tip Type	Hex. Size (mm)	R (mm)	A (mm)	Tork Tonque (Max) (Nm)	Tip tiype	Hex. Size (mm)	R (mm)	A (mm)	Tork Tonque (Max) (Nm)	Tip tiype	Hex. Size (mm)	R (mm)	A (mm)	Tork Tonque (Max) (Nm)	Tip tiype	Hex. Size (mm)	R (mm)	A (mm)	Tork Tonque (Max) (Nm)	Tip tiype	Hex. Size (mm)	R (mm)	A (mm)	Tork Tonque (Max) (Nm)
H27-19	19	26	15	2.625	H54-27	27	35	19	5.370	H120-50	50	44	15	11.700	H210-70	70	59	18	21.200	H430-80	80	72	25	43.790
H27-22	22	26	14	2.625	H54-30	30	35	17	5.370	H120-55	55	47	15	11.700	H210-75	75	62	18	21.200	H430-85	85	78	28	43.790
H27-27	27	26	11	2.625	H54-32	32	35	16	5.370	H120-60	60	50	15	11.700	H210-80	80	65	18	21.200	H430-90	90	78	25	43.790
H27-30	30	28	11	2.625	H54-34	34	35	16	5.370	H120-65	65	53	15	11.700	H210-85	85	68	21	21.200	H430-95	95	84	28	43.790
H27-32	32	28	10	2.625	H54-36	36	35	14	5.370	H120-70	70	56	15	11.700	H210-90	90	71	18	21.200	H430-100	100	84	26	43.790
H27-34	34	31	11	2.625	H54-41	41	35	11	5.370	H120-75	75	58	15	11.700	H210-95	95	77	21	21.200	H430-105	105	90	28	43.790
H27-36	36	31	10	2.625	H54-46	46	37	11	5.370	H120-80	80	61	15	11.700	H210-100	100	77	18	21.200	H430-110	110	94	31	43.790
H27-41	41	34	10	2.625	H54-50	50	41	12	5.370	H120-85	85	66	16	14.350	H210-105	105	79	18	23.100	H430-115	115	94	28	43.790
H27-46	46	37	10	2.625	H54-55	55	44	13	5.370	H120-90	90	69	16	14.350	H210-110	110	87	24	23.100	H430-117	117	94	28	43.790
H27-50	50	40	11	3.068	H54-60	60	47	12	5.370	H120-95	95	71	16	14.350	H210-115	115	87	21	23.100	H430-120	120	101	31	48.480
H27-55	55	42	11	3.068	H54-65	65	50	12	5.370	H120-100	100	77	22	14.350						H430-125	125	101	28	48.480
H27-60	60	5	10	3.068	H54-70	70	52	12	6.030	H120-105	105	77	19	14.350						H430-130	130	101	25	48.480
					H54-75	75	56	12	6.030	H54-75	75	56	12	6.030						H430-135	135	105	26	48.480
					H54-80	80	58	12	6.030	H54-80	80	58	12	6.030						H430-140	140	110	29	48.480
																				H430-145	145	110	26	48.480
																				H430-150	150	115	29	48.480
																				H430-155	155	115	26	48.480
																				H430-160	160	121	29	48.480
																				H430-165	165	121	26	48.480
																				H430-170	170	128	30	48.480
																				H430-175	175	128	27	48.480