


THE "CLASSIC WORKSHOP TOOL", 5000 CLT, EASY TO READ, 20–320 Nm

- ✓ Click-Lens-Type (CLT) with value readout in the display – security for the user
- ✓ **Release accuracy** (in direction of actuation) $\pm 4\%$ of the scale value according to DIN EN ISO 6789:2003 (D)
- ✓ Torque release – palpable by close gap release – audible by click-sound
- ✓  **Made in Germany**

Ergonomically shaped handle with collar **reduces the risk of slipping and injury**

Safe locking at the handle

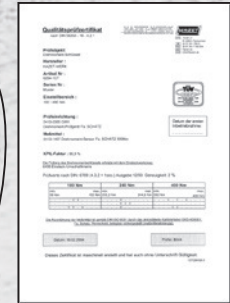
Safe and fast setting of the desired torque value by turning the handle

Hard chrome-plated steel tube – **slim**, but very robust and wear-resistant

Tested with certificate

Integrated shift lever with free running function for $\frac{1}{2}$ model **reduces the risk of injury and malfunction**

User-friendly reversible ratchet
Service friendly (do-it-yourself repair kits for ratchets available)
 Square solid to the sliding ratchet – no risk of loss



With serial number and certificate

Awarded with the



Click-Lens-Type (CLT)

Safe and precise adjustment of the desired release torque. Optimal and easy reading of the torque value

Three large digits for an easy-to-read torque setting

Large convex display (exchangeable) optimises the readability



– Safe in safe box with display window! –

12⁵ 1/2"

20 – 120 Nm · 5121-2 CLT

Made in Germany



■	Nm	Graduation Nm	Release accuracy			l mm	a mm	b mm
				Min	Max			
12.5 1/2	20-120	1	± 4 %	5.9	37.0	435	19.6	44

40 – 200 Nm · 5122-2 CLT

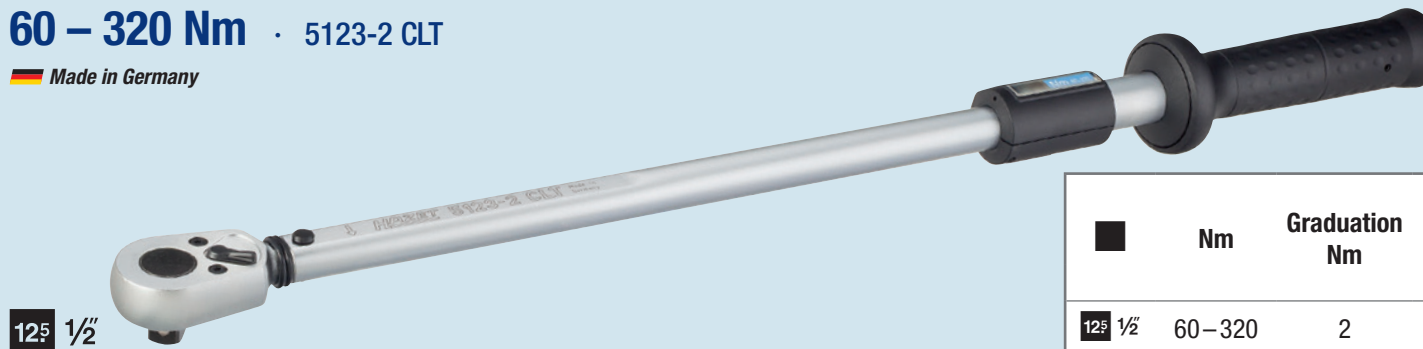
Made in Germany



■	Nm	Graduation Nm	Release accuracy			l mm	a mm	b mm
				Min	Max			
12.5 1/2	40-200	1	± 4 %	9.0	47.4	545	19.6	44

60 – 320 Nm · 5123-2 CLT

Made in Germany



■	Nm	Graduation Nm	Release accuracy			l mm	a mm	b mm
				Min	Max			
12.5 1/2	60-320	2	± 4 %	10.8	59.4	660	19.6	44